



Trusted in New Zealand Since 1982

INSTALLATION GUIDE

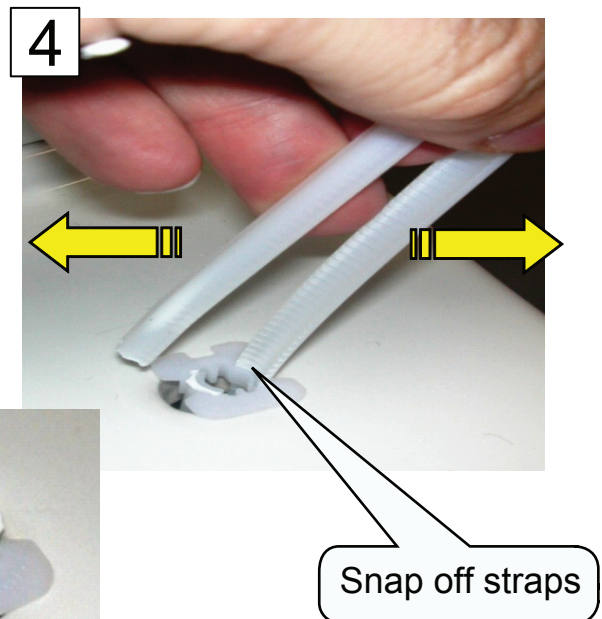
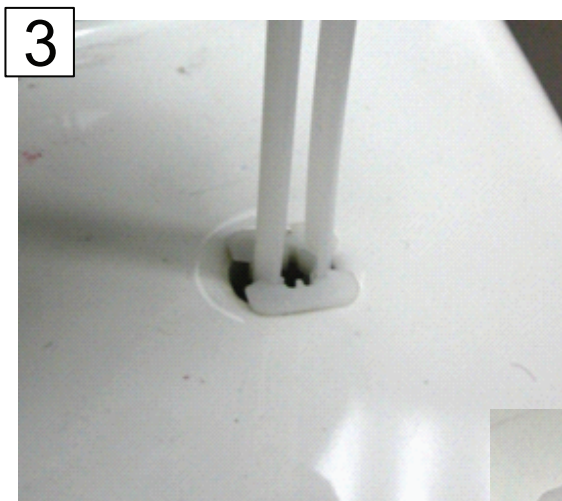
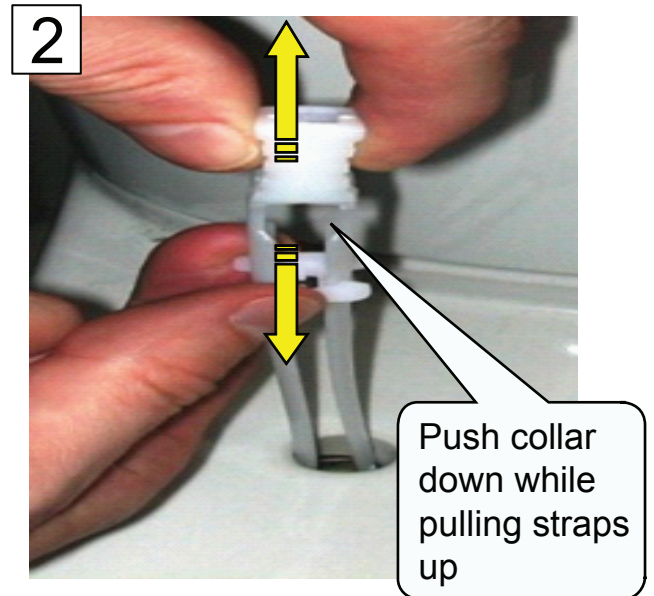
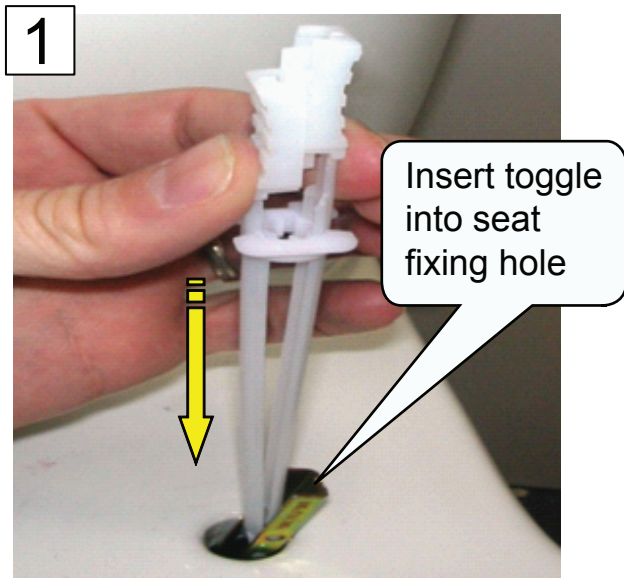
ENGLEFIELD TOILET SEAT QUIET CLOSE WITH METAL HINGE

Related Products: 98218A - Milano, 98219A - Tuscano

Thank you for choosing Englefield. We appreciate your commitment to Englefield quality. Please take a few minutes to review this guide before you start installation. If you encounter any installation or performance problems, please don't hesitate to contact us. All information in this manual is based upon the latest

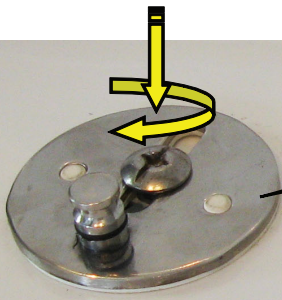
product information available at the time of publication. We constantly strive to improve the quality of our products. We reserve the right to make changes in product characteristics, packaging or availability at any time without notice. Thanks again for choosing Englefield.

INSTALLATION

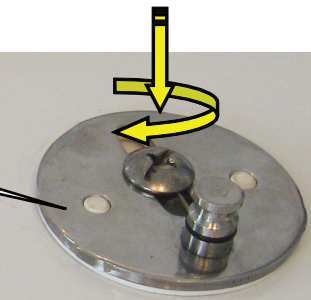


INSTALLATION

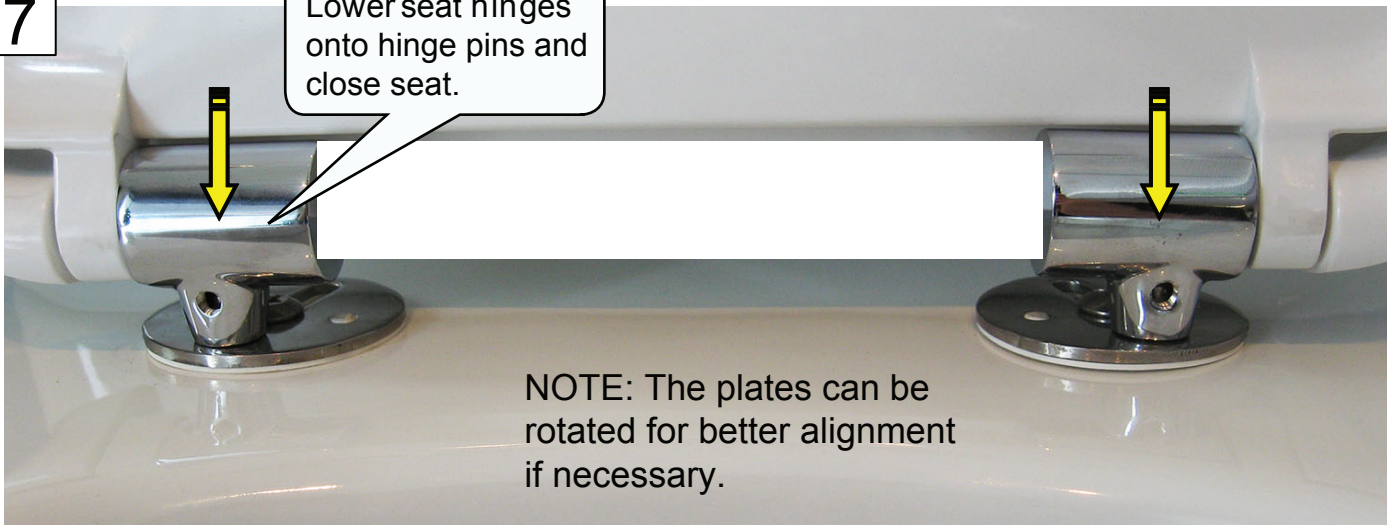
6



Loosely bolt the hinge plates and rubber pads to the toggles.



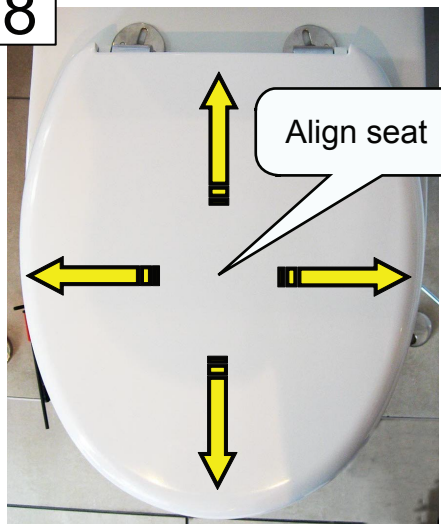
7



Lower seat hinges onto hinge pins and close seat.

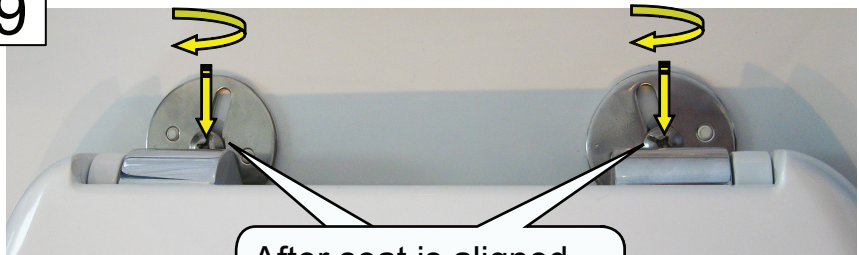
NOTE: The plates can be rotated for better alignment if necessary.

8



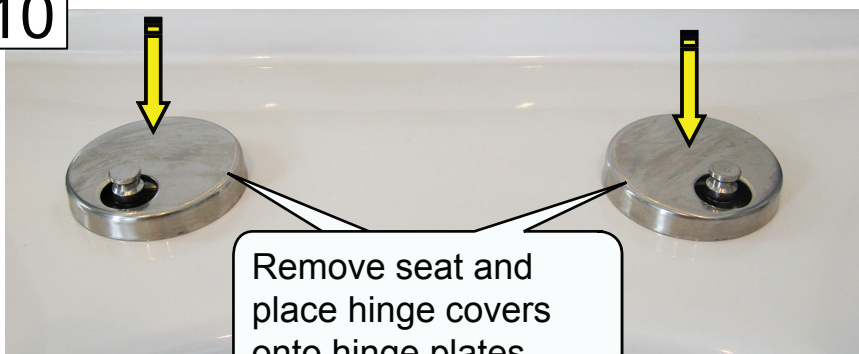
Align seat

9



After seat is aligned, tighten bolts to lock plates in position.

10

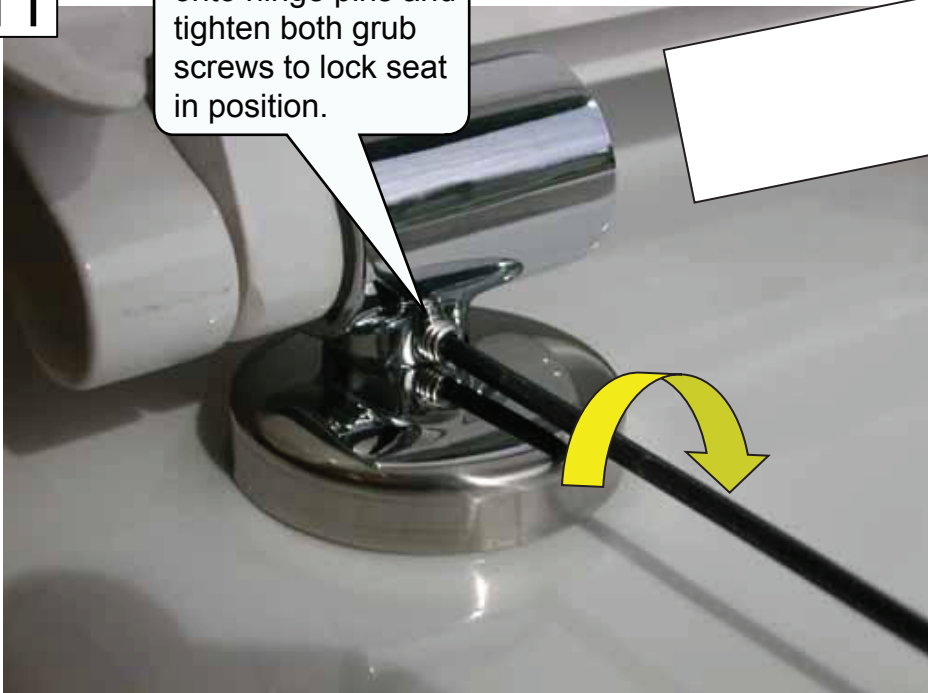


Remove seat and place hinge covers onto hinge plates.

INSTALLATION

11

Place seat back onto hinge pins and tighten both grub screws to lock seat in position.



Remove polystyrene block from hinges.

USER INFORMATION

SOFT CLOSE OPERATION

To softly close the seat start to lower the seat then release. It will softly close by itself.

