

# INSTALLATION INSTRUCTIONS

FURNITURE | VALENCIA® SLIM VANITY



## BEFORE YOU BEGIN:

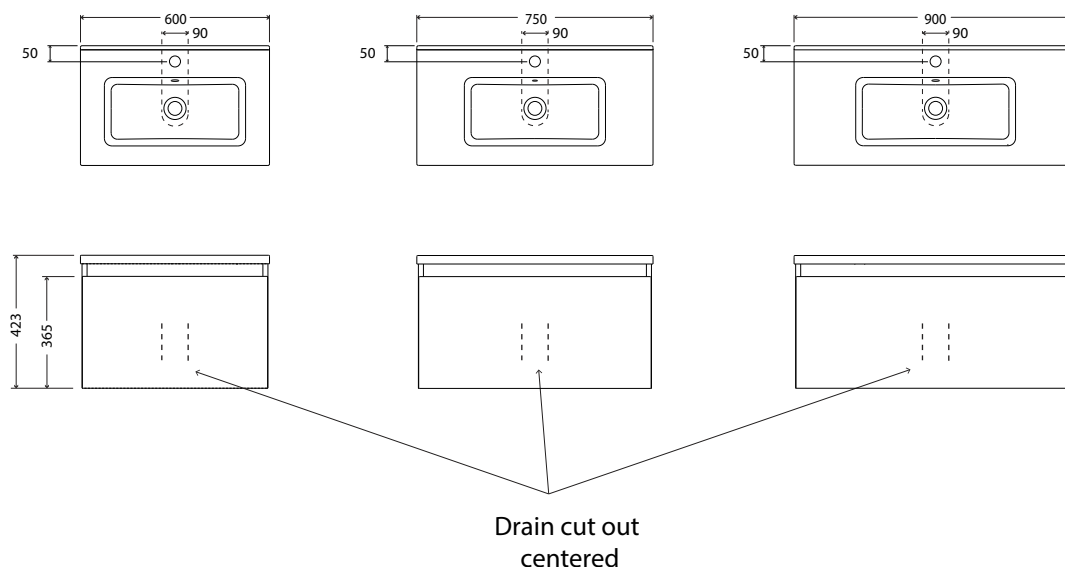
Please read these instructions carefully to familiarise yourself with the required tools, materials, and installation sequences. Follow the sections that pertain to your particular installation. This will help you avoid costly mistakes. In addition to proper installation, read all operating and safety instructions.

Prior to installation, inspect cabinet and top to ensure that no damage has occurred in transit. If damage has occurred, or a visible defect exists, do not proceed with installation, and advise your supplier immediately.

**Instructions, drawings, and diagrams contained in this manual present information available at the time of printing.**  
**Although every attempt has been made to keep them up-to-date, Englefield reserves the right to implement product changes without further notice.**

**Please leave these instructions for the consumer. They contain important information.**

## ROUGH-IN:

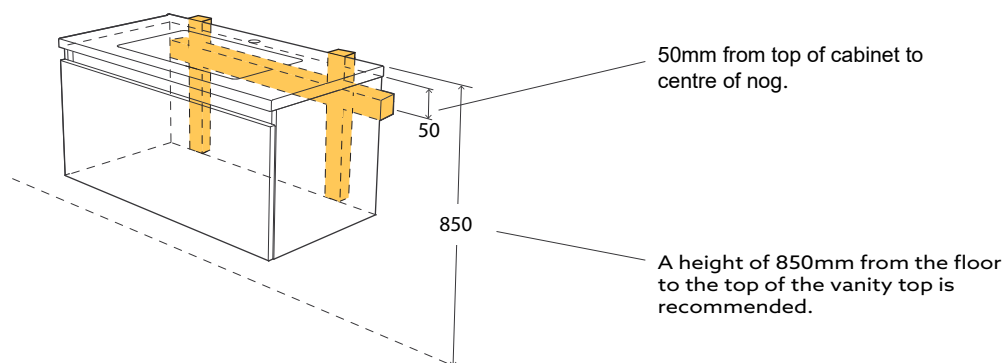


## CONSTRUCTION REQUIREMENTS

Cabinets must be fixed to a nog and at least one stud in the wall.

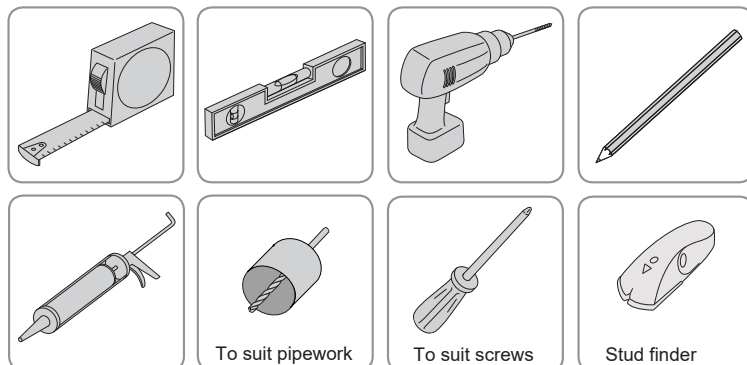
The nog size should be 50 x 75mm.

Use a stud finder to locate studs & nogs in finished walls.

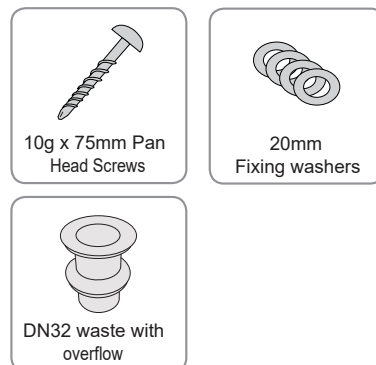


## TOOLS AND MATERIALS REQUIRED - (Not Supplied)

### TOOLS



### MATERIALS - Not supplied & must be purchased separately

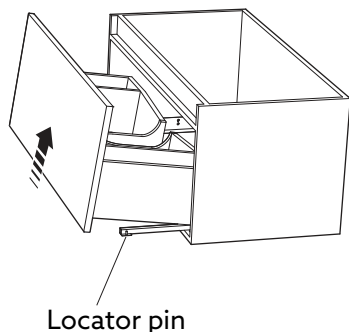


(C) With a suitably sized hole saw drill the holes.

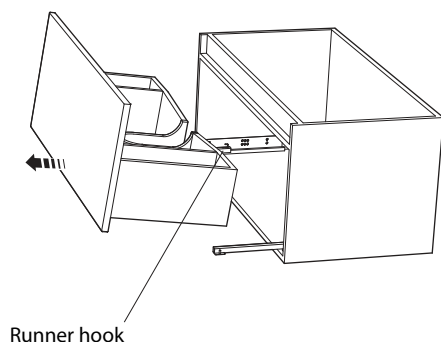
## INSTALLATION

### 1 Drawer removal

(a) Open the drawer and carefully lift up on the end of the drawer to release it from the runner locator pins. It may be necessary to gently pry the runner away from the drawer.

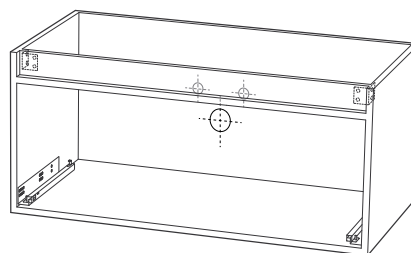


(b) The drawer is now only held by the runner hooks at the back and can be pulled out in the direction shown.



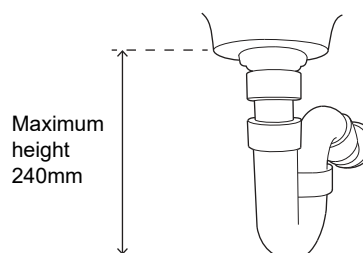
### 2 Water supply and waste pipe holes

(a) Measure and mark the centres for water supply and waste pipes on the back of the cabinet.



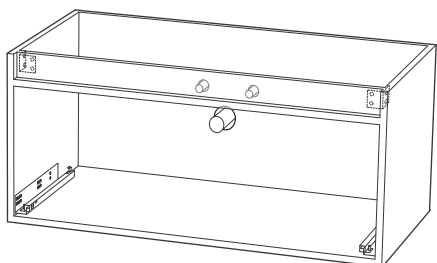
**NOTE 1:** Either a Dux or Aqualine Telescopic Tight P trap is recommended for the Valencia SLIM range of vanities.

**NOTE 2:** Ensure that plumbing holes are positioned to allow for a maximum height of 240mm between the bottom of the basin to the base of the trap.



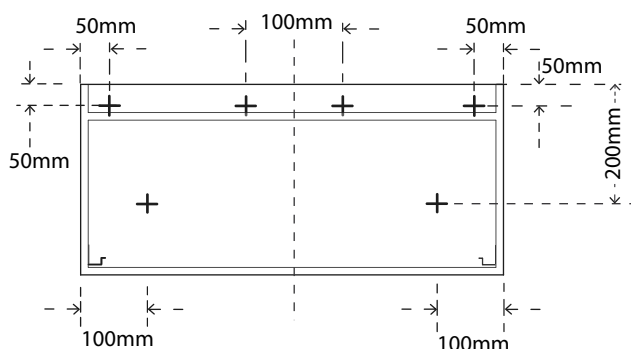
(b) With a suitably sized hole saw drill the holes for the water supply and waste.

(c) Having drilled the required holes fit the cabinet into position over the pipework.

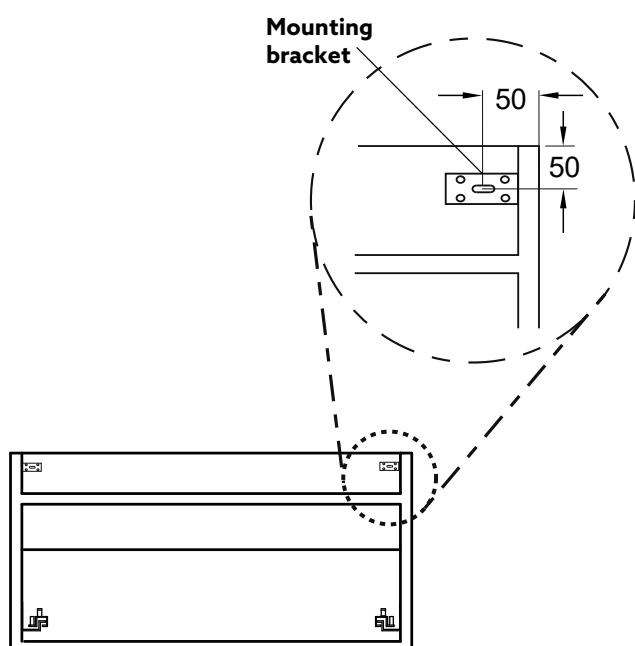


**NOTE:** Before fastening the cabinet make sure that it is sitting level and square.

**NOTE:** Screws should be positioned evenly and fixed into noggs or studs.



### Mounting brackets screw positioning



### 3 Fixing the vanity to the wall

(e) Fix the cabinet to the wall using at least 6 screws (min 10g x 75mm) and \*20mm washers.

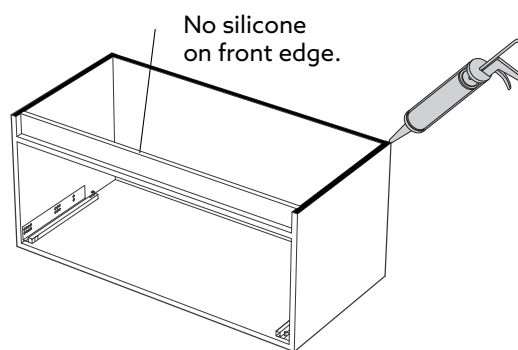
Screw through the back wall so that they screw into the nog and stud(s) in the wall behind.

\*Washers must be used to spread the load.

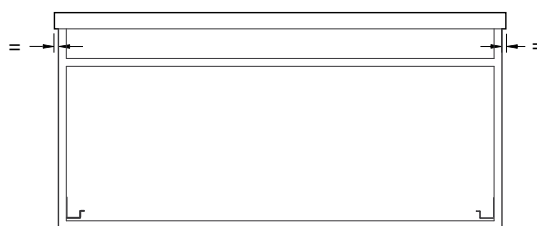
### 4 Vanity top

(a) Unpack the top and check for any damage that might have occurred in transit. Check and confirm the fit of your selected tapware.

(b) Apply a continuous bead of silicone (not supplied) to the top edge of the cabinet sides and back. Ensure there are no gaps in the sealant bead. This will ensure the top stays securely fitted to the cabinet and no water spillage will find its way into the cabinet.



(c) Place the vanity top onto the cabinet ensuring that the back is flush against the wall and there is an even overhang on either side of the cabinet.



(d) Wipe off any excess silicone sealant.

## CLEANING AND MAINTENANCE INSTRUCTIONS

For cleaning instructions, please refer to the Owner's Information Leaflet.

Compression moulded vanity top:

To clean use non abrasive soap and water. It is recommended that the product surface is wiped dry after each use to prevent the build up of soap and scum.

Vanity cabinet:

The materials used in the vanity cabinet are water resistant only, not water proof. Care must be taken to clean up all water spillage onto the vanity cabinet surfaces. To maintain the finish on your vanity cabinet clean with mild soapy water and dry with a soft cloth.

### CAUTION

Material used in cabinet is water resistant only, not waterproof.  
Care must be taken to clean up all water spillage.

### WARNING

FOR YOUR PERSONAL SAFETY AND PRODUCT DURABILITY,  
ENSURE THAT HOT WATER SUPPLY IS REGULATED TO 55 C MAXIMUM

## CONTACT AND WARRANTY INFORMATION

### NEW ZEALAND

Kohler New Zealand Limited

0800 100 382

[info@englefield.co.nz](mailto:info@englefield.co.nz)

[englefield.co.nz](http://englefield.co.nz)

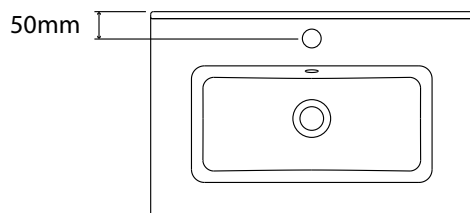
### AUSTRALIA

[englefield.com](http://englefield.com)



## 5 Waste and tapware

(a) Select a basin mixer which is suitable for the tap hole position of this Slim vanity range.



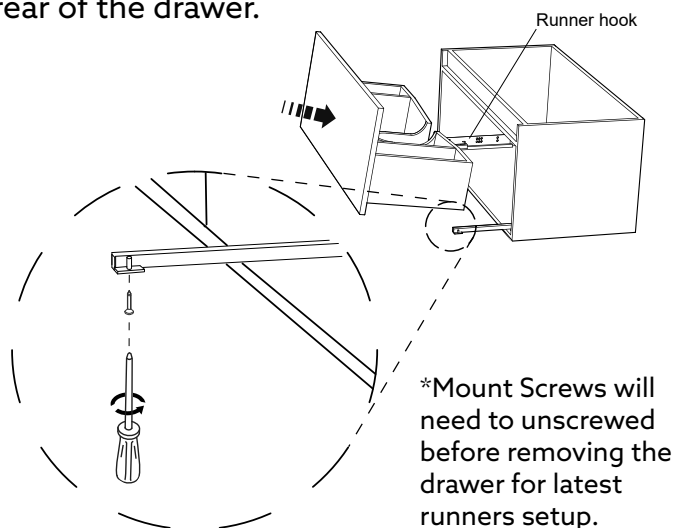
(b) Fit the waste and tapware.

(c) Connect the water supply to the taps and waste pipe to the waste outlet.

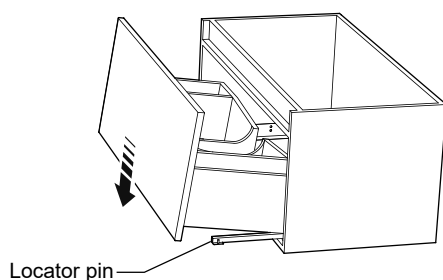
(d) Run hot and cold water and check for leaks. When satisfied with the results move on to the next section.

## 6 Drawer re-installation

(a) To re-install the drawer, extend the runners. Place the drawer onto the runners and slide it back so that the runner hooks insert into the rear of the drawer.



(b) Make sure the locator pins line up with the holes in the bottom of the drawer and press the drawer down so that the pins slot into place.

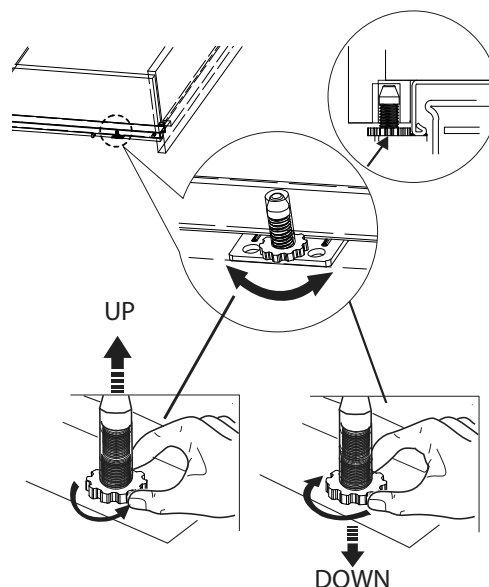


## 7 Drawer adjustment

(b) Turn anticlockwise on the locator pin spacer to raise the height of the drawer and turn clockwise to raise down. Repeat on the other runner.

Height Adjustment

Front Sectional View

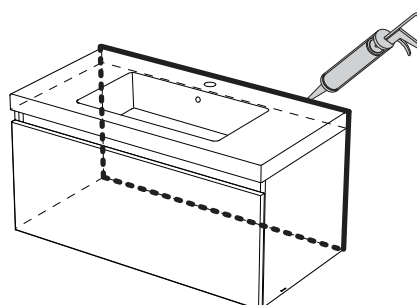


Note: All drawers are aligned during assembly. However further adjustment is often required after installation.

**Please ensure the cabinet has not been twisted and installed correctly before adjusting.**

## 8 Sealing

(a) All edges **MUST** be sealed with an approved Silicone Sealant.



**INSTALLATION COMPLETE**