

# INSTALLATION INSTRUCTIONS



## ACCESSORIES | SIERRA™ CARE TOILET BACKREST

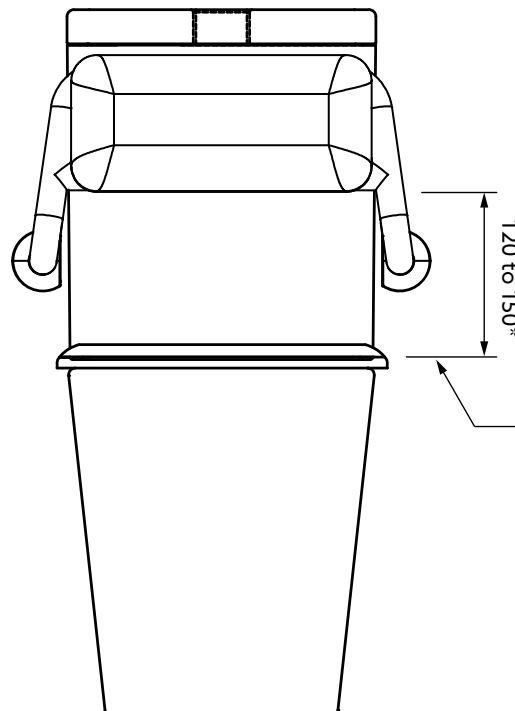
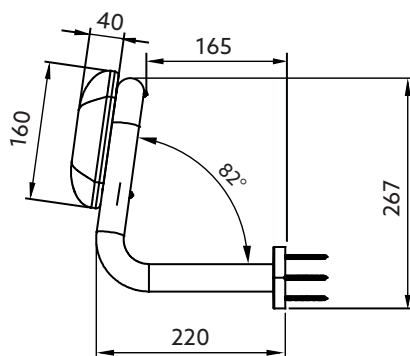
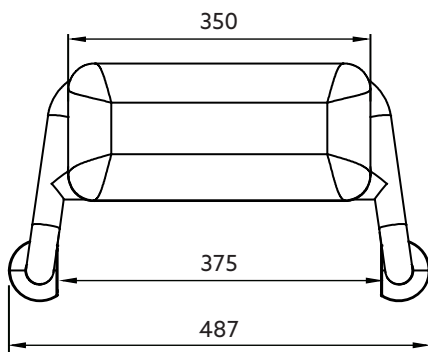
32355A-NA

### BEFORE YOU BEGIN:

All information is based on the latest product information at the time of publication. ENGLEFIELD reserves the right to make changes in product characteristics, packaging, or availability at any time without notice.

Please leave this installation instruction for the consumer as it contains important information.

### ROUGH-IN:



\*Recommend backrest height per AS1428.1

Top of toilet seat

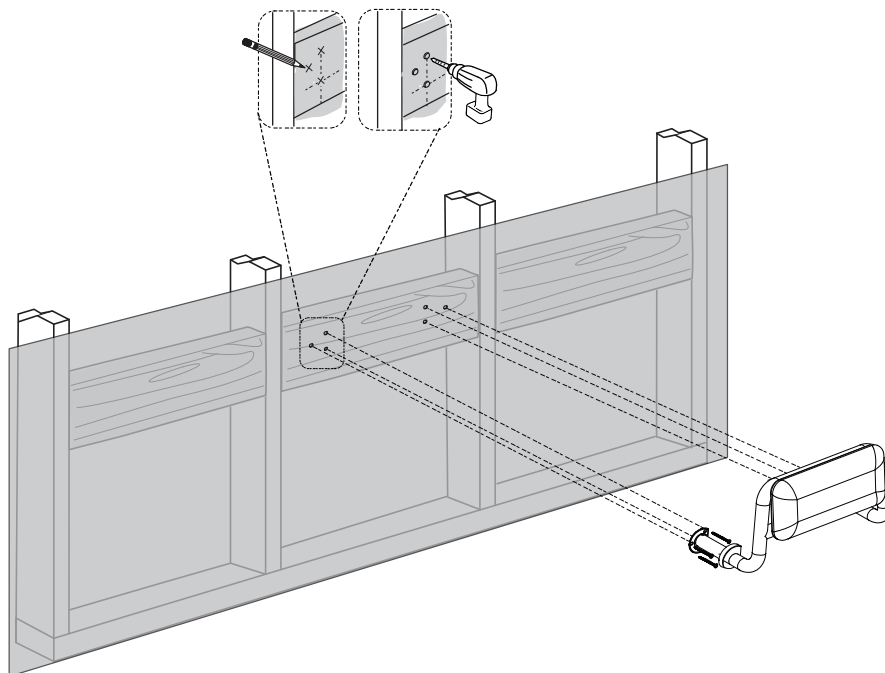
All dimensions in mm

## INSTALLATION:

1. Determine a suitable position on the finished wall for the backrest, avoiding electrical cables and pipes concealed in the finished wall.

**Note:** the backrest must be fixed to timber studs or nogs in the finished wall.

2. Mark the position of wall fixing holes on the finished wall.
3. Fix the backrest on the finished wall with supplied fixing screws and cover the flanges with the caps.



## CLEANING INSTRUCTION:

Many household cleaners contain abrasives and chemical substances, and should not be used for cleaning the PVC cushion or stainless steel frame.

These finishes should be cleaned with a mild washing up detergent or soap solution, and then wiped dry using a soft cloth.

## CONTACT AND WARRANTY INFORMATION:

### NEW ZEALAND

#### KOHLER NZ LTD

0800 100 382

info@englefield.co.nz

englefield.co.nz

### AUSTRALIA

englefield.com

For warranty information, please visit our website.

