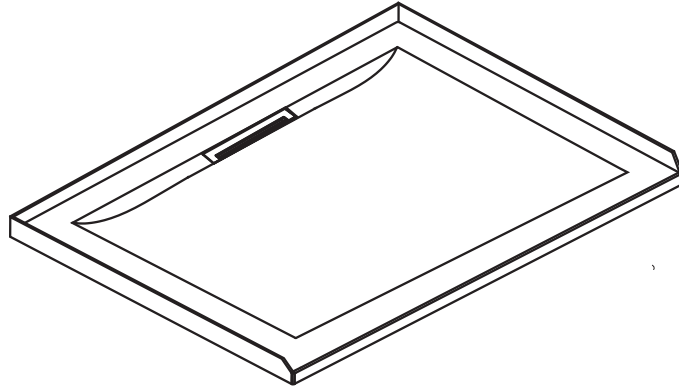


INSTALLATION INSTRUCTIONS



SHOWER | FLIGHT LEVEL SHOWER TRAYS



BEFORE YOU BEGIN:

Before installing the shower please read these instructions carefully to familiarise yourself with the required tools, materials, and installation sequences. After completing the installation, please leave these instructions for the consumer for further reference and change of ownership.

Refer to separate care and maintenance guide for important care and cleaning information. Carefully unpack and check for transit damage, colour, flatness, general acceptability. Report any faults immediately to your supplier.

Store tray flat. **DO NOT** lean against wall.

SAFETY:

1. Follow all warnings, cautions and instructions contained in this guide.
2. **Warning!** Two-person lift.
3. Wear protective footwear when lifting and shifting the tray.
4. Wear safety glasses when drilling.

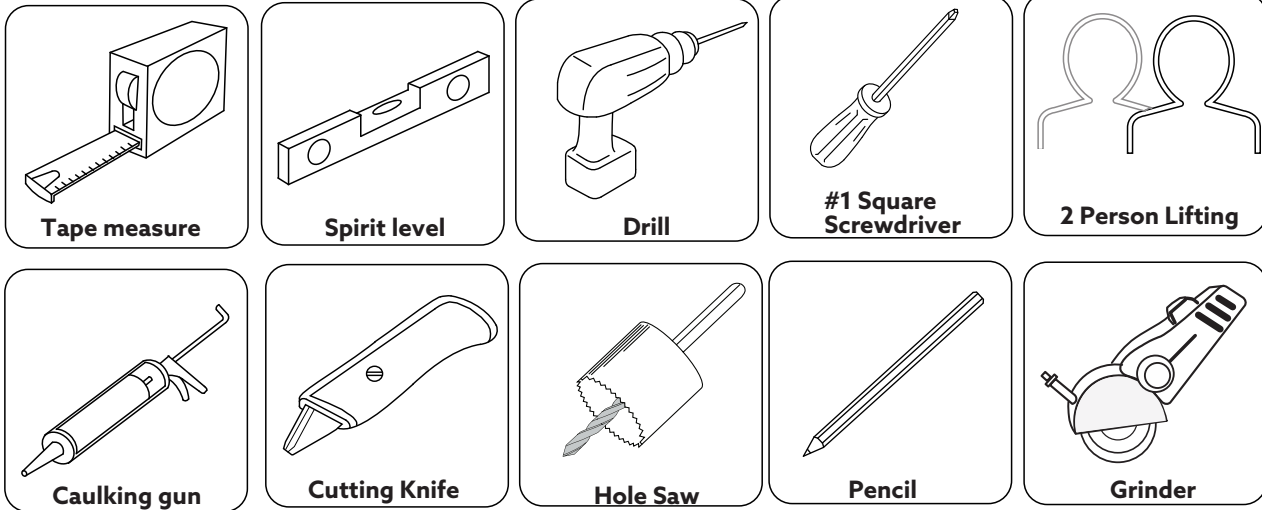
ATTENTION:

1. We recommend this tray to be fitted as part of a fully enclosed cubical.
2. If this tray is fitted as a walk-in installation, it is expected that an amount of water will spill onto the open area of the floor. We would therefore advise fixing a threshold strip to minimize this.
3. Flow rate into the tray must not exceed **25 litres per minute**. Excessive flow rates may lead to overflowing and leaking.
4. We recommend a drainage test is carried out to ensure the waste pipe work is adequate for the flow delivered.
5. The waste should be located to allow good access for maintenance or replacement with minimum disruption. Kohler NZ will not be liable for any cost associated with access restrictions and subsequent works.
6. Building requirements can vary, local regulations must be checked prior installation.

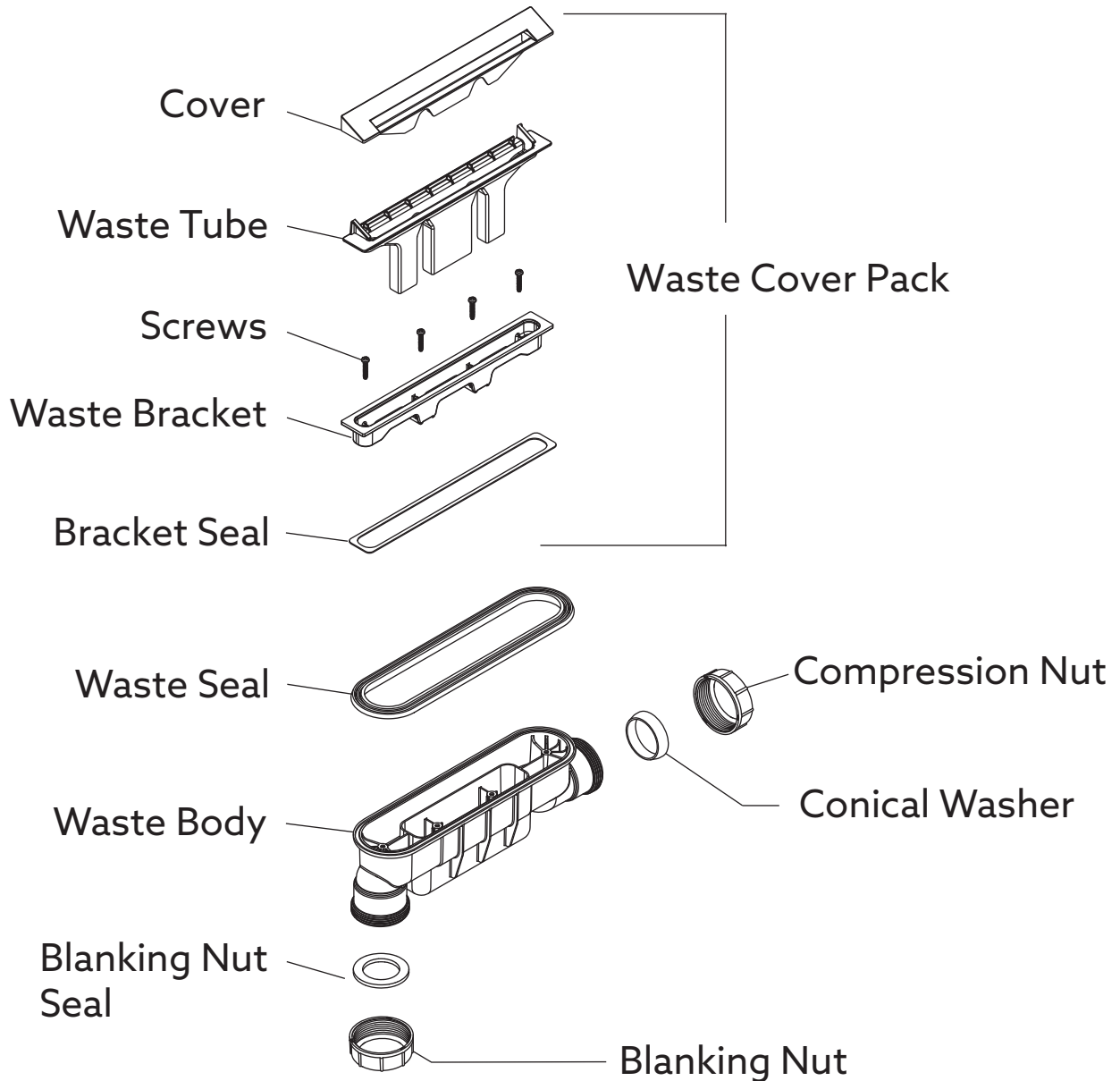
NOTE:

It is the responsibility of the installer to ensure that the installation complies with council and local authority by laws.

TOOLS AND MATERIALS REQUIRED:




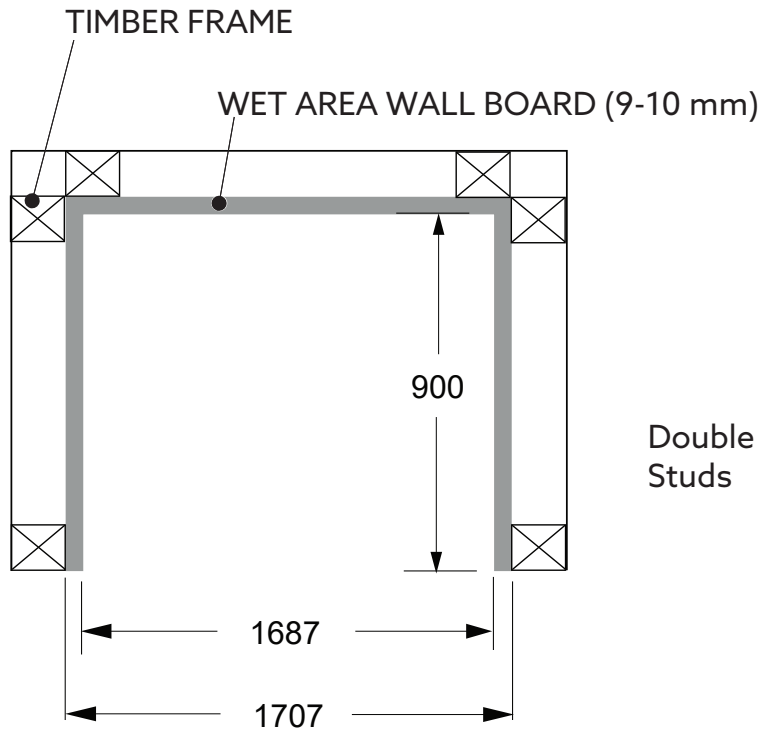
PARTS IDENTIFICATION - WASTE FITTING:



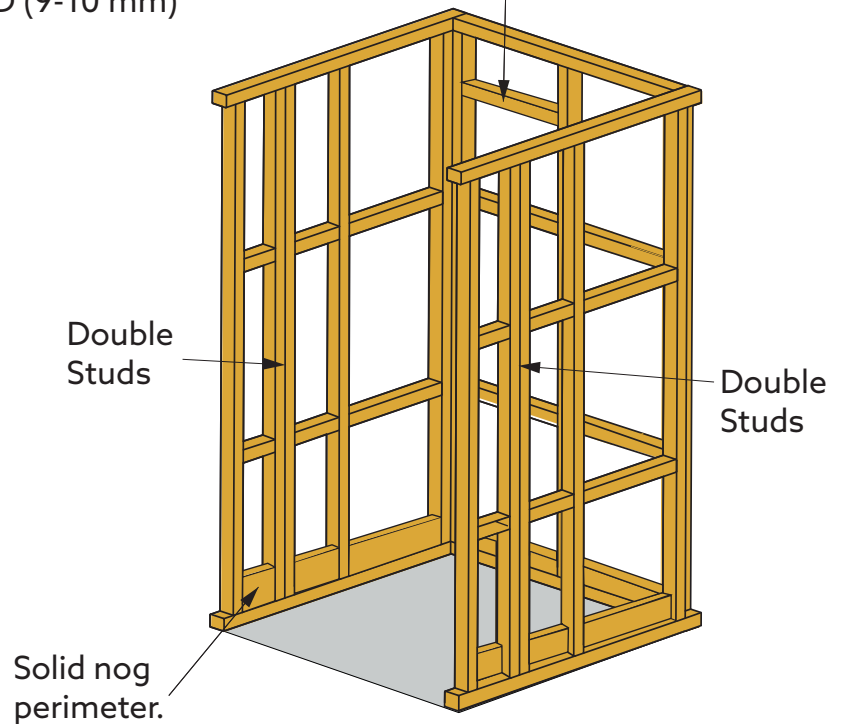
CONSTRUCTION REQUIREMENTS:


Wall Framing:

 Attention Due to the weight of the glass panels Englefield strongly recommends fixing the wall retainers to double studs for all installation types (as shown).



Check if the door or shower screen to be installed require extra nogs.



 Check the fit of the tray before completing the timber frame construction. Dimensions given are nominal. Ensure there is good access to the waste fitting for maintenance.

Timber Floor:

When installed on a timber floor, the floor board should be supported at not greater than 400 mm centres and the cut-out waste connection kept to a minimum.

Concrete Floor:

When installed on a concrete slab floor, chases or channels left for plumbing must be completely backfilled.

INSTALLATION - OPTIONS:

- ⚠ Install wall as per instructions supplied with the wall.
- ⚠ The floor area must be flat, level, clean, and free of any bumps and protrusions.
- ⚠ Additional protective coverings such as dust sheet should be used to protect the tray from falling objects during installation and cover the waste opening to prevent loss of small parts during installation.

Fig.1 - Tray and non acrylic wall

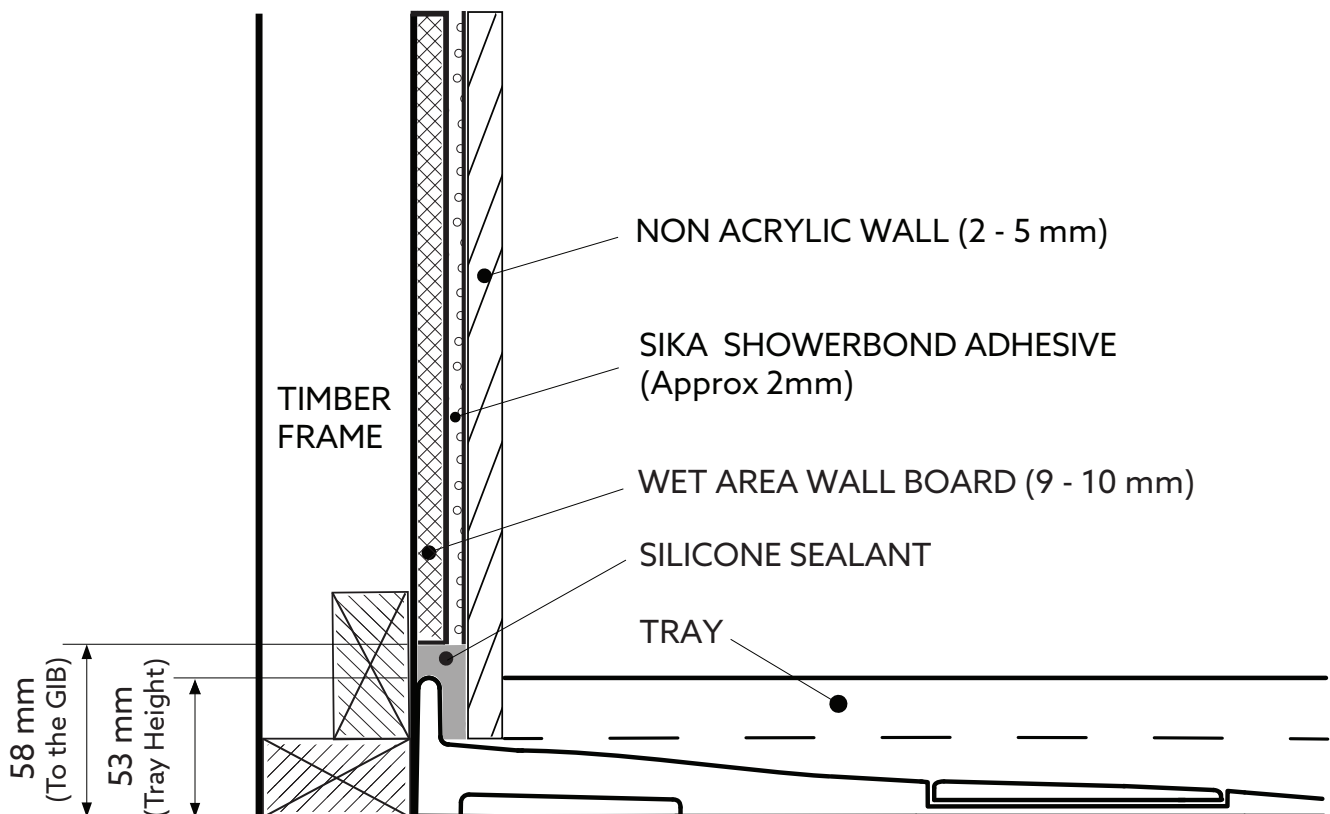


Fig.2 - Wet area wall board and tiles method 1

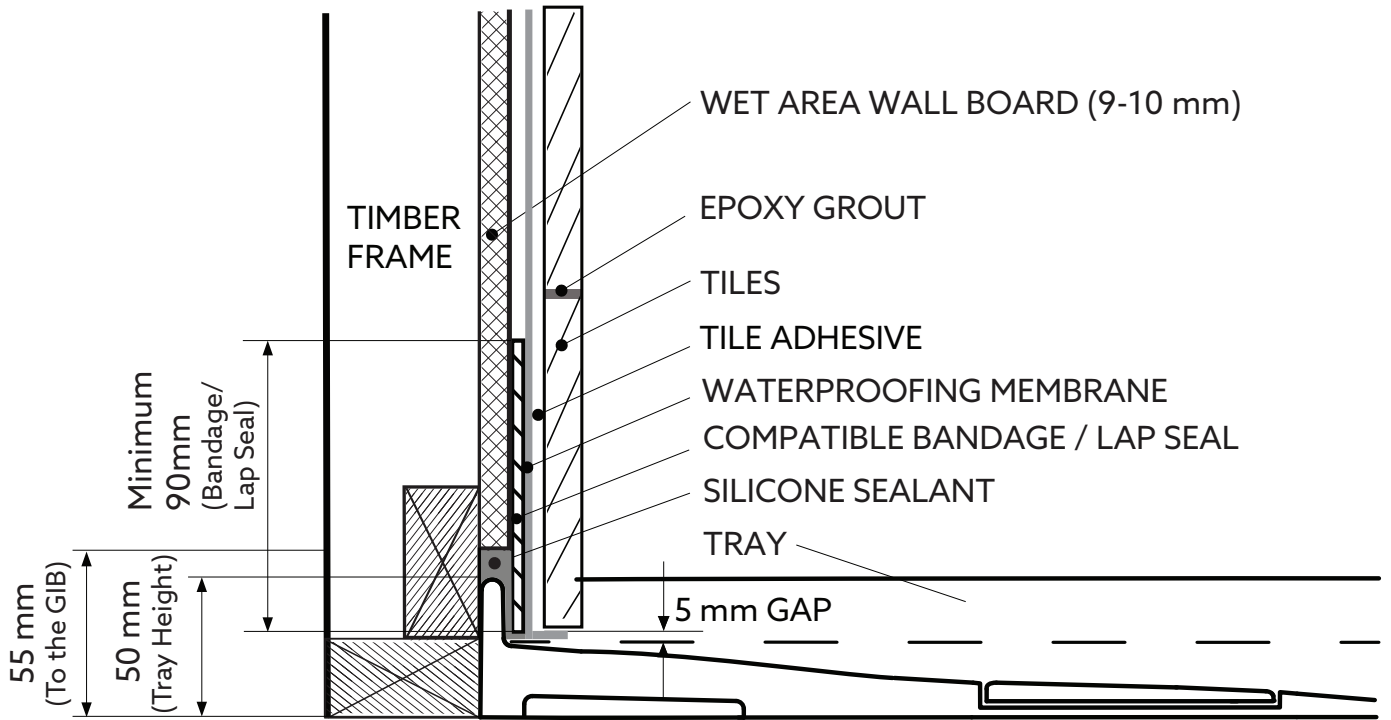
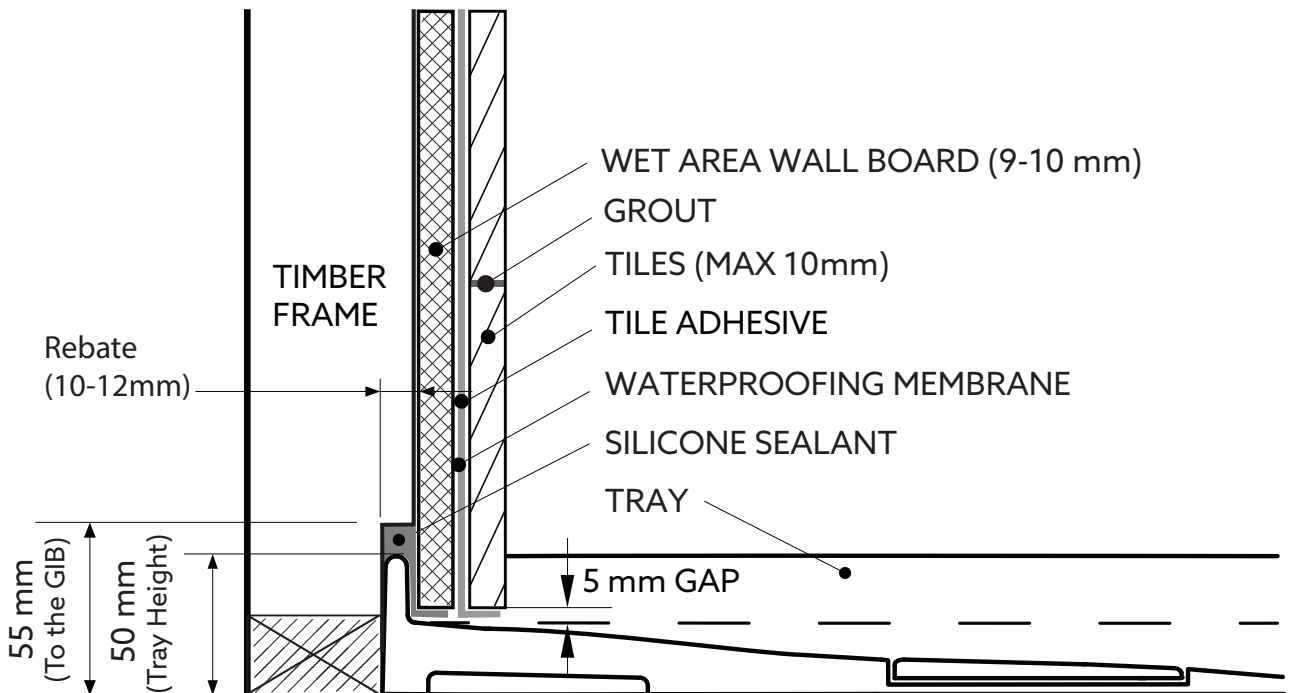
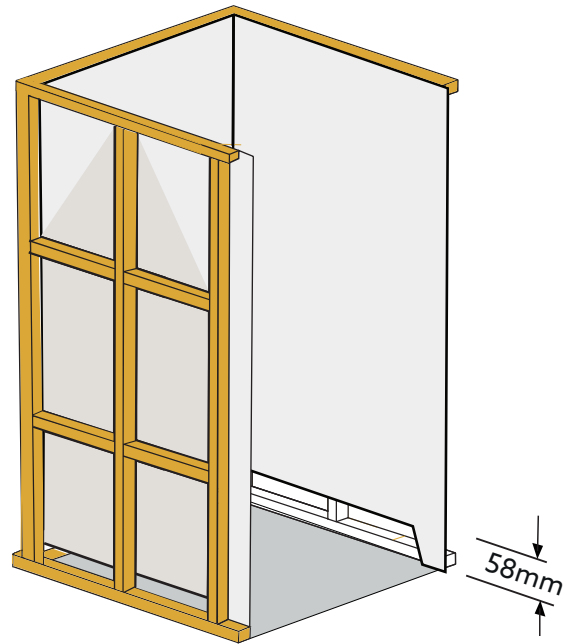


Fig 3 - Wet area wall board and tiles method 2

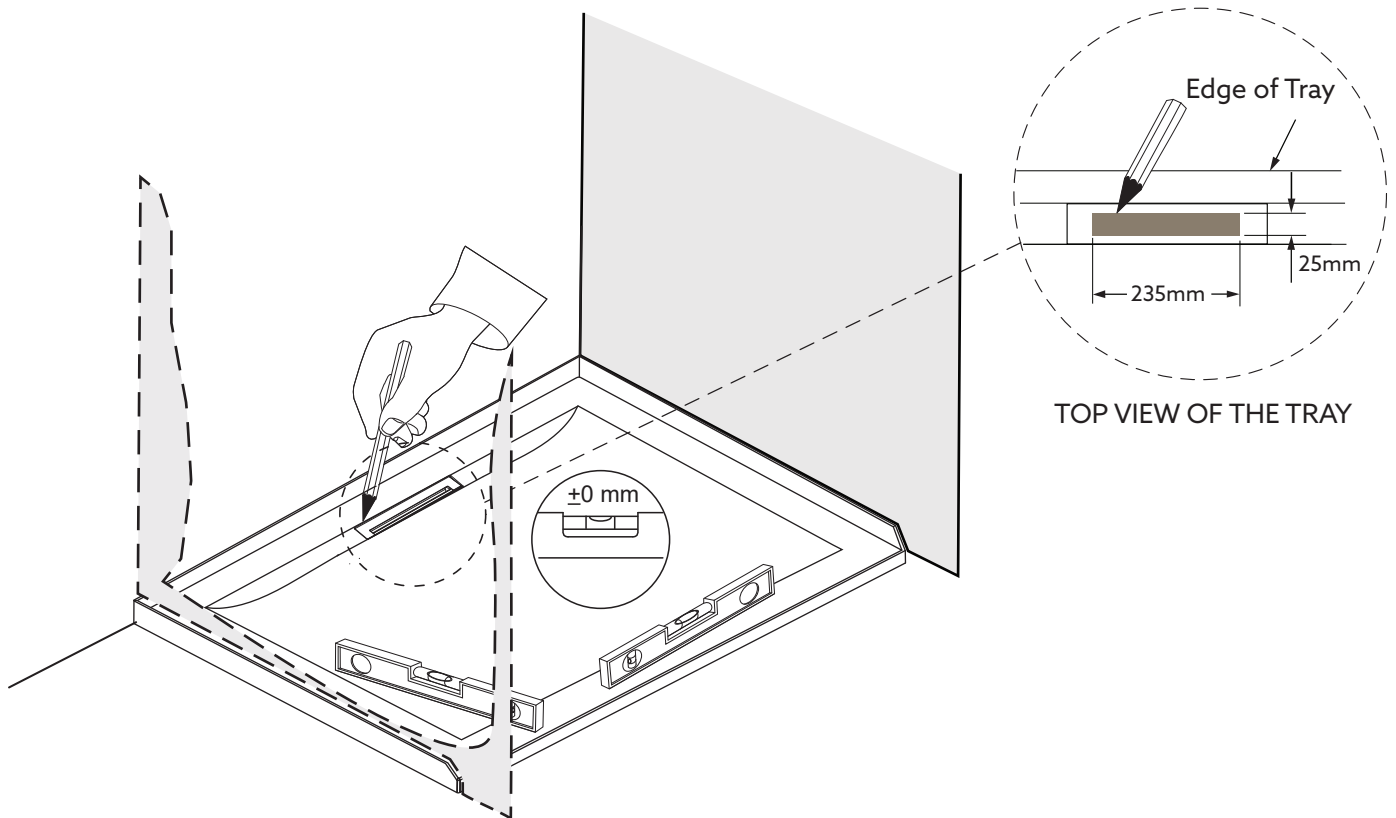


Preparation:

1. Determine the location of the tray and cut the wallboard to slide the tray under.



2. Determine waste location.



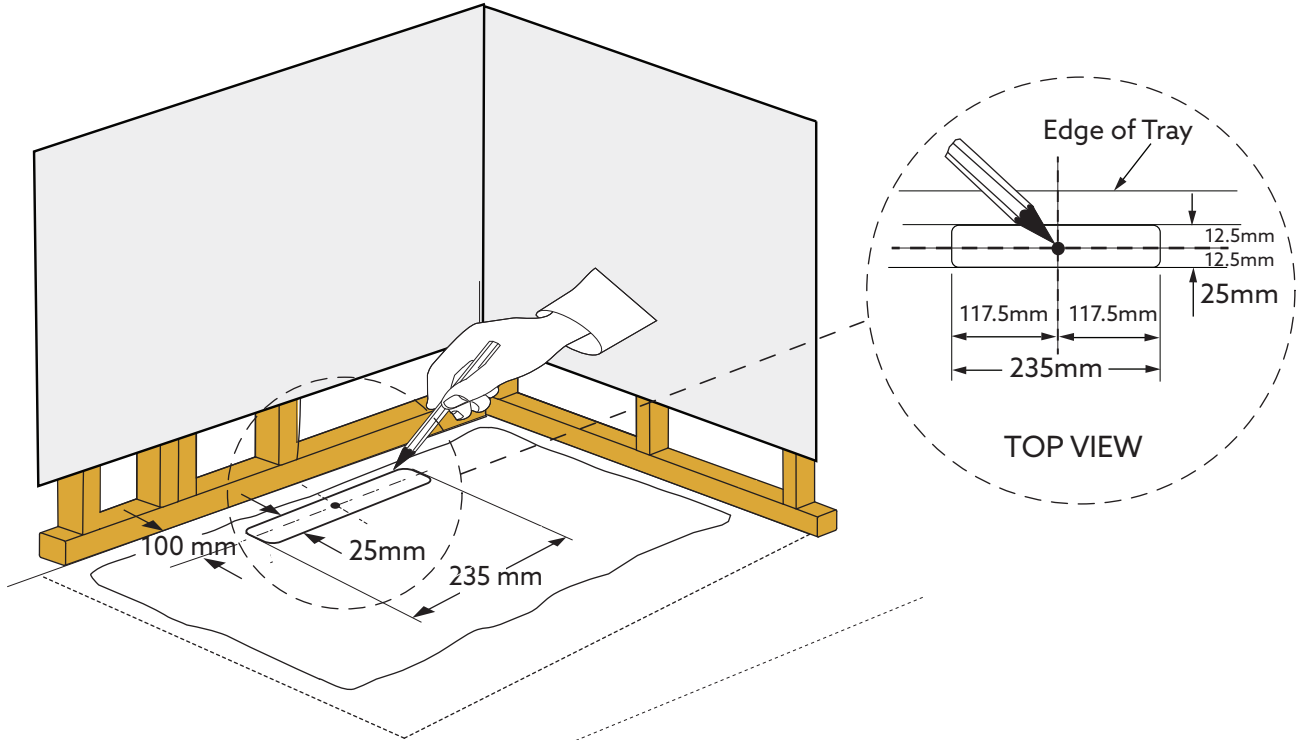
a. Place your shower tray down in the desired location (example illustrated).

b. Mark the waste location through the tray with a pencil in order to create a template on the floor (draw around the inside of the waste hole in the tray).

c. Move the tray to one side.

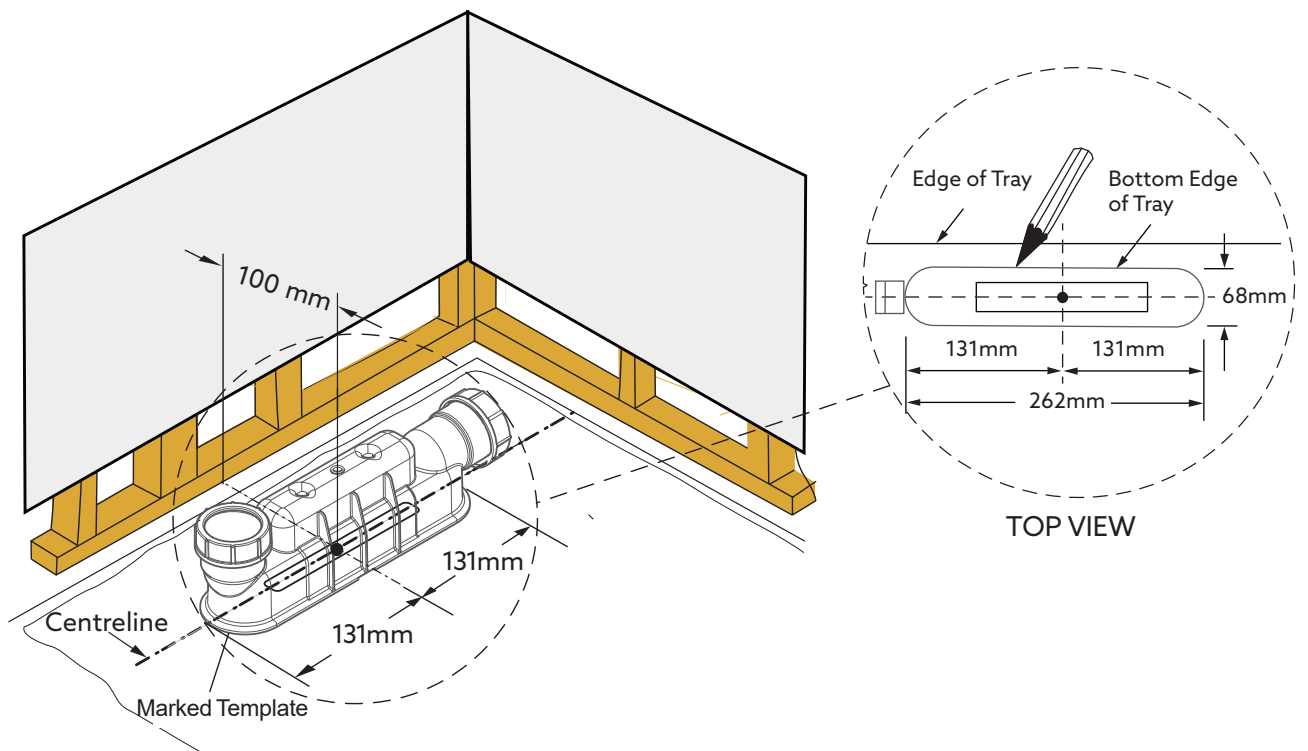
3.

- a. Mark the centre line half way along the width of the pencil line template you have made on the floor.
- b. Mark the centre line halfway along the length of the pencil line template you have made on the floor (overall length should be 235 mm, so half way should be 117.5 mm).



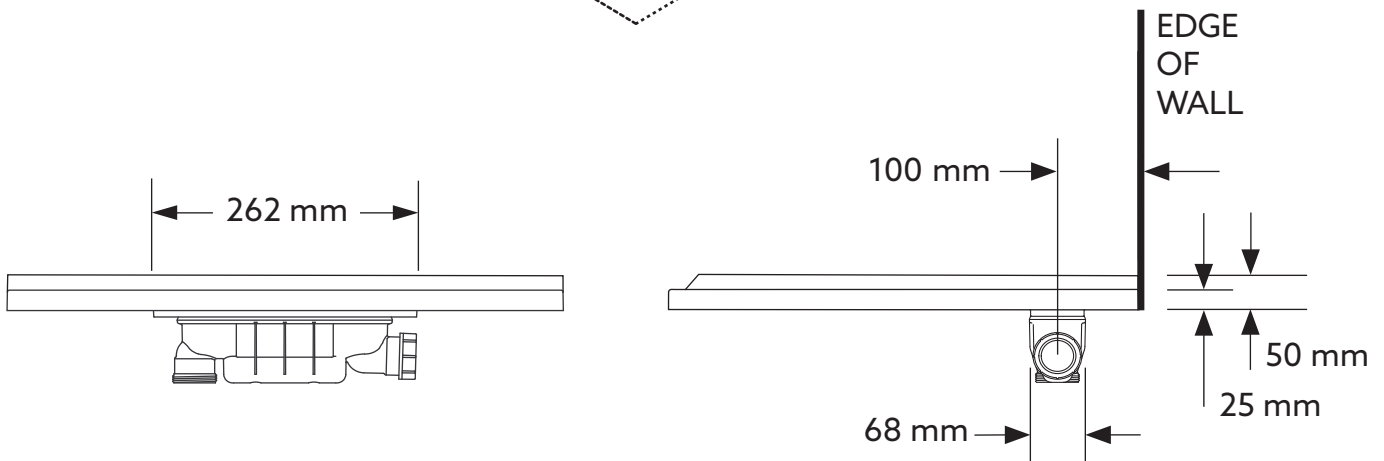
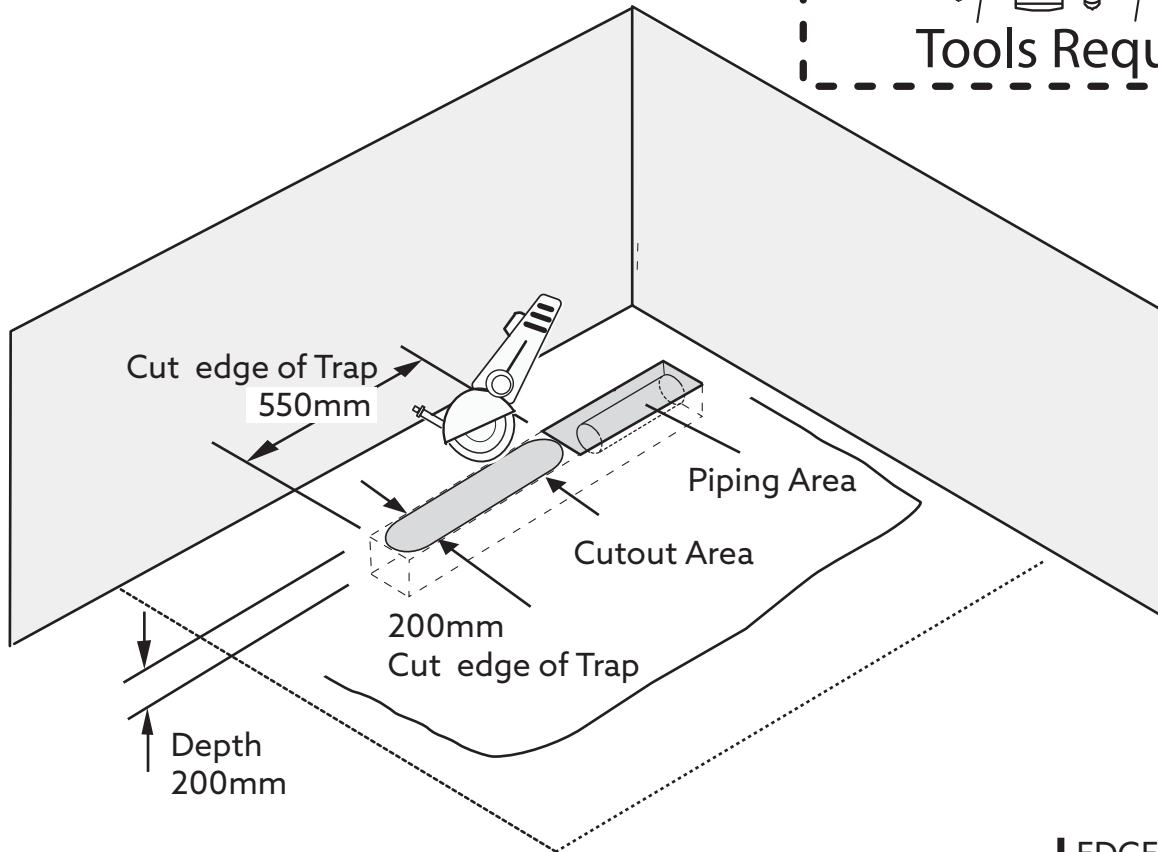
4.

- a. Place the waste body over your template, matching your centre line with the centre rib (on the side of the waste body) and trace around the edge.
- b. Measure in from where the stud edge will lie, 100 mm to the waste pipe centre on the waste.



5. Now you have the correct waste position, measure/cut your waste pipe accordingly and fit it to the waste as detailed in the next steps (some minor adjustments may be required as necessary).

Note: The compression fitting on the waste is designed to accept '40mm' pipe.



Note: If required, create an opening in the floor in order to accommodate the waste body and pipe. Make the opening oversized in order to give you greater flexibility during fitting of the waste.

Note: Make sure that you have enough room within the floor recess to comfortably house the waste and fall of the waste pipe.

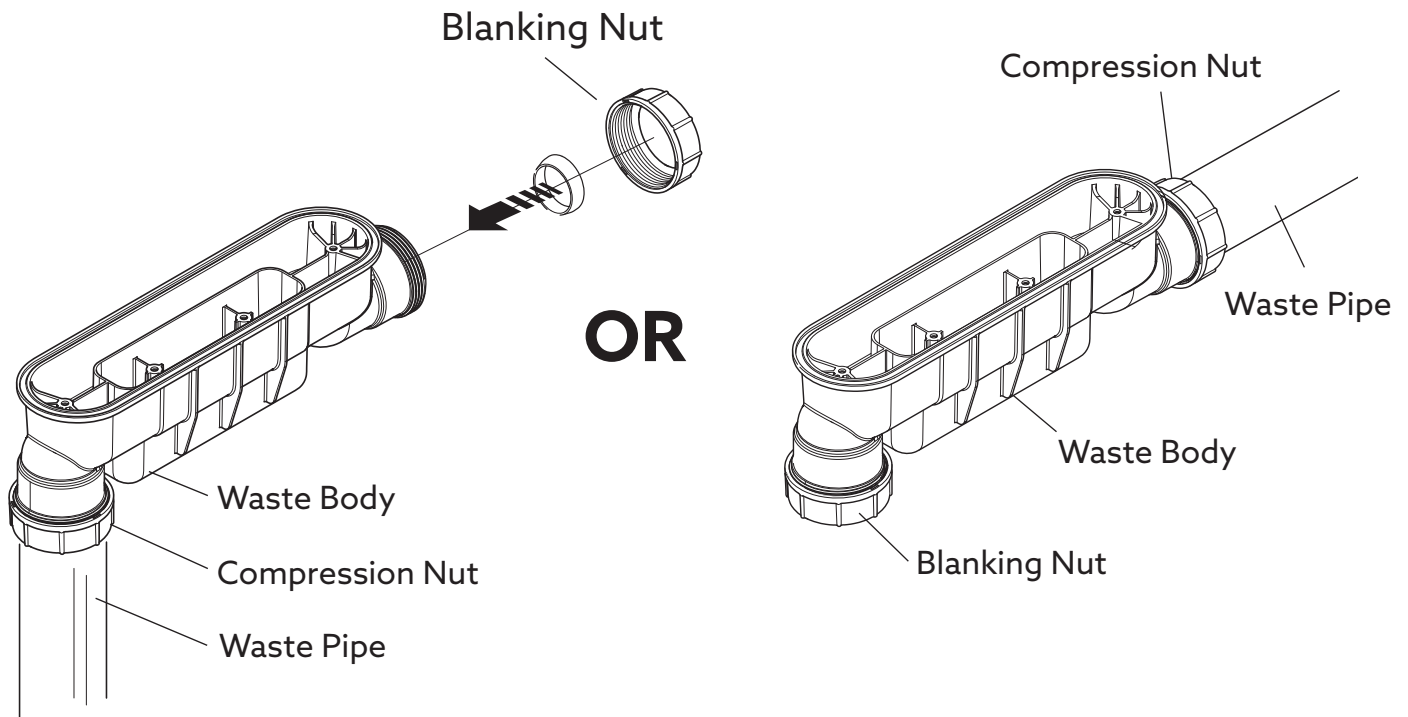
Shower Tray Installation:

1.

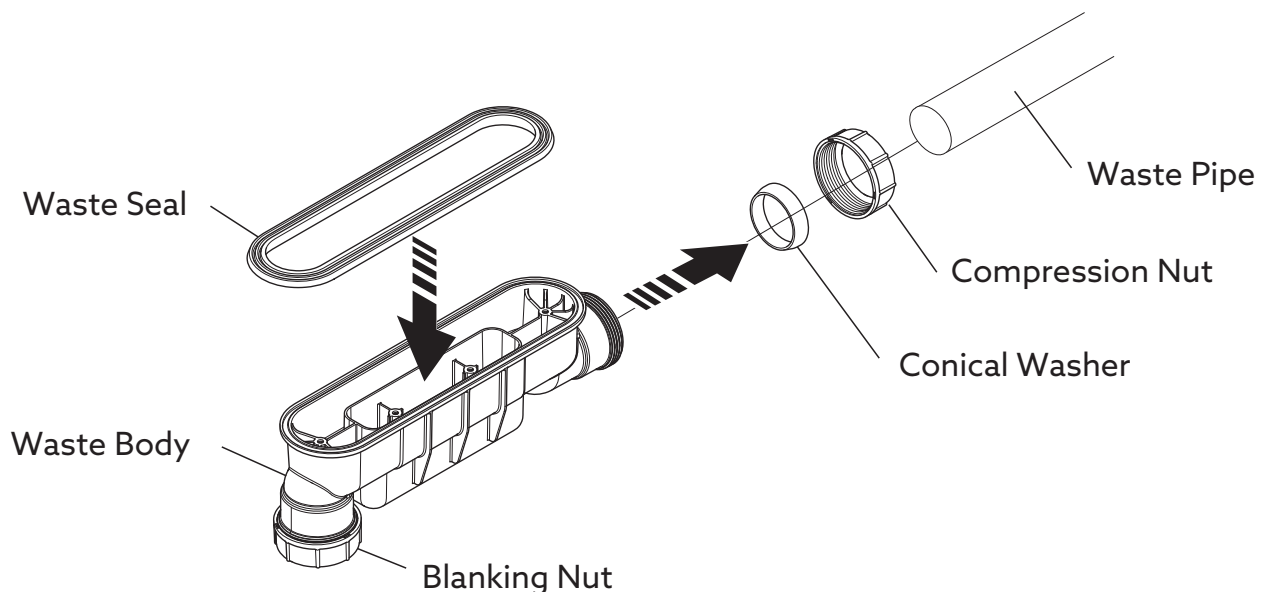
a. The waste has two drain outlet options. Utilise the outlet suitable for your waste pipe configuration.

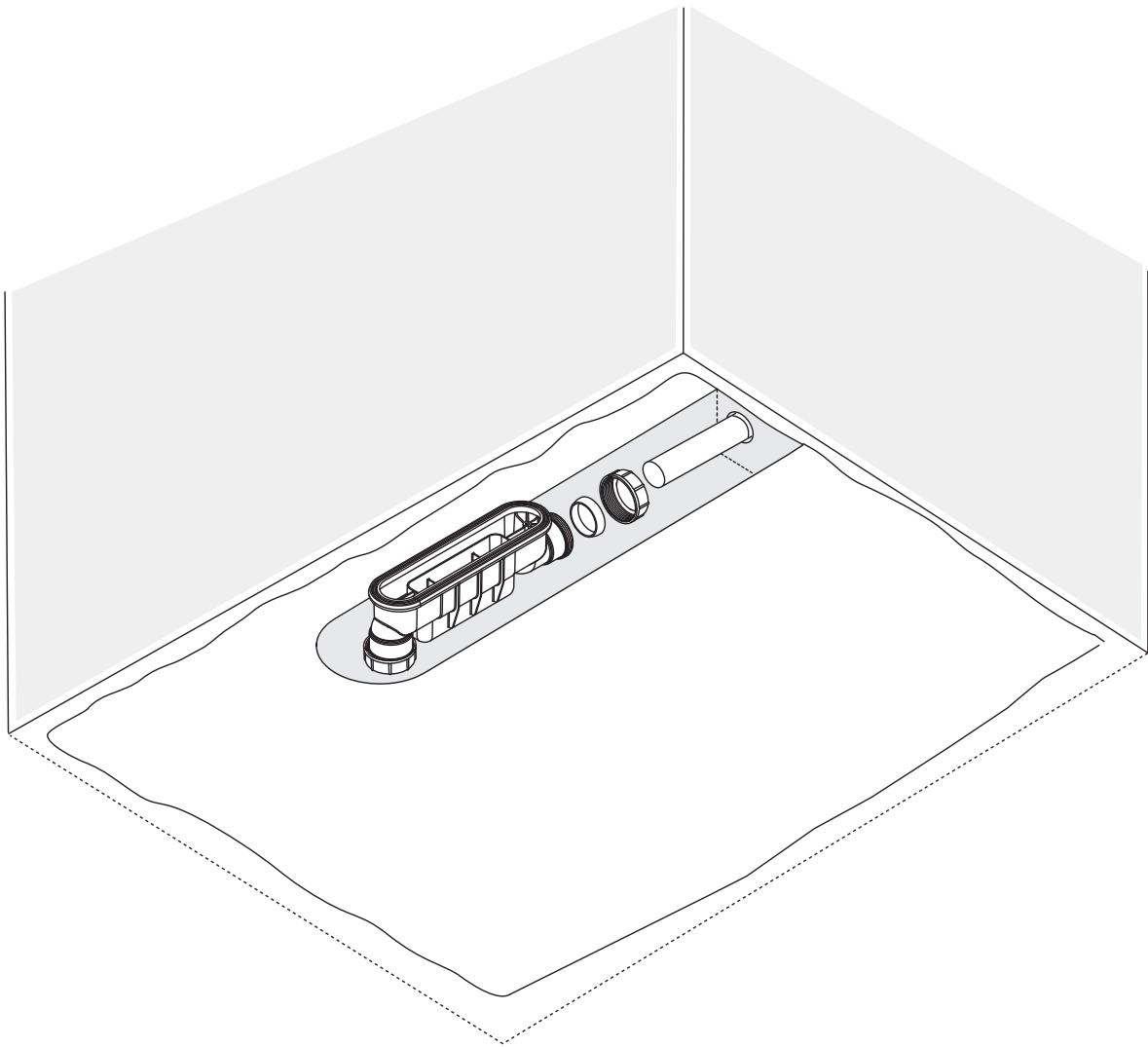
b. Shut-off the unused outlet using the blanking nut and washer.

Note: Ensure the blanking cover is fully tightened to avoid leaks.



2.



3.

For water to drain away properly, the waste pipe must have a minimum of 18 mm per meter fall.
The waste pipe must be properly supported to hold its own weight and that of the waste assembly.

- a. Connect the waste body to the waste pipe and tighten the compression nut.

⚠ Note: Ensure the compression nut is fully tightened onto the pipe to avoid leaks.

- b. Pour water down the drain to check that the waste is not blocked and there are no leaks.

- c. Re-site the tray to ensure the waste hole alignment, adjust as necessary.

⚠ Note: Ensure the waste body is completely parallel and fully aligned to the tray orientation, this is vital to ensure the waste can be fitted through the tray waste opening and the screw holes in the waste body perfectly align with the corresponding screw holes in the top bracket.

4. Installation Method:

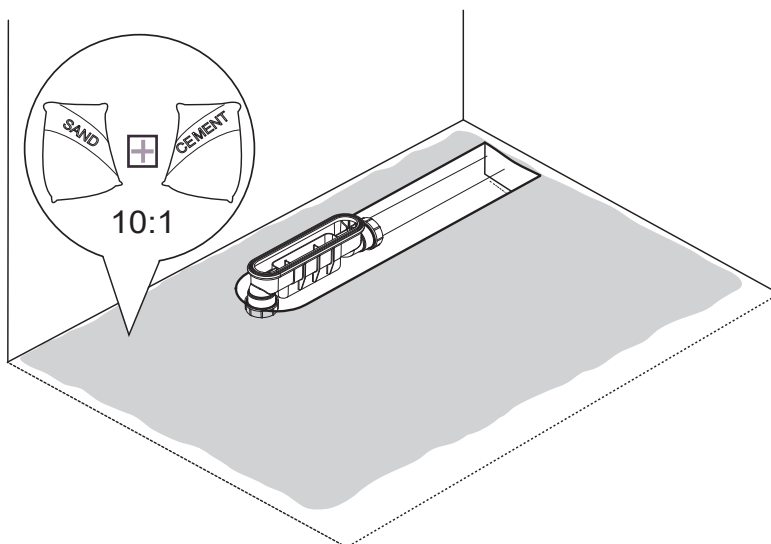
A) Cement Slurry Mix:

Many tradesmen prefer to install tray on a weak cement slurry (approx. 10:1 "sand and cement") thus ensuring complete support over the entire load-bearing area. However this step is not necessary providing that installation is on a flat, level surface free of bumps and protrusions.

When installed on a concrete slab floor, chases or channels left for plumbing must be completely backfilled.

Building requirement can vary, local regulations must be checked prior to installation.

Carefully cover the waste to prevent any dirt and debris from entering while preparing a bed of sand and cement or silicon sealant for shower tray.



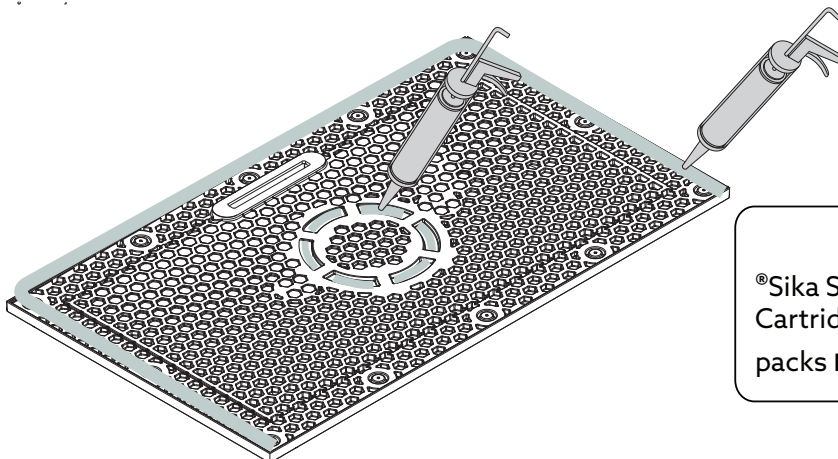
! IMPORTANT

- Shower tray must be installed level!
- Tray must be fully supported!

Failure to comply voids warranty.

B) Construction Adhesive:

With the tray laying upside down, apply a suitable adhesive, such as ®Sika Nailbond PB, to the bottom edges of all feet and the bottom edge along the front of the tray.

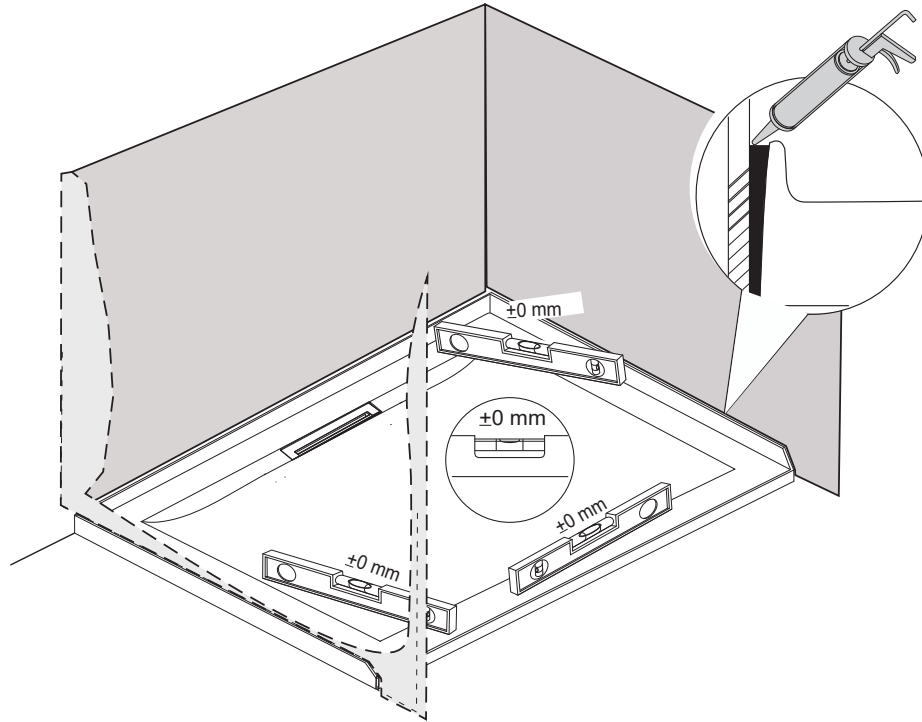


! NOTE

®Sika Showerbond is not recommended. Cartridges from ENGLEFIELD adhesive/sealant packs **must not** be used for this purpose.

5. Note: Double check the waste position is correct and is aligned to the tray waste opening prior to the tray being fixed into place.

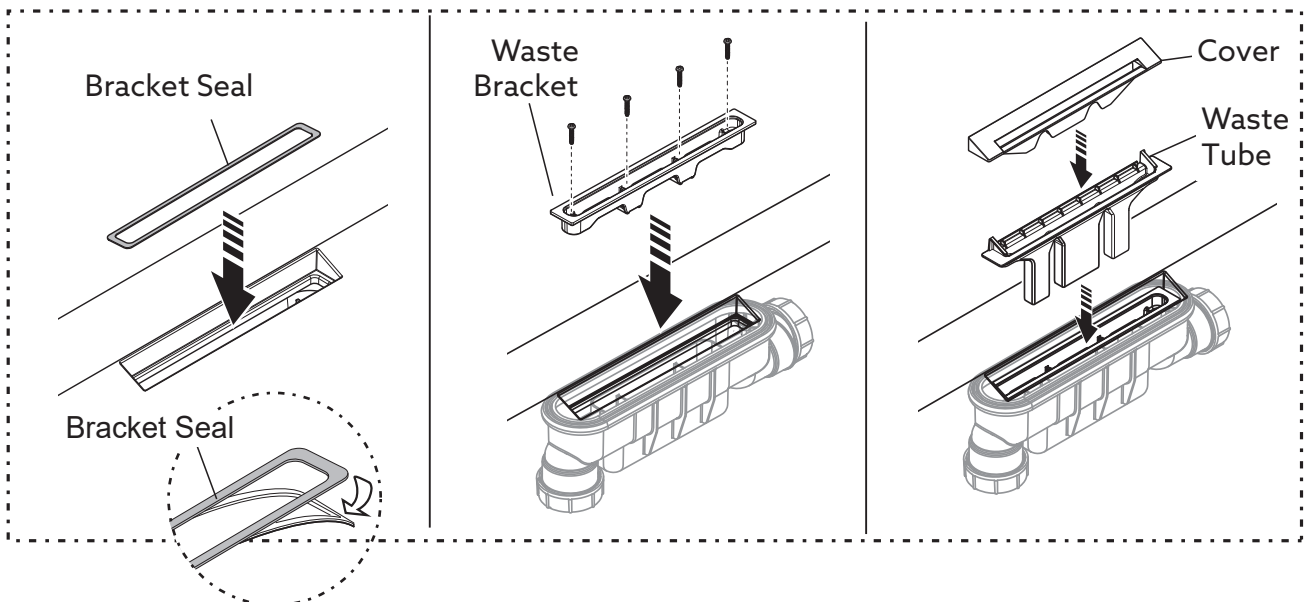
- a. Place the shower tray on your base (sand/cement or silicone) and using a spirit level check that it is straight and level.
- b. Prior to pushing the tray into place, apply a bead of silicone sealant around the upright edges of the tray where it will contact the wall.



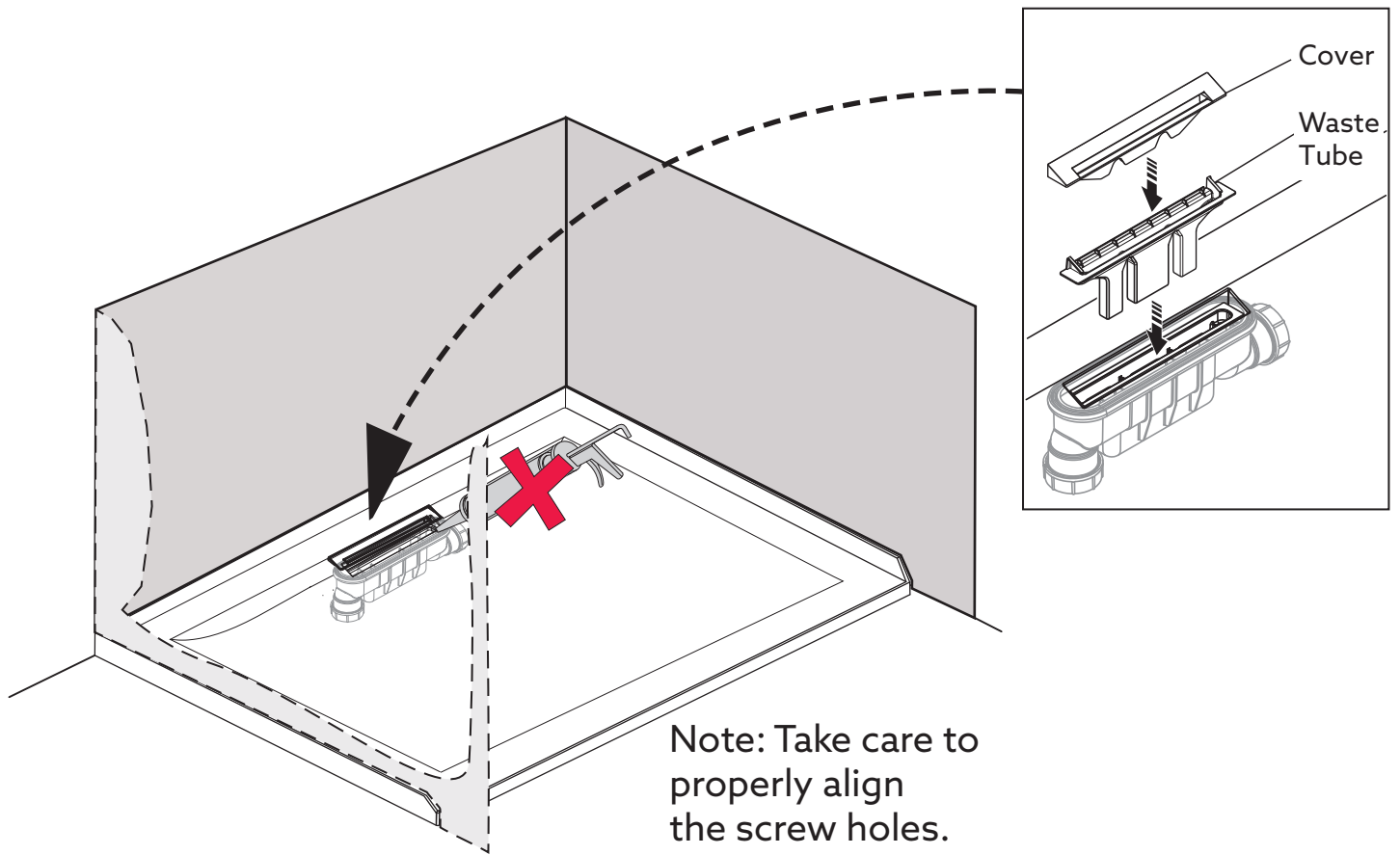
6.

- a. Fit the bracket seal. The seal is adhesive on one side. The paper needs to be pulled off and the seal stuck to the ledge around the waste opening on the tray.
- b. Install the waste bracket and tighten using screws (only use fixing screws supplied) to ensure a correct seal. Ensure tight enough to form a good seal, however **DO NOT** over-tighten it.

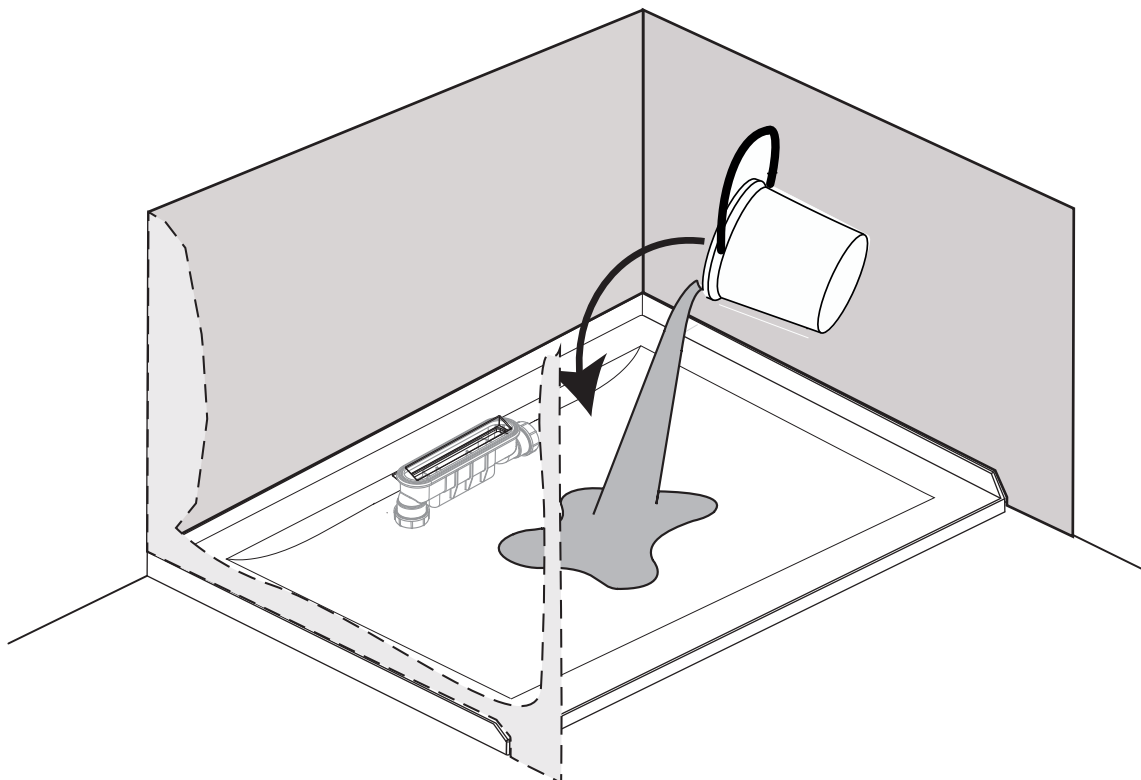
! Note: Use hand screw driver only to avoid damage.



c. Press fit the waste tube and cover. **DO NOT** apply silicone sealant.

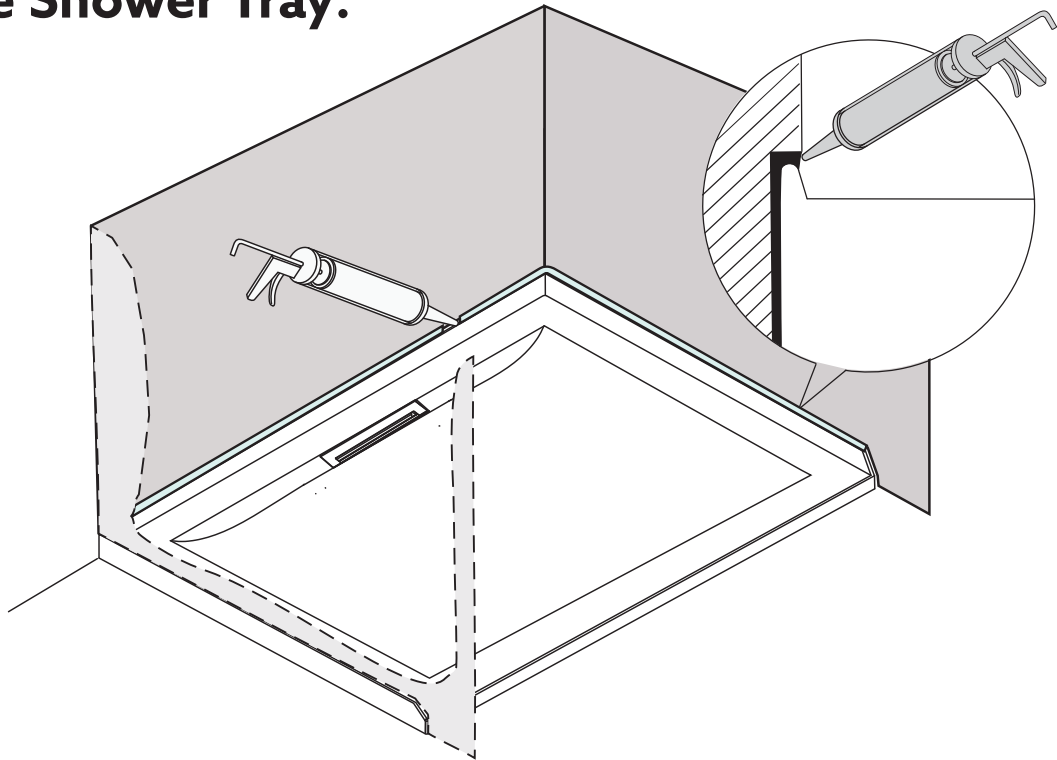


d. Check the waste for leaks by pouring basket of water.



Sealing the Shower Tray:

1.



Apply silicone sealant in accordance with the manufacturer's instructions to seal the shower tray to the wall.

2.



Tile the walls down on top of shower tray. Apply silicone sealant in accordance with the manufacturer's instructions to seal the shower tray to the tiled wall surface.

Care and Maintenance

⚠ **Warning !** The use of grout/tile cleaners, scale removers, abrasive scourers, drain unblockers and other powerful detergents may lead to damage of metallic, plated and plastic surfaces, including the tray and shower waste.

⚠ The acrylic surface of this shower tray has good resistance properties to acids but should not come into contact with alkaline or organic solvents, such as caustic soda, dry cleaning agents, paint strippers and strong acids. Should the shower tray be subjected to any non-approved substance it must be cleaned immediately.

⚠ Particular care must be taken not to damage the manufacturing logo.

⚠ Only clean this shower tray with warm soapy water, the tray should be wiped dry with a lint free cloth.

⚠ Cleaners of gritty or abrasive nature should **never** be used.

⚠ Care should be taken when cleaning anti-slip surface.

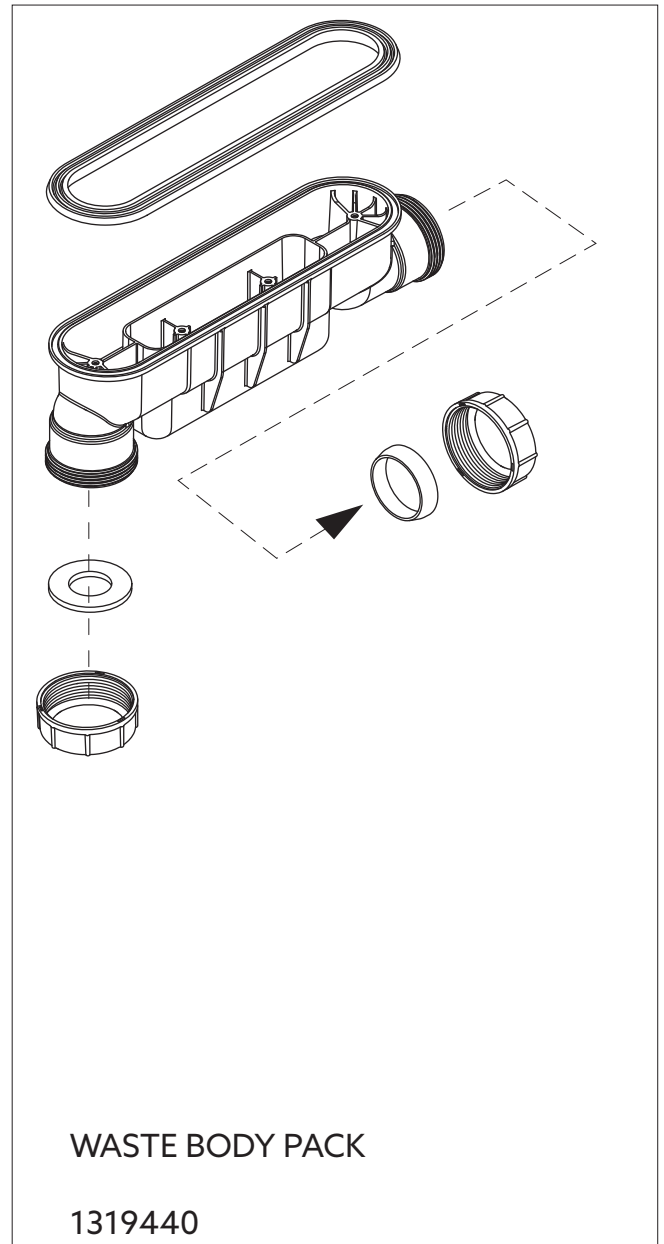
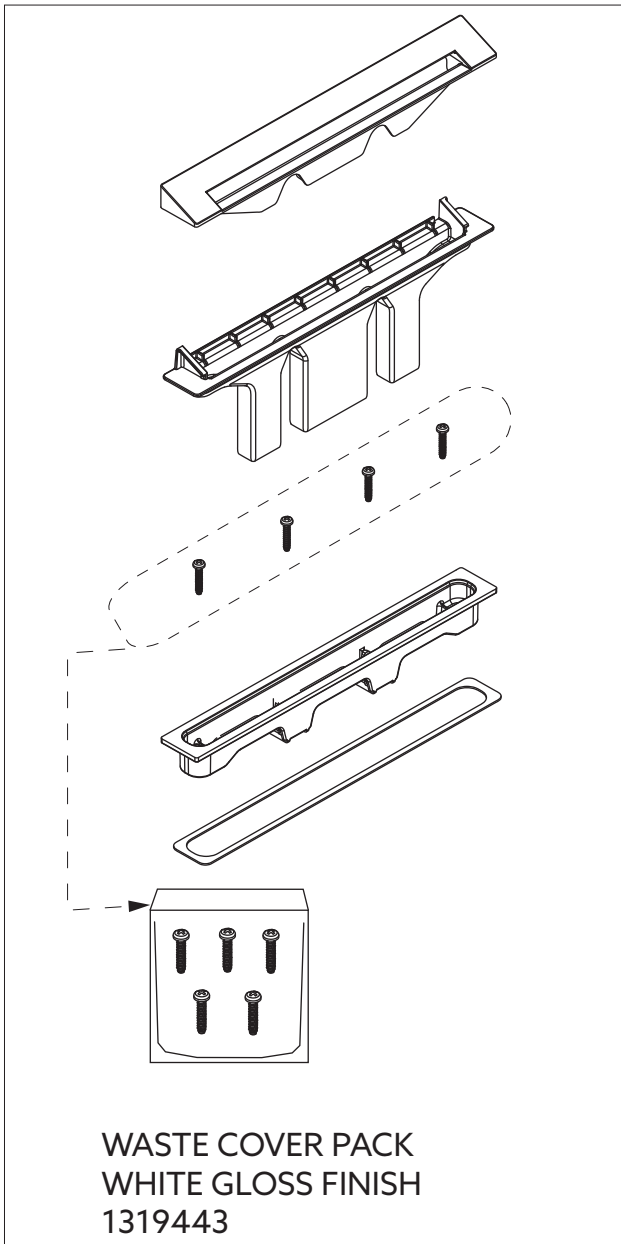
⚠ Regularly clean the waste to ensure correct operation.

⚠ The waste cover and trap (tube) section can be removed for easy cleaning.

⚠ The waste cover has an integrated hair catcher that should be cleaned regularly to avoid reduction in flow rate.

⚠ Kohler New Zealand cannot be held responsible for damage or the effects e.g. discoloration, caused by third party substances and/or materials such as bath or shower mats.

Spare Parts



CONTACT AND WARRANTY INFORMATION

NEW ZEALAND
Kohler New Zealand Limited

0800 100 382
info@englefield.co.nz
englefield.co.nz

AUSTRALIA

englefield.com

