

INSTALLATION INSTRUCTIONS



TAPWARE

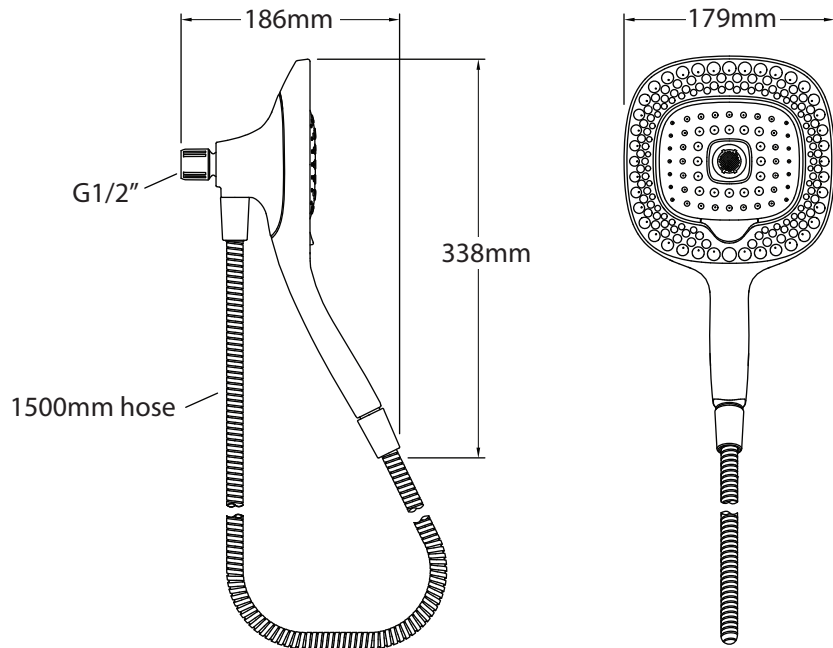
DUO

Shower Head & Hand Shower

21950A



ROUGH-IN SPECIFICATION



BEFORE YOU BEGIN

All information is based on the latest product information available at the time of publication. Englefield reserves the right to make changes in product characteristics, packaging, or availability at any time without notice.

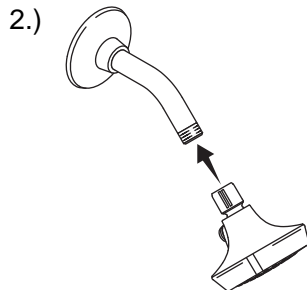
**Please leave these instructions for the consumer.
They contain important information.**

NOTES:

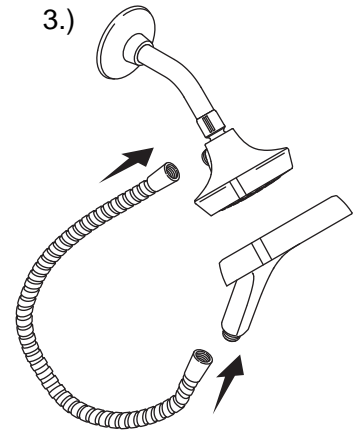
1. Flush the water supply pipes thoroughly to remove debris.
2. An in line water filter must be used with this product.
3. There is a flow controller installed in the shower head inlet. Please take care to ensure it is not damaged by the shower arm male thread during installation.
4. Recommended working pressure: 100 - 500kPa.
5. The highest working pressure for the shower head is 500kPa. If it exceeds 500kPa, a pressure reducer is required.
6. This shower head is intended for high/mains pressure installations. It may not be suitable for use with gravity-fed water heaters, low and unequal pressure supplies, instantaneous water heaters, tempering valves and thermostatic mixing valves.
7. The highest water and environment temperature is 60°C. Please keep spray head away from any heat source as it may get damaged.
8. Observe local plumbing codes.
9. All installations should comply with the relevant requirements of AS/NZS 3500 and AS/NZS 6400.

INSTALLATION

- 1.) If required, remove the existing shower head from shower arm.
- 2.) Apply appropriate thread tape or sealant to the shower arm thread and install shower head.



- 3.) Install hose to shower head and hand shower.
NOTE: Ensure the hose has a supplied rubber washer installed in each end.
- 4.) **INSTALLATION CHECKOUT:** Check for leaks and repair as necessary.

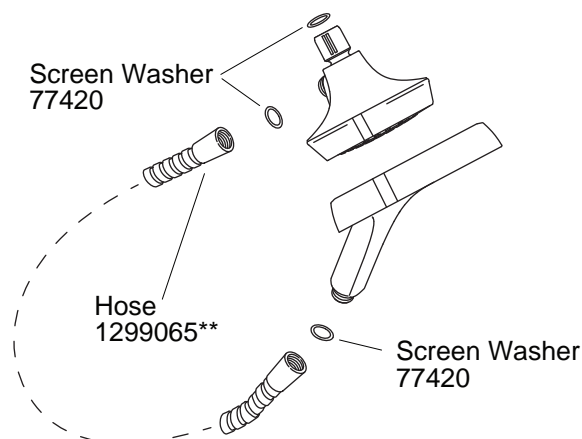


CLEANING INSTRUCTIONS

All Finishes: Clean the finish with mild soap and warm water. Wipe entire surface completely dry with clean soft cloth. Many cleaners may contain chemicals, such as ammonia, chlorine, toilet cleaner etc. which could adversely affect the finish and are not recommended for cleaning.

Do not use abrasive cleaners or solvents on Englefield faucets and fittings.

SPARE PARTS LIST



CONTACT AND WARRANTY INFORMATION

NEW ZEALAND KOHLER NZ LTD

Free Ph: 0800 100 382
Free Fax: 0800 664 488
www.Englefield.co.nz

AUSTRALIA KOHLER CO.

Free Ph: 1 800 ENGLEFIELD
(1 800 364 533)
www.Englefield.com



For warranty information, please visit our website