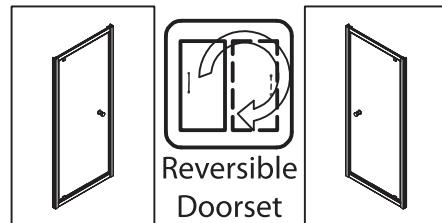


INSTALLATION INSTRUCTIONS



SHOWER | SHOWERWORKS® ALCOVE PIVOT DOOR



BEFORE YOU BEGIN

Before installing the shower please read these instructions carefully to familiarise yourself with the required tools, materials and installation sequences. Please leave these instructions for the consumer after installation. Refer to the separate care and maintenance guide for important care and cleaning information.

Ensure that the shower tray and wall, if applicable, are completely finished prior to installing your shower door and return. Follow all warnings, cautions and instructions contained in this guide.



SAFETY

1. ENGLEFIELD strongly recommends that a minimum of TWO persons install this enclosure due to the weight of the door panels.
2. Toughened safety glass cannot be cut. Risk of injury or product damage.
3. Wear protective footwear when lifting panels.
4. Wear safety glasses when drilling.

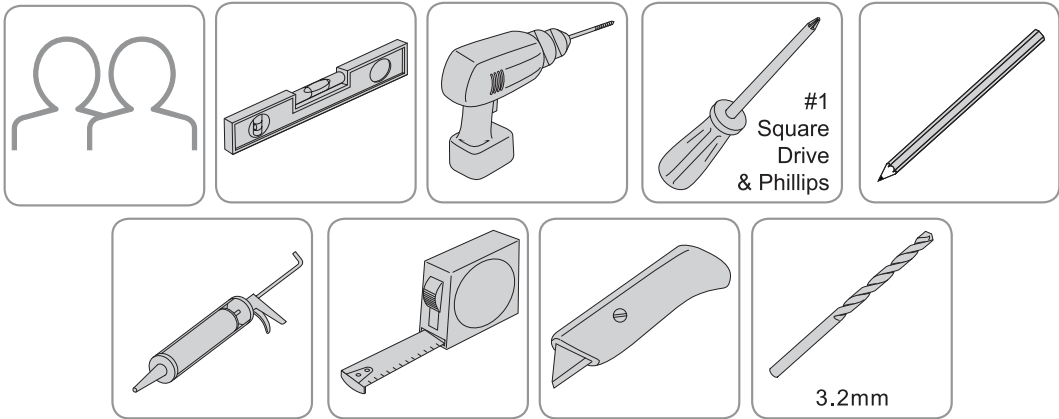


ATTENTION

1. The wall retainers must be installed onto a waterproof, vertical and flat wall surface. Failure to do so will result in an unsatisfactory seal, which may cause property damage. The wall inclination (out of squareness) is recommended to be out by no more than **+/- 4mm/m**.
2. Please install this door onto an ENGLEFIELD Quick - Fit® Low Profile shower tray only, unless installing directly onto tiled walls and floor.
3. Care must be taken when drilling into walls and floors to avoid any hidden pipes or wires.
4. It is the responsibility of the INSTALLER to ensure that the installation complies with council and or local authority bylaws.

Instructions, drawings, and diagrams contained in this manual present information available at the time of printing. Although every attempt has been made to keep them up-to-date, Englefield reserves the right to implement product changes without further notice.

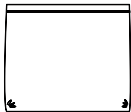
TOOLS AND MATERIALS REQUIRED



PARTS IDENTIFICATION

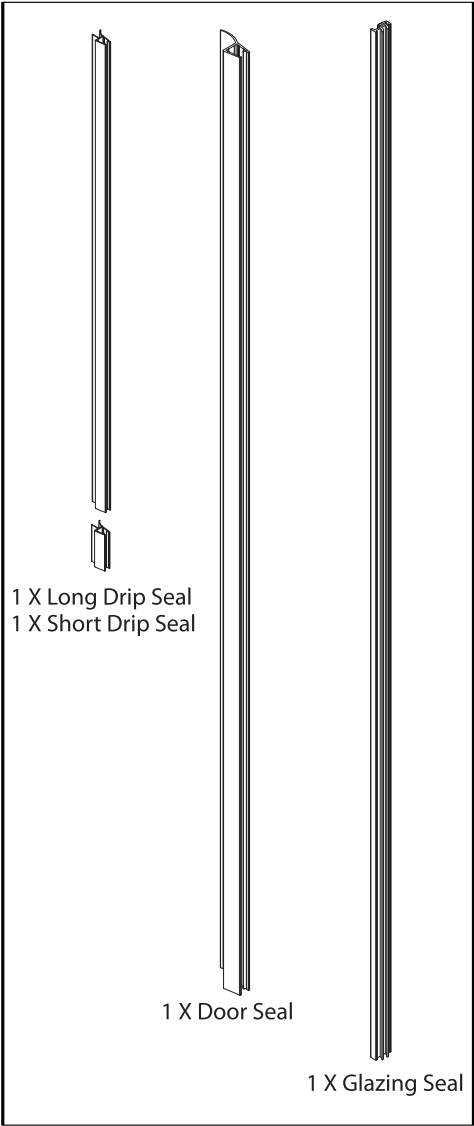
2 X Door Wall channel

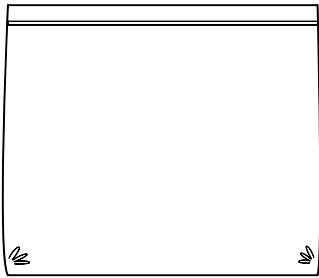
1X Door



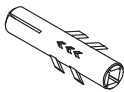


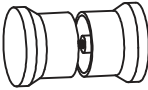
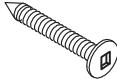

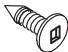


1 X Fittings Kit
(contents on pg 3)

1 X Seal Pack





1 x Fittings Kit

	8X Wall plugs		2X Screw cap
	14X Screw washer		1X Handle assembly
 ST4X30	8X Fixing screws		14X Screw cap
 ST4X10	6X Screws		2X Seal for pivot bracket
4MM 	1X Hex Key		

CONSTRUCTION REQUIREMENTS

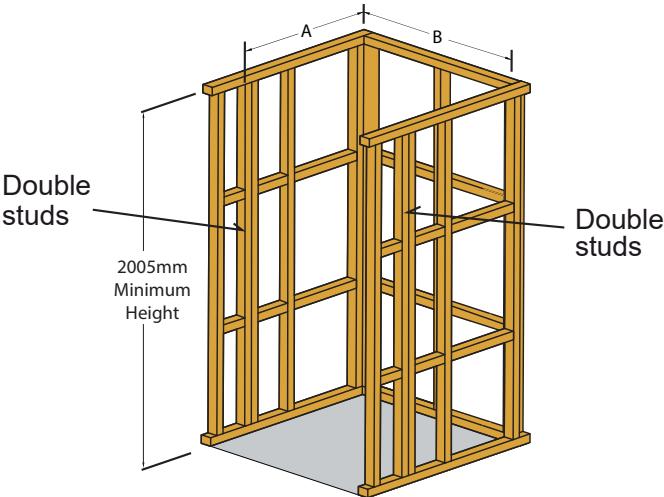


ATTENTION

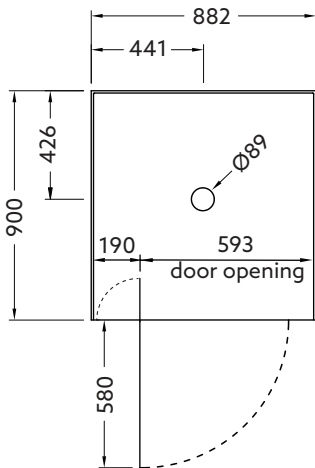
Due to the weight of the glass panels Englefield strongly recommends constructing double studs (as below) to fix the wall retainers to.

Size	DIM "A"	DIM "B"
900 x 900	N/A	884
1000 x 1000	N/A	984

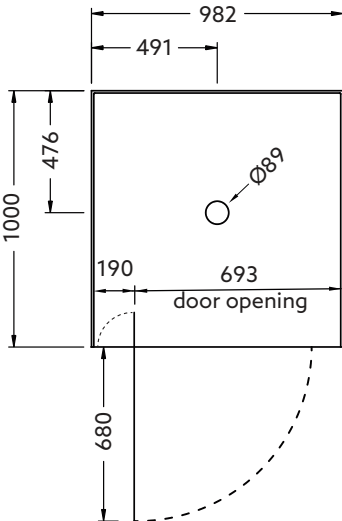
NOTE: This setup allows for the use of standard 10mm wall board. A thicker wall board could make the recess too narrow for the door system.



Showerworks ALC 9x9



Showerworks ALC 10x10

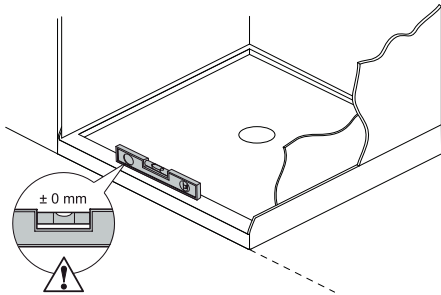


INSTALLATION REQUIREMENTS

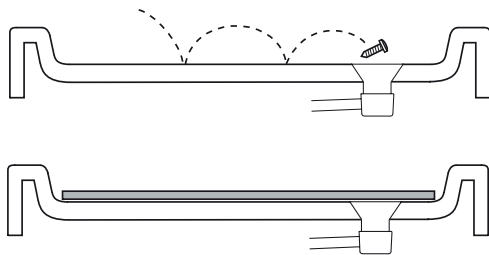
Tray: For tray installation refer to the instructions supplied with the tray.

Wall: For wall installation refer to the instructions supplied with the wall.

INSTALLATION



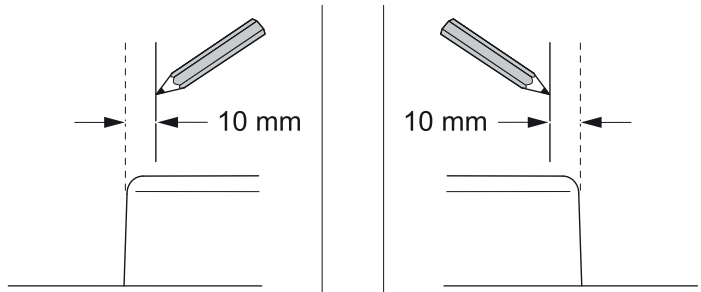
Caution: Ensure tray or tiled floor is level & walls are vertical & square.

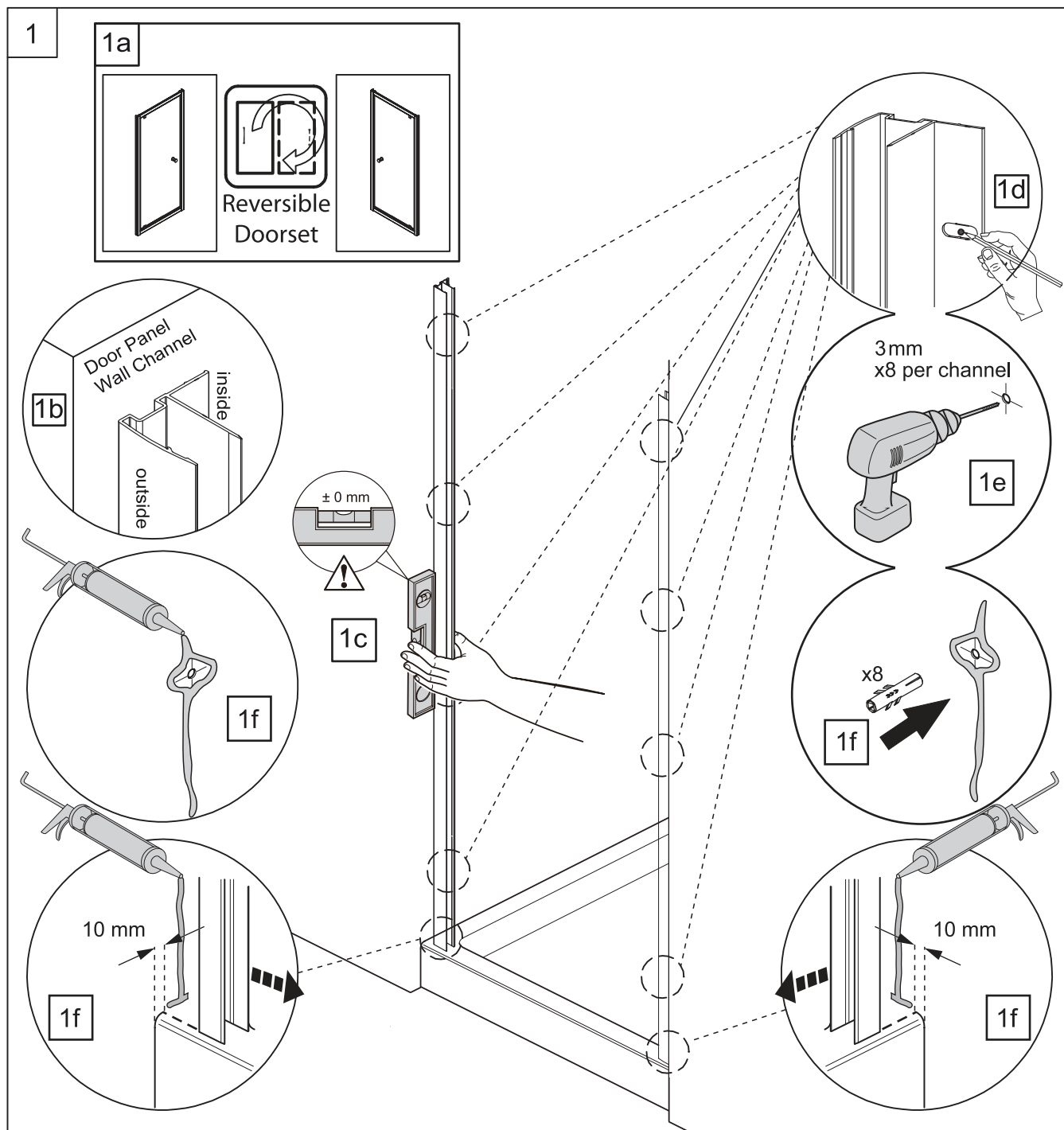


Tip: Cover the waste to prevent the loss of small parts. If installing onto a tray protect the tray surface during installation.

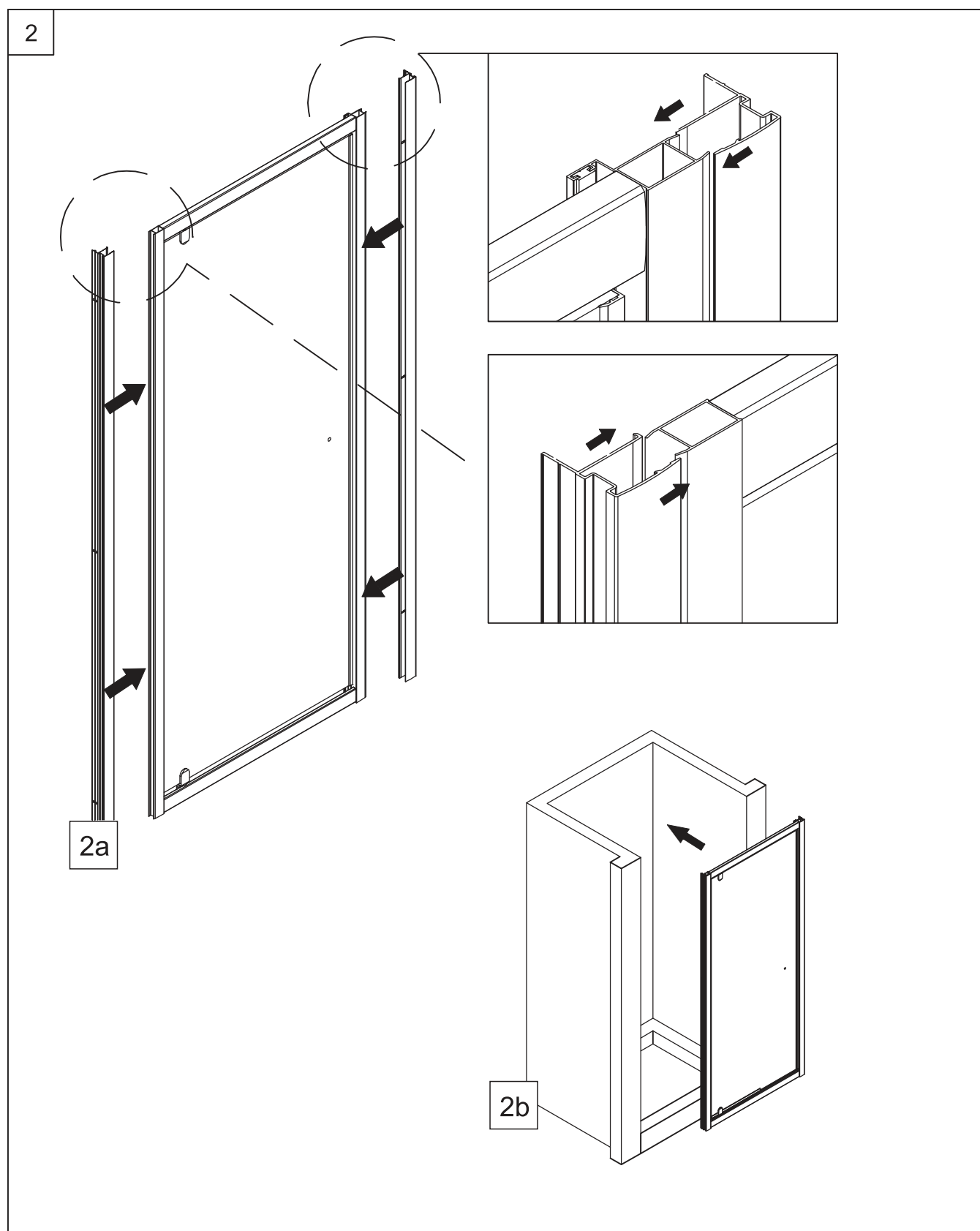
(a) Mark the locations of the wall retainers.

- Mark 10mm in from top edge of tray.

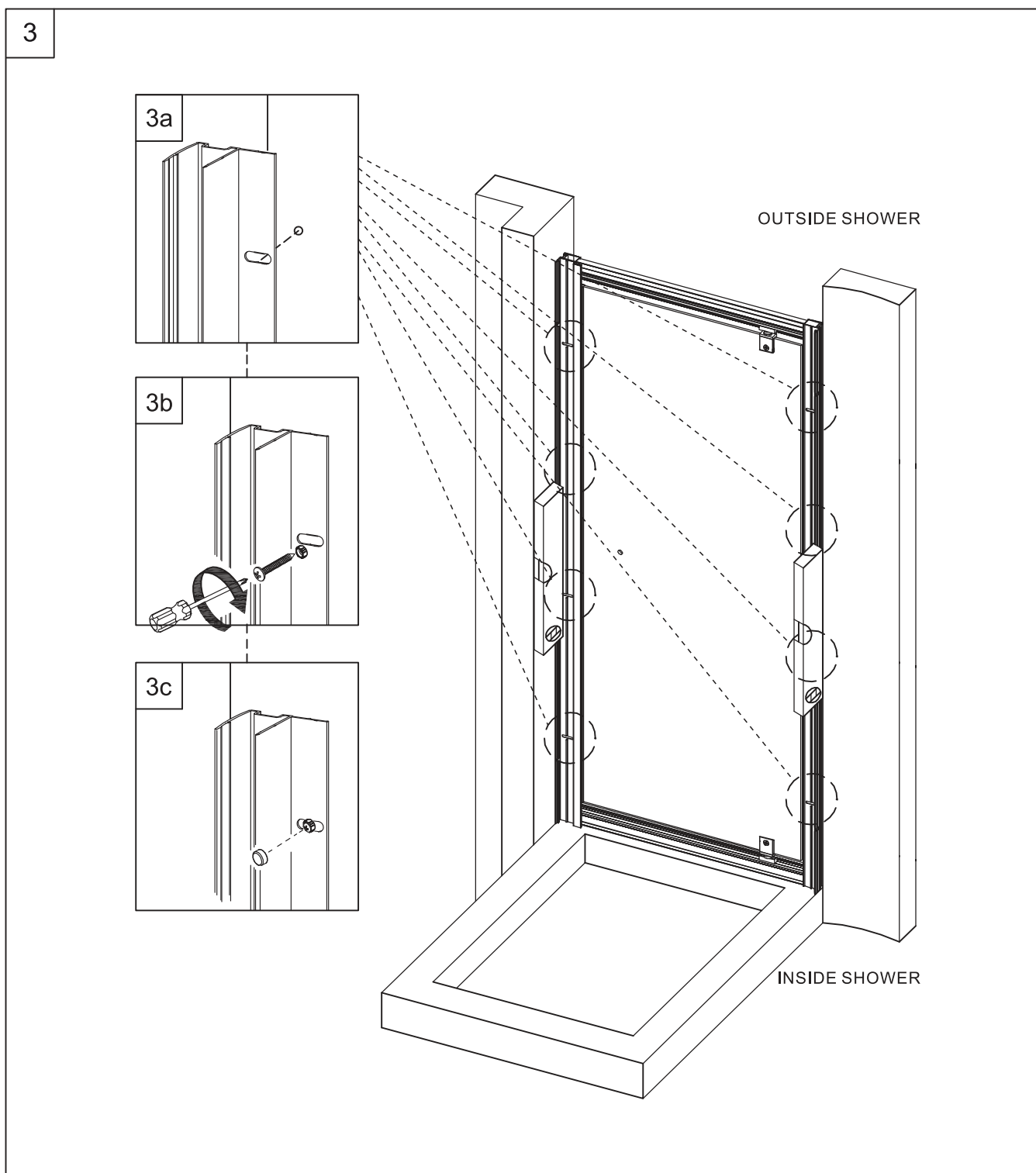




- (a) This enclosure is reversible. Select which side the door panel to open from
- (b) Put the profile next to the wall and distinguish the inside and outside. The flange with predrilled holes should face inside the enclosure.
- (c) Place the wall channels up, 10mm in from tray edge. Using a level, make sure that the channels are upright.
- (d) Mark the position of the fixing holes then remove the channels.
- (e) Drill all holes with a 3 mm bit. For other types of wall structure, alternative fixings may be required (not supplied).
- (f) Apply sealant along the length of the wall and at the bottom where the wall channel will be placed, including the top of the tray (as shown step 1f).

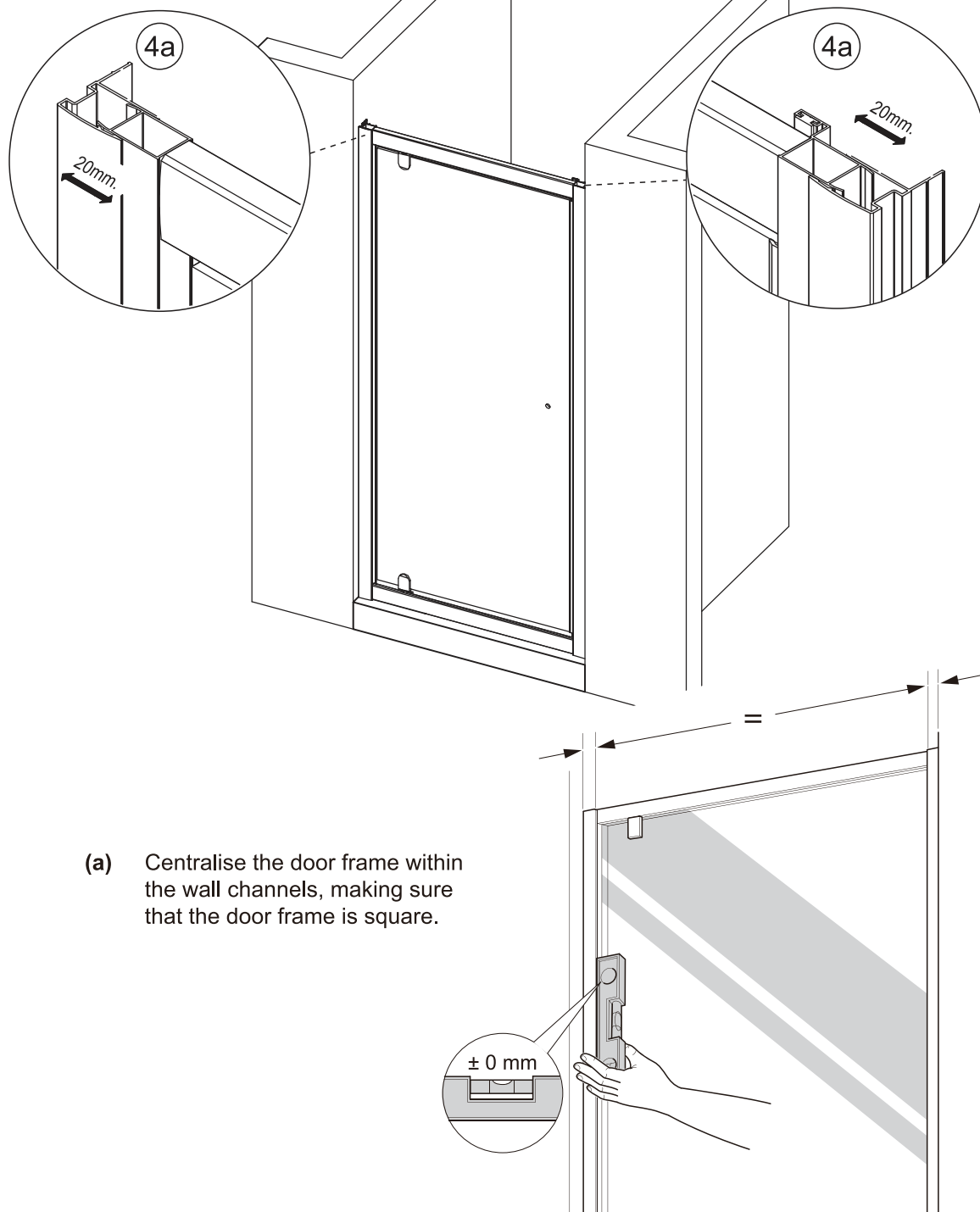


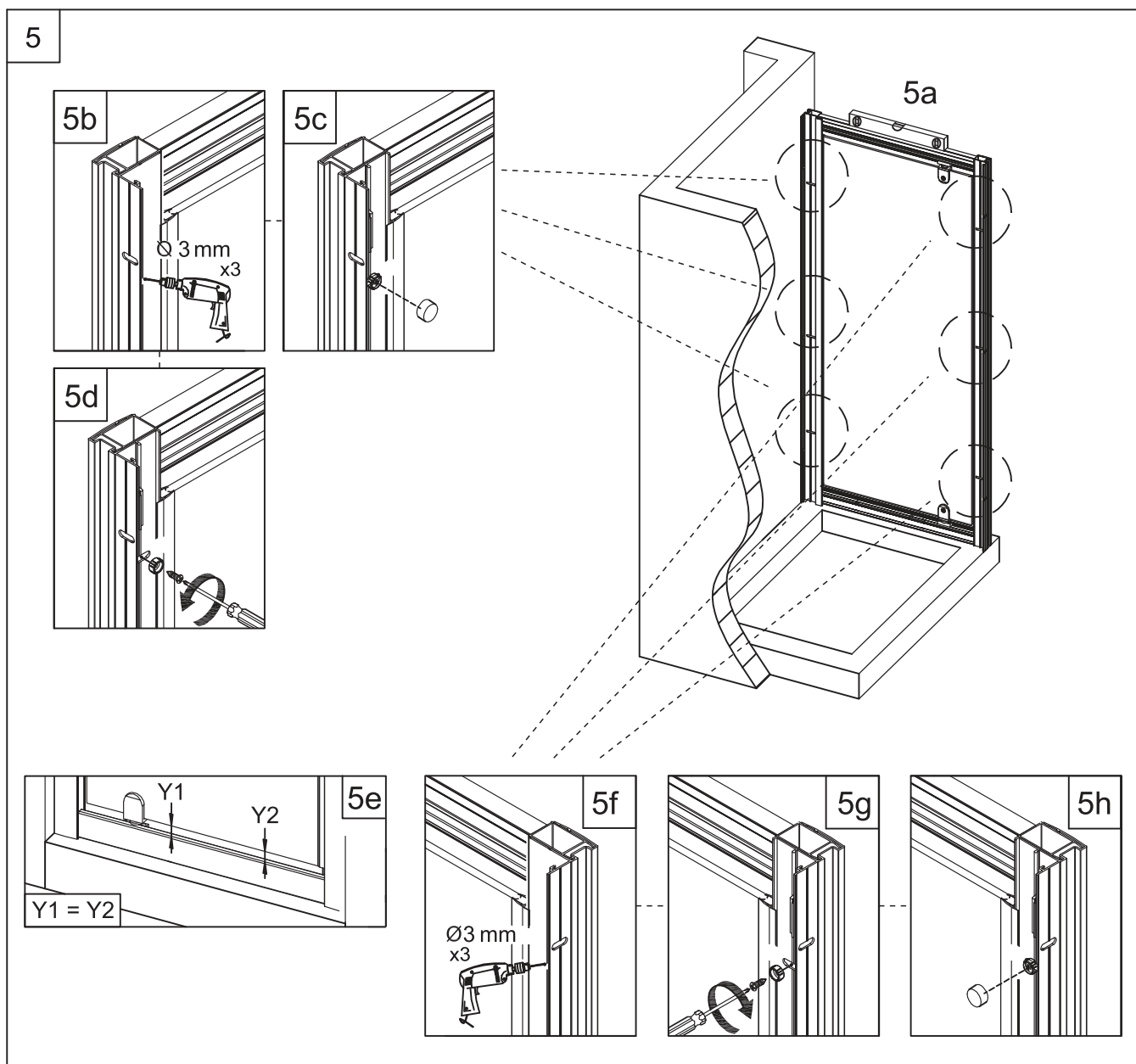
- (a) Fit the wall channel onto the door panel.
- (b) Ensure the door is opening from the side chosen.
Place the assembled door onto the tray in the correct position.



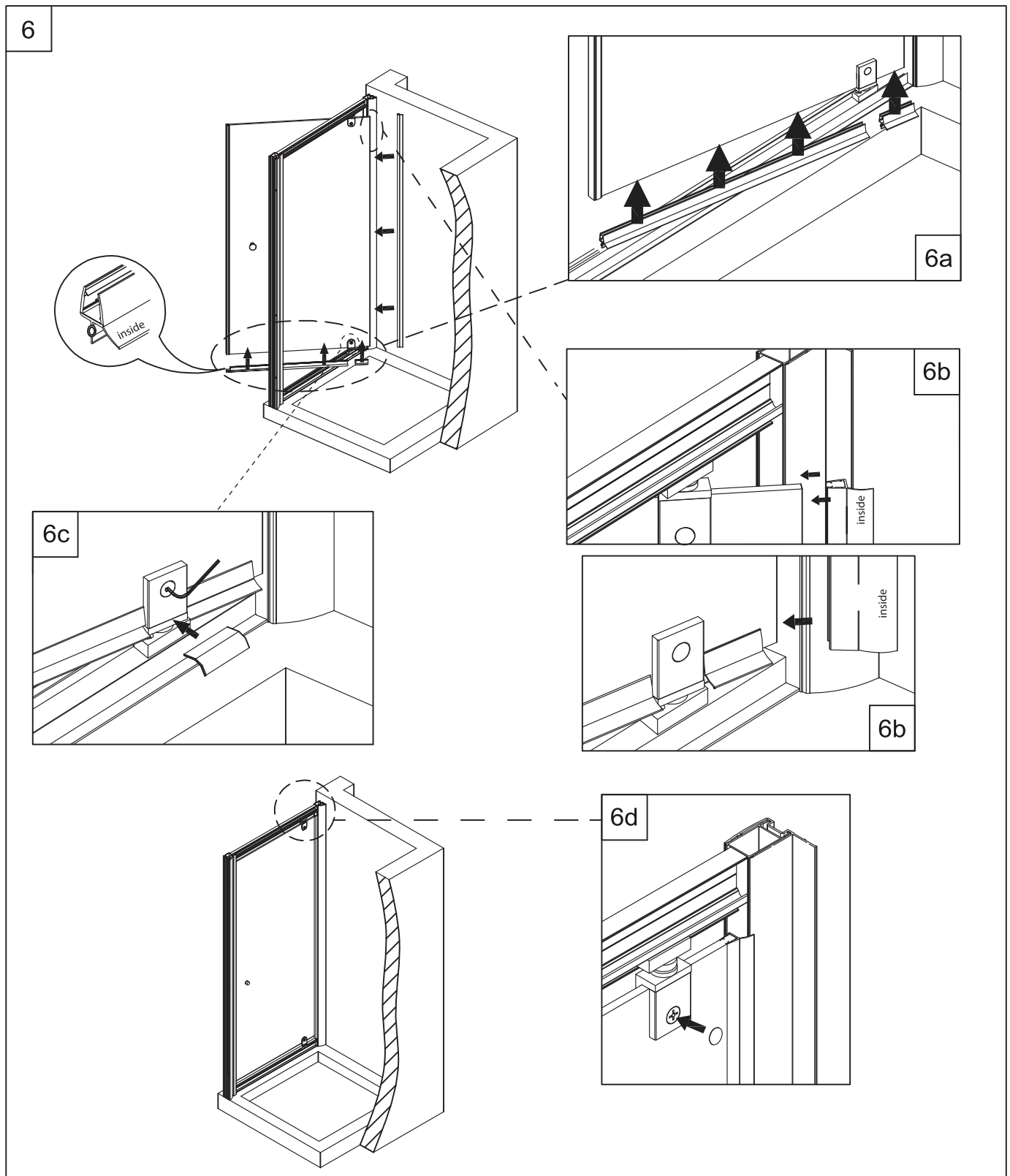
- (a) Ensure the Panel is in the correct position on the tray, the door is opening from the chosen side, the all channels are aligned with the fixing holes and the whole assembly is plumb.
- (b) Place the washer supplied over the fixing screw, insert into fixing hole and tighten. Repeat for all fixing holes. The whole assembly must remain plumb.
- (c) Place on the screw cover caps.

4

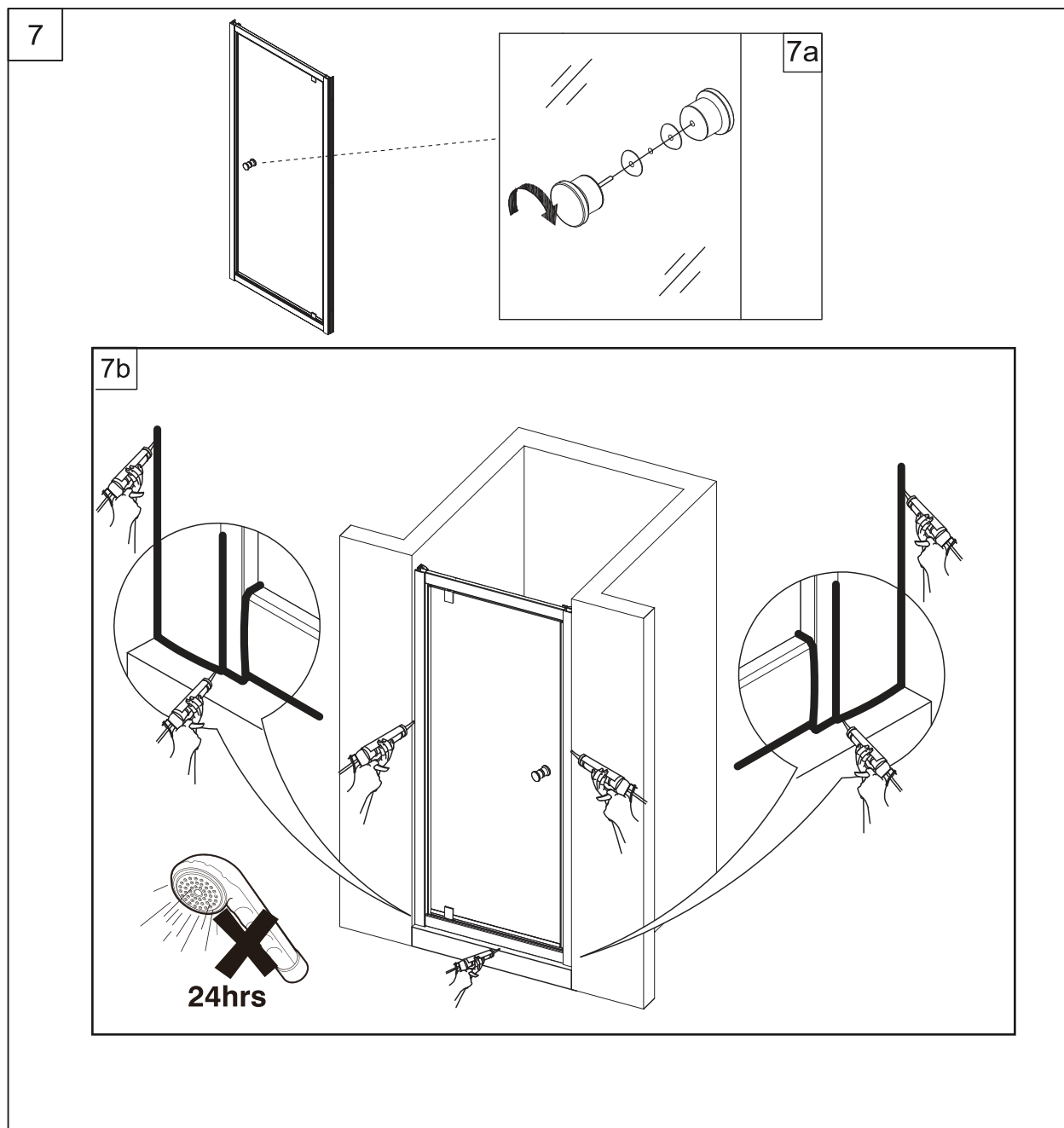




- (a) Use a level to ensure that the frame is square, and the door panel is sitting level(5a+5e).
- (b) From the inside of the enclosure, drill through the wall channel(on the handle side) into the door frame. Be careful not to pierce all the way through or damage any other components.
- (c) Place a screw washer over the assembly screw. Insert screw with washer into hole and tighten.
- (d) Place the screw cover caps on & repeat steps for all 3 screws in wall channel.
- (e) Ensure the door panel is sitting level.
- (f)(g)(h) Repeat on the hinge side wall channel.



- (a) Install the bottom seal on the door, angled fin facing inward.
- (b) Install the vertical door seal, long fin facing inward. The bottom of the seal should just miss the lower rail when opening and closing the door.
- (c) Carefully loosen the lower pivot plate, insert the pivot seal then re-tighten the plate.
- (d) Insert the pivot cover caps top and bottom.



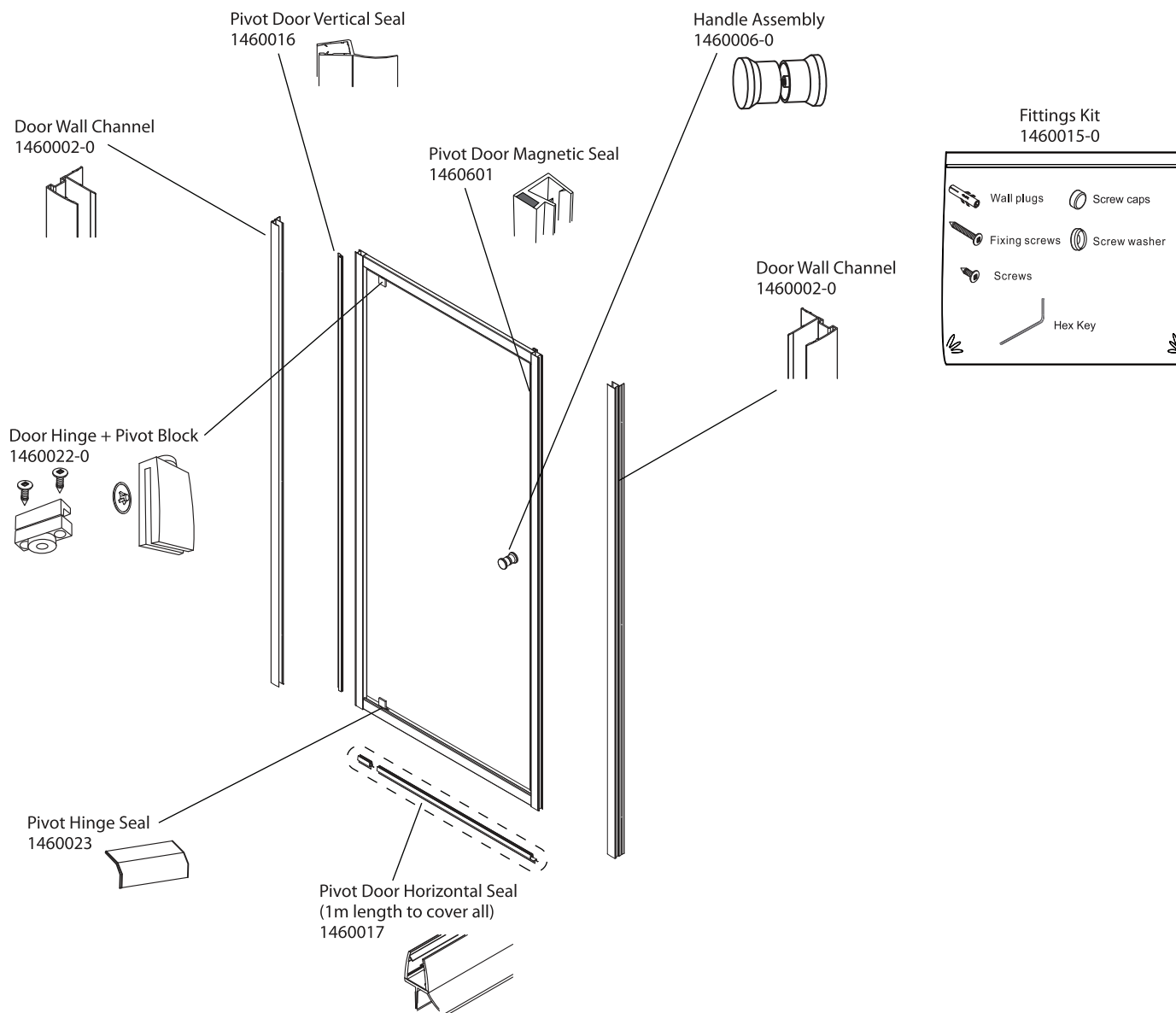
- (a)** Install the door handles, twisting clockwise to tighten.
- (b)** Apply sealant along the outside surfaces of the enclosure. Do not seal from inside. Allow the silicone sealant to cure for 24 hours before use.

Installation Complete.

CLEANING AND MAINTENANCE INSTRUCTIONS

Please refer to the homeowners guide and our website for cleaning instructions.

SPARE PARTS



CONTACT AND WARRANTY INFORMATION

NEW ZEALAND
Kohler New Zealand Limited

0800 100 382
info@englefield.co.nz
englefield.co.nz

AUSTRALIA

englefield.com

