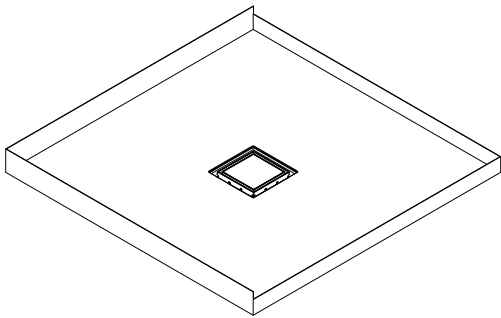


SHOWER TRAY

Stainless Steel Tile Over Shower Tray- 900x900mm, 1000x1000mm

The Englefield Stainless Steel Tile Over Shower Trays provide a superior watertightness, and are suitable for both on floor or drop in installation.



Features/Option: - Size (nominal): 900x900mm , 1000x1000mm.
-25 mm tilig bead.

Material/Finish:
-1.2 mm Stainless Steel 304.

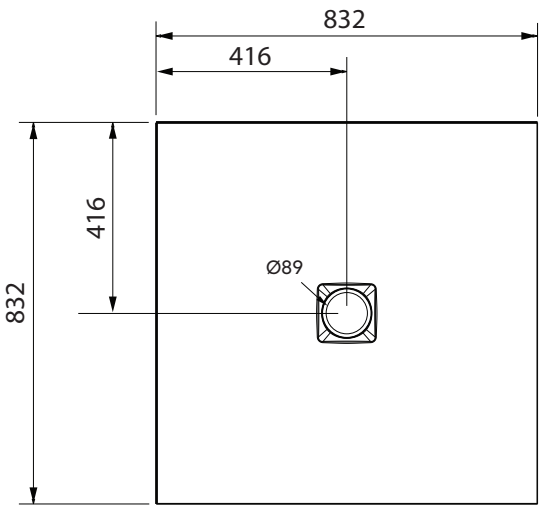
Included Components: -SS fabricated Tray shell, SS Cap, Neoprene Washer.

Required Components: -Easy Clean Trap 40mm -Tile.

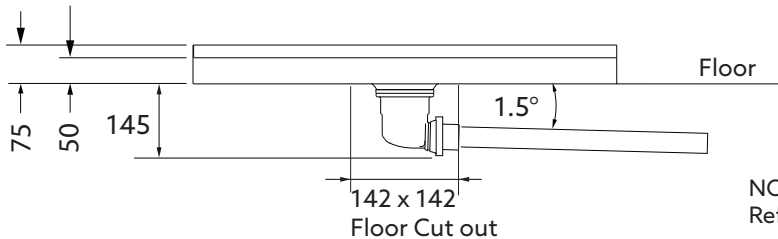
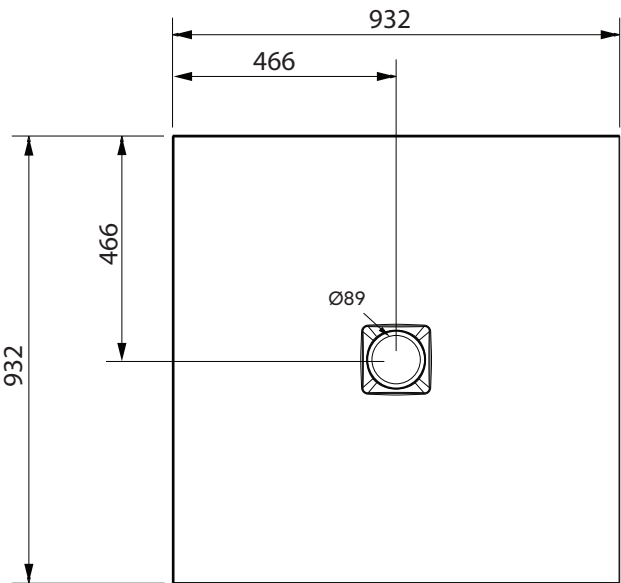
Weight: -900 x 900 Tray: 9 kg
1000 x 1000 Tray: 11 kg

Note: Shower Block not included.

900 x 900mm



1000 x 1000mm



NOTE:
Refer to the Trap specifications on the next page.

Product Codes:

Tile Over Shower Tray 900 x 900	707630A-NA
Tile Over Shower Tray 1000 x 1000	707631A-NA
Easy-Clean Trap 40mm Tile	702417A-BL



New Zealand
Kohler New Zealand Limited
0800 100 382
info@englefield.co.nz
englefield.co.nz

Australia

englefield.com

All measurements shown.
are in millimetres.
Sizes are approximate.

September 2023
1573782-A04-A

SHOWER TRAY ACCESSORIES

EASY CLEAN TRAP 40 mm - TILE

Designed for the Englefield Stainless Steel Tile Over Shower Tray.

The lid and basket can be quickly removed, cleaned and clicked back into place.

The Lid and The Tile Rim are designed to assist with tiles application and drainage of the residual water from under the tiles.

Material/Finish:

-Lid and Tile Rim: material: ABS
colour: Black

-Trap: material: Polypropylene (body)
PVC (outlet)

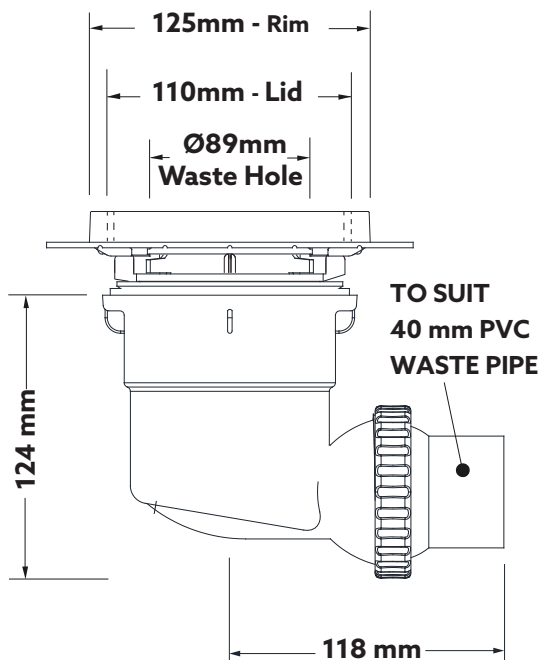
Features :

- Tile Rim to assist with tiling
- Removable (tiled) Lid for easy cleaning
- Combination Trap/Waste Outlet
- Suitable for 89 mm diameter waste hole
- Trap with 75 mm water seal
- Removable basket for easy cleaning
- 40 mm outlet. Can be rotated to achieve the optimal pipe fall of 25 mm per metre.
- Flow rate of 50 l/min
- AS 2887 compliant



Weight:

0.5 kg



For the outlet waste pipe:

- required minimum continuous fall of 1.5 (25 mm /m)
- avoid bends and restrictions for 1.5 metres from trap outlet.
- do not connect to an existing trap.

Product Code:

7022417A-BL

NOTE:
Not sold separately.

