

INSTALLATION INSTRUCTIONS



Trusted in New Zealand Since 1982

SHOWER

SHOWERWORKS™ Round Sliding



Englefield has a history of making superb showers and their popularity is testament to their quality and affordability.

It's the details that Englefield cares about - from pioneering the latest technology, to innovative design, it's all to make your showering experience the very best it can be.



Note: Tapware and accessories not included.

BEFORE YOU BEGIN

Before installing the shower please read these instructions carefully to familiarise yourself with the required tools, materials and installation sequences. Please leave these instructions for the consumer after installation. Refer to the separate care and maintenance guide for important care and cleaning information.

Ensure that the shower tray and wall, if applicable, are completely finished prior to installing your shower door and return. Follow all warnings, cautions and instructions contained in this guide.



SAFETY

1. ENGLEFIELD strongly recommends that a minimum of TWO persons install this enclosure due to the weight of the door panels.
2. Toughened safety glass cannot be cut. Risk of injury or product damage.
3. Wear protective footwear when lifting panels.
4. Wear safety glasses when drilling.

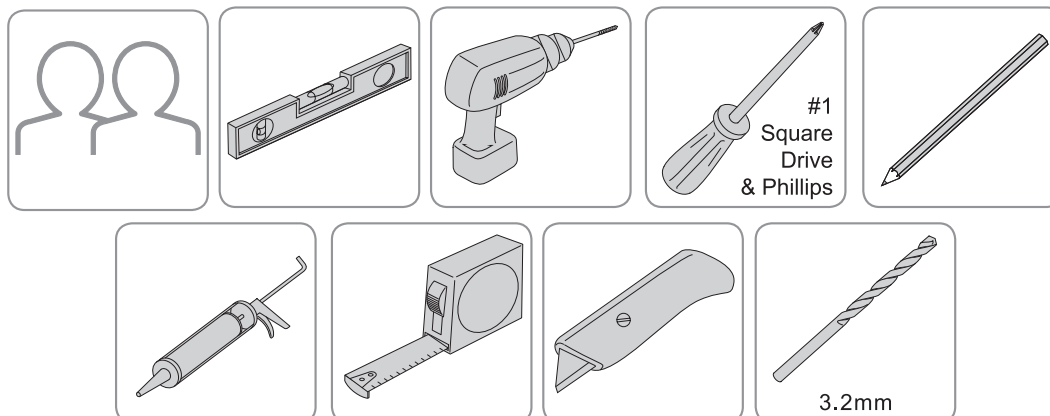


ATTENTION

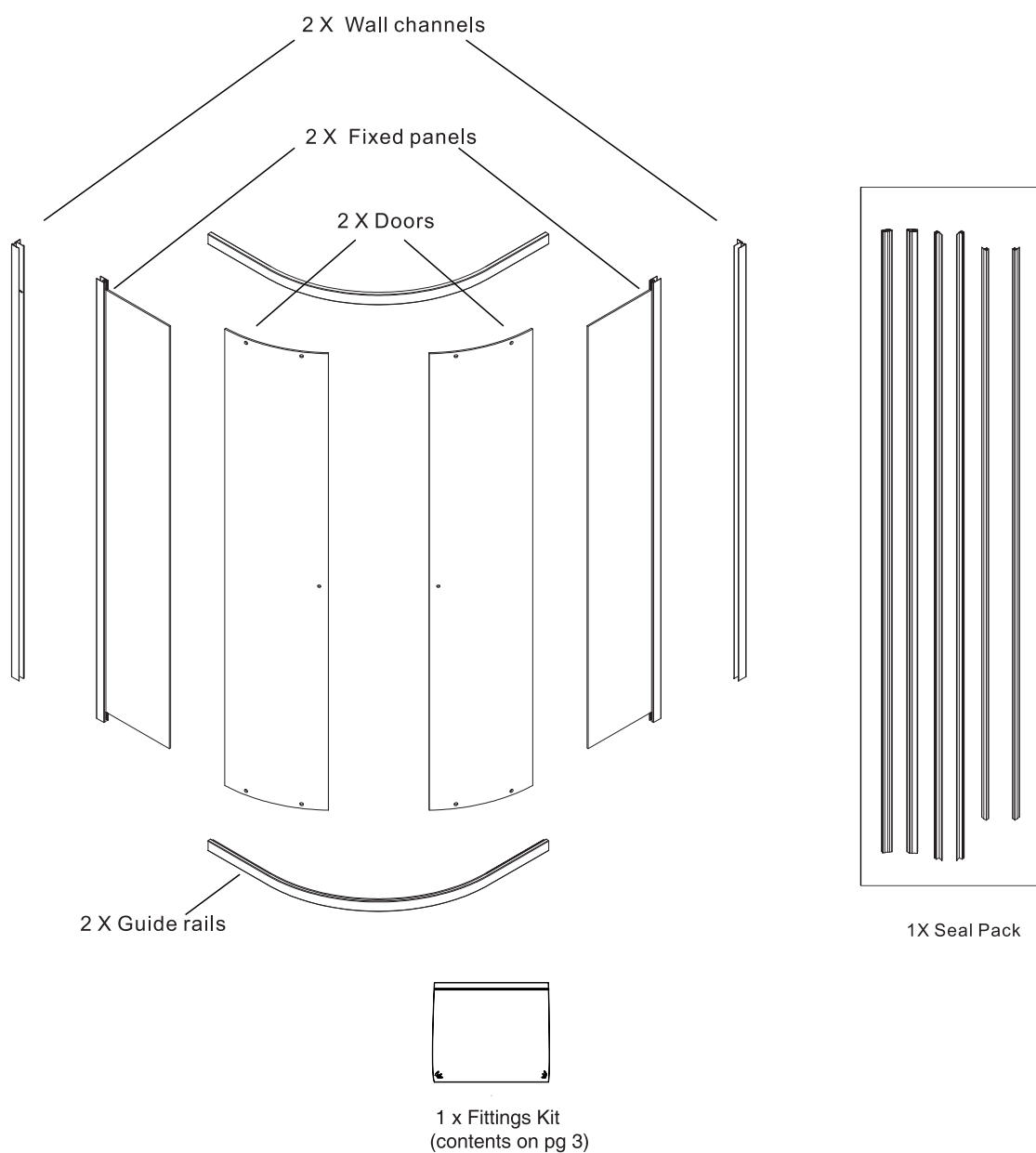
1. The wall retainers must be installed onto a waterproof, vertical and flat wall surface. Failure to do so will result in an unsatisfactory seal, which may cause property damage. The wall inclination (out of squareness) is recommended to be out by no more than **+/- 4mm/m**.
2. Please install this door onto an ENGLEFIELD Quick - Fit® Low Profile shower tray only.
3. Care must be taken when drilling into walls and floors to avoid any hidden pipes or wires.
4. It is the responsibility of the INSTALLER to ensure that the installation complies with council and or local authority bylaws.

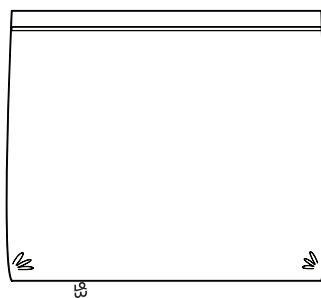
Instructions, drawings, and diagrams contained in this manual present information available at the time of printing. Although every attempt has been made to keep them up-to-date, Englefield reserves the right to implement product changes without further notice.

TOOLS AND MATERIALS REQUIRED

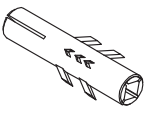
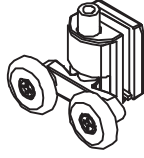

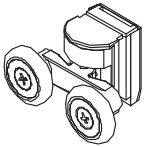
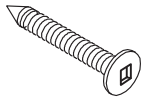
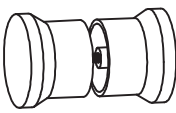
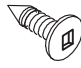




PARTS IDENTIFICATION





1 x Fittings Kit

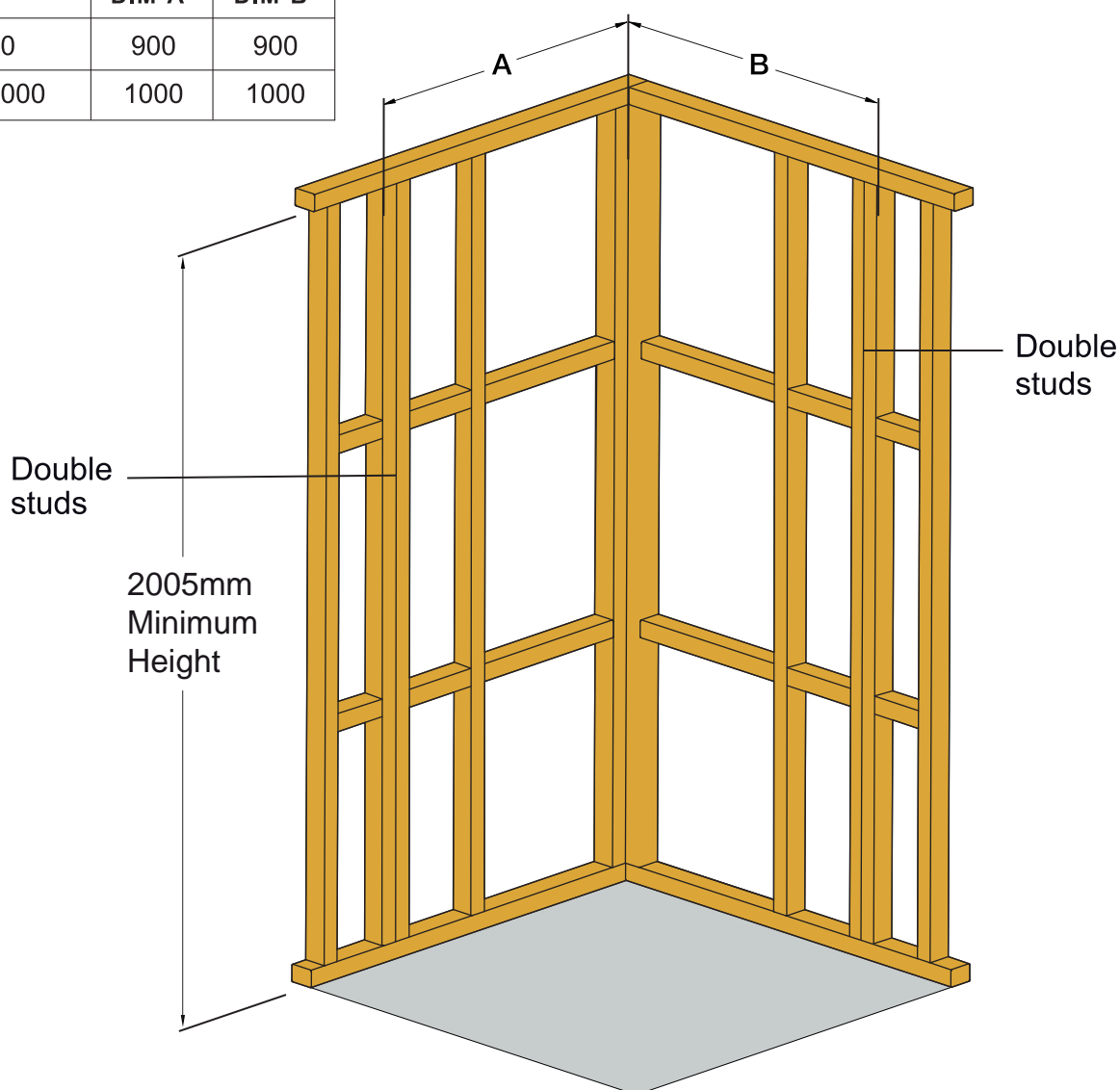
	8X Wall plugs		4X Top roller
	14X Screw washer		4X Bottom roller
 ST4X30	8X Fixing screws		2X Handle assembly
 ST4X10	6X Assembly Screws		4X Cap for glass clip
	14X Screw cap		

CONSTRUCTION REQUIREMENTS

**ATTENTION**

Due to the weight of the glass panels Englefield strongly recommends constructing double studs (as below) to fix the wall retainers to.

Size	DIM "A"	DIM "B"
900 x 900	900	900
1000 x 1000	1000	1000



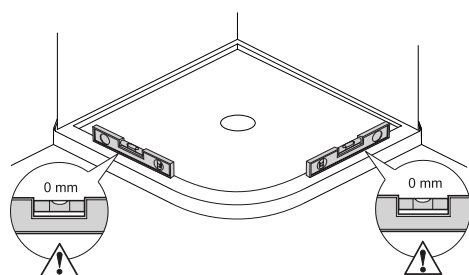
INSTALLATION REQUIREMENTS

Tray: For tray installation refer to the instructions supplied with the tray.

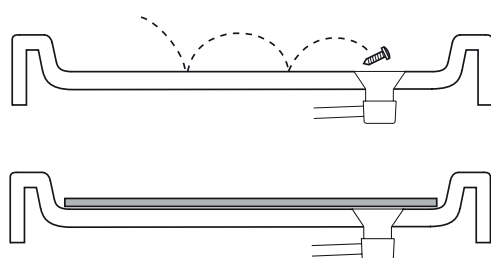
Wall: For wall installation refer to the instructions supplied with the wall.

- Proceed to Door and Return Installation.

INSTALLATION



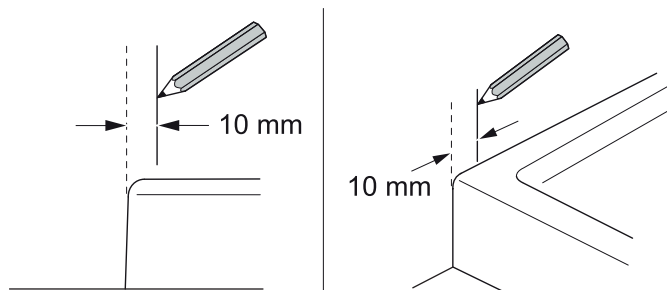
Caution: Ensure tray is level & walls are vertical & square.



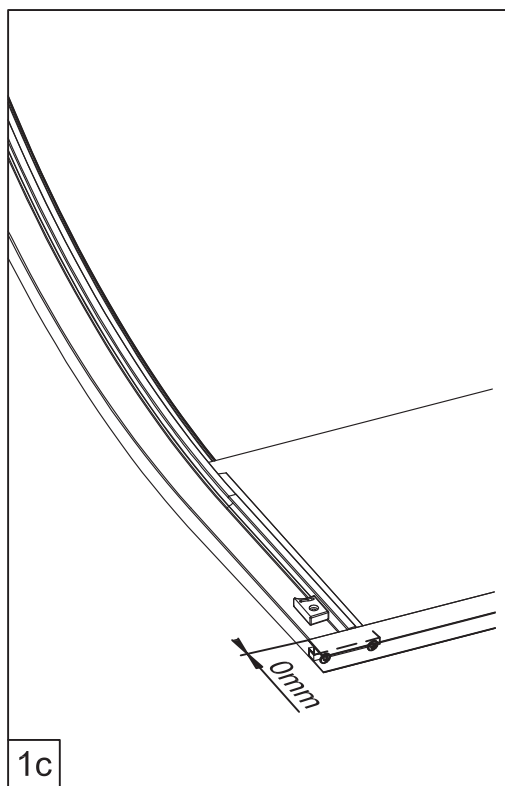
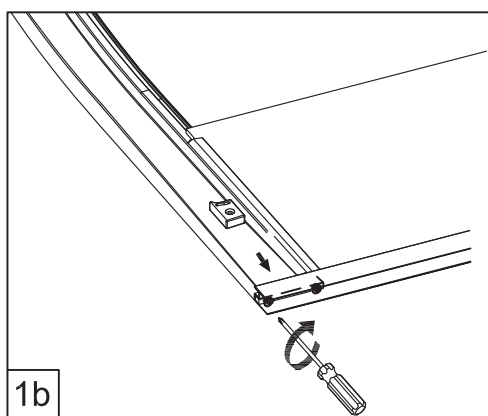
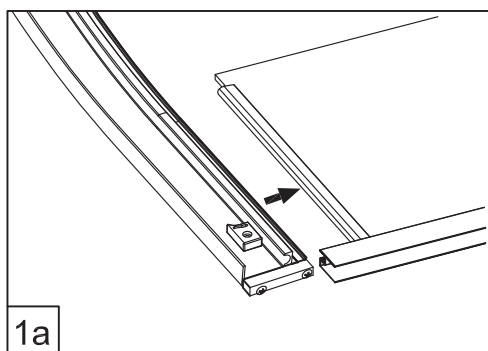
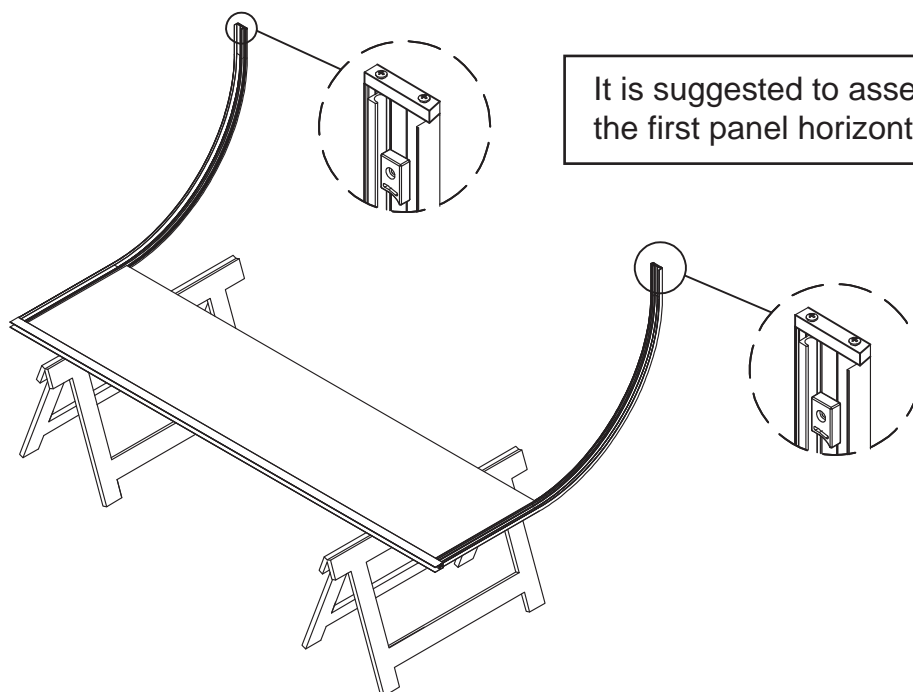
Tip: Cover the waste to prevent the loss of small parts. If installing onto a tray protect the tray surface during installation.

(a) Mark the locations of the wall retainers.

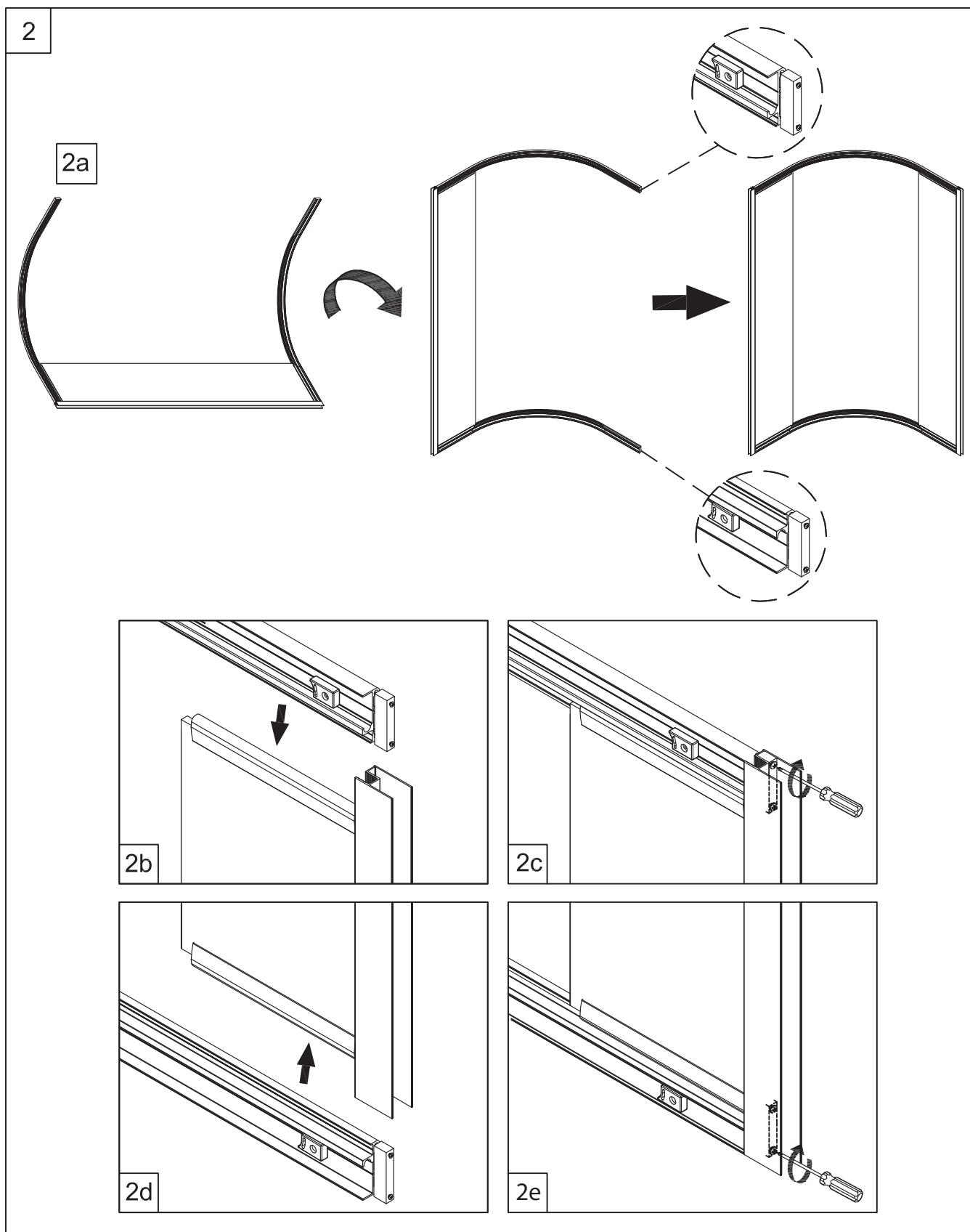
- Mark 10mm in from top edge of tray.



1

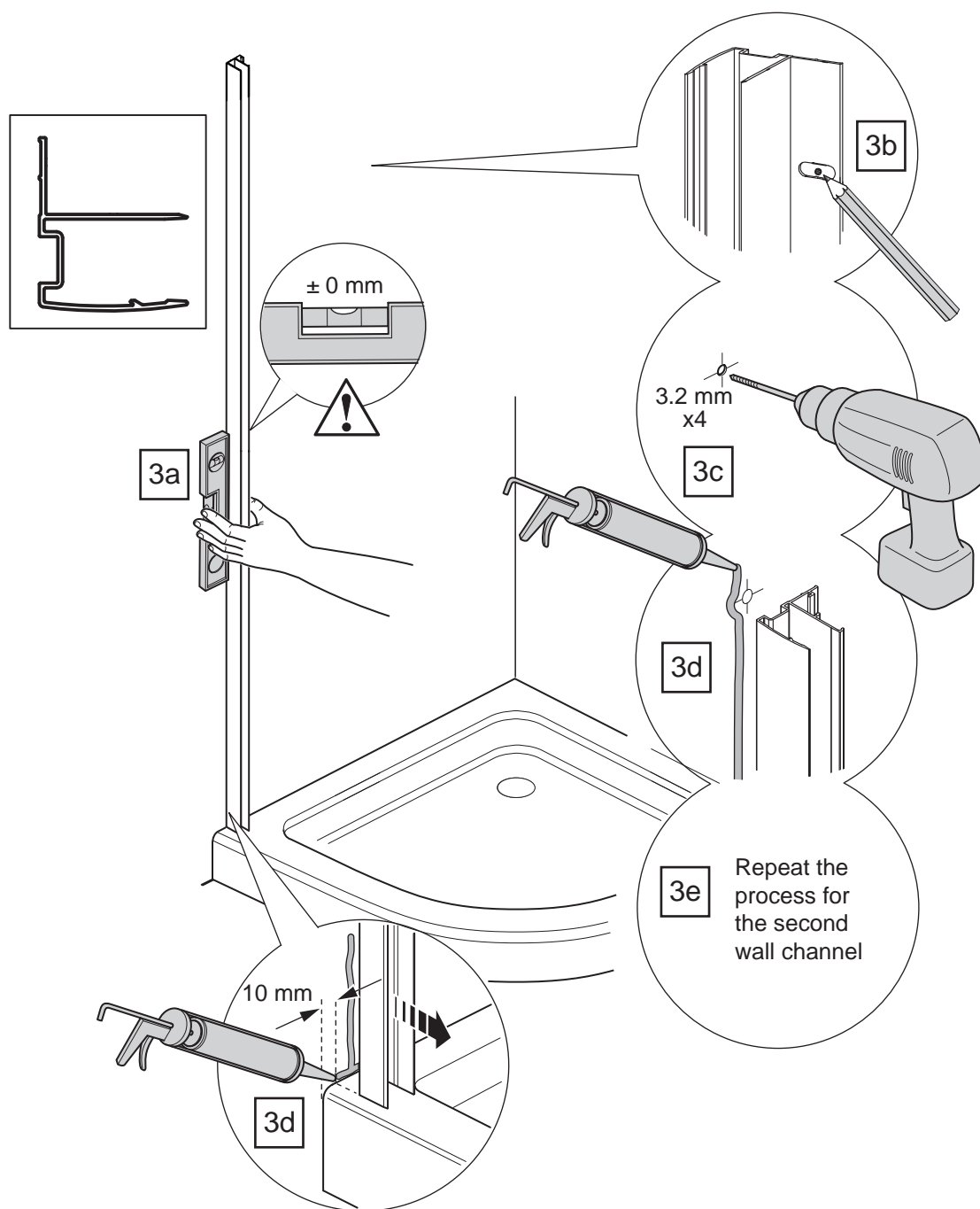


- (a)** Ensure the fixing brackets at the end of rails are in place, with screws slightly loose. Assemble the rail and glass return panel.
- (b)** Tighten the fixing bracket screws at both ends of the glass panel.
- (c)** Ensure there is no gap between the vertical post and horizontal rail.



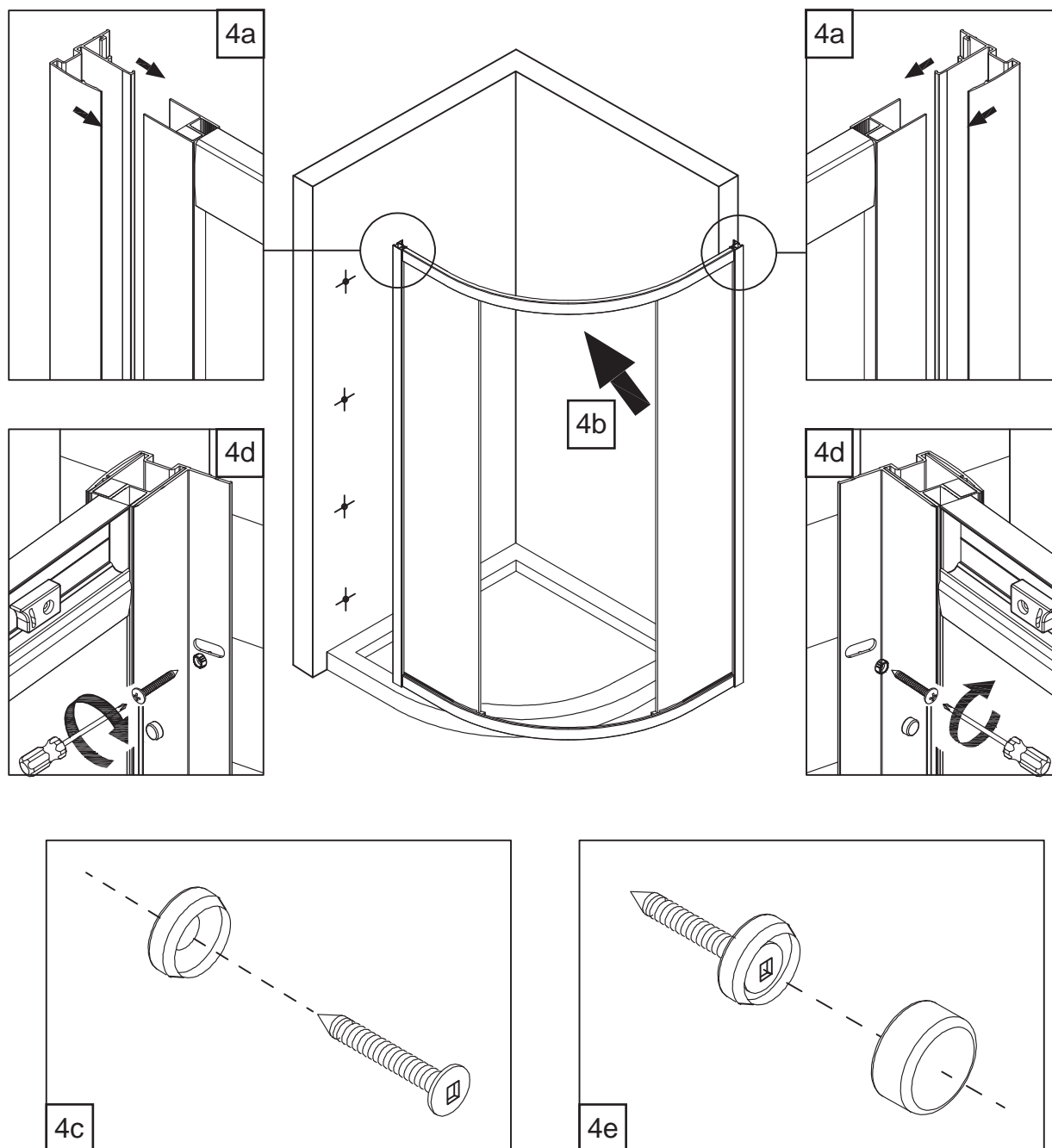
- (a)** Carefully rotate the assembly to be upright. Support the frame as required.
- (b)** Position the top rail over the return panel & **(c)** tighten the fixing bracket screws.
- (d)** Position the return panel into the bottom rail & **(e)** tighten the fixing bracket screws.

3



- (a)** Place the wall channels up, 10mm in from tray edge. The flange with pre-drilled holes should face inside the enclosure. Using a level, make sure that the channel is upright.
- (b)** Mark the position of the fixing holes down the inner flange, then remove the channel.
- (c)** Drill with a 3.2mm bit. For other types of wall structure, alternative fixings may be required (not supplied).
- (d)** Apply silicone sealant along the length of the wall and at the bottom where the wall channel will be placed, including the top of the tray.
- (e)** Repeat the process for the other wall channel.

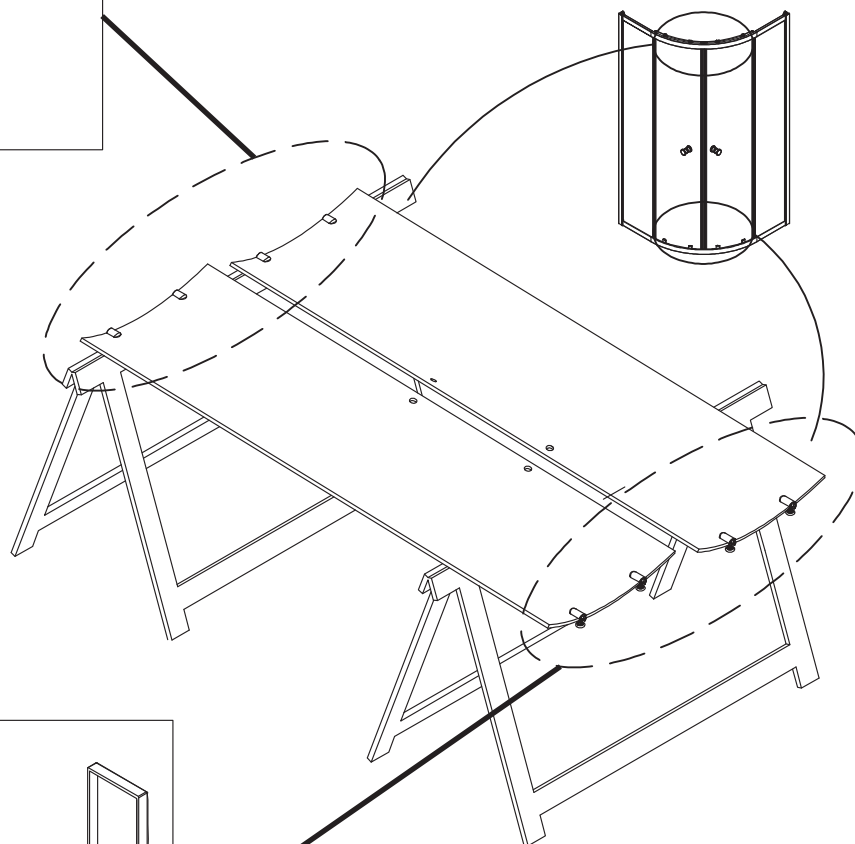
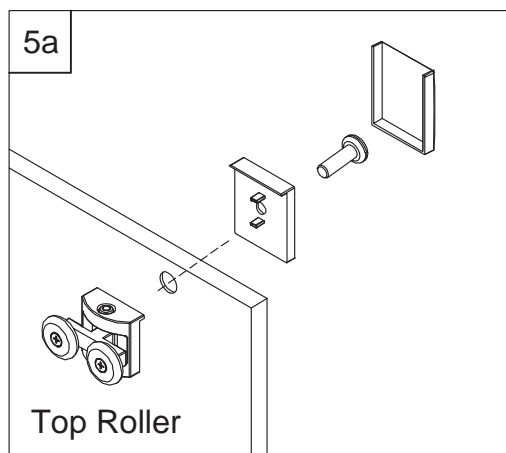
4



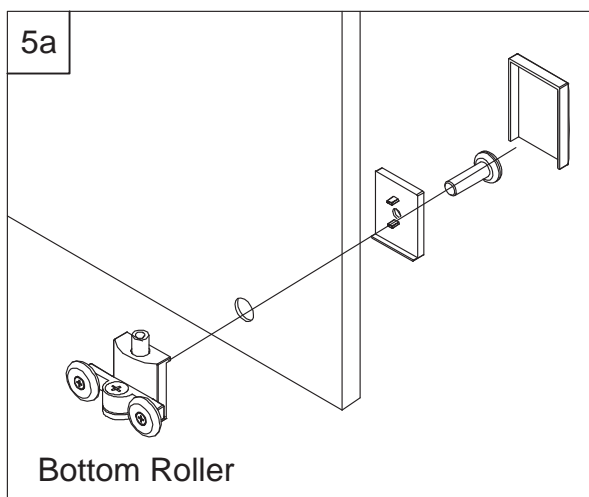
- (a)** Position the wall channels back on the assembled shower frame. The flange with pre-drilled holes should face inside the shower enclosure.
- (b)** Carefully lift the entire frame into position on the tray and align with the wall holes.
- (c)** Place a screw washer over the fixing screw.
- (d)** Insert screw with washer into fixing hole and tighten. Repeat for all 8 fixing screws.
- (e)** Place the screw cover caps on.

5

5a



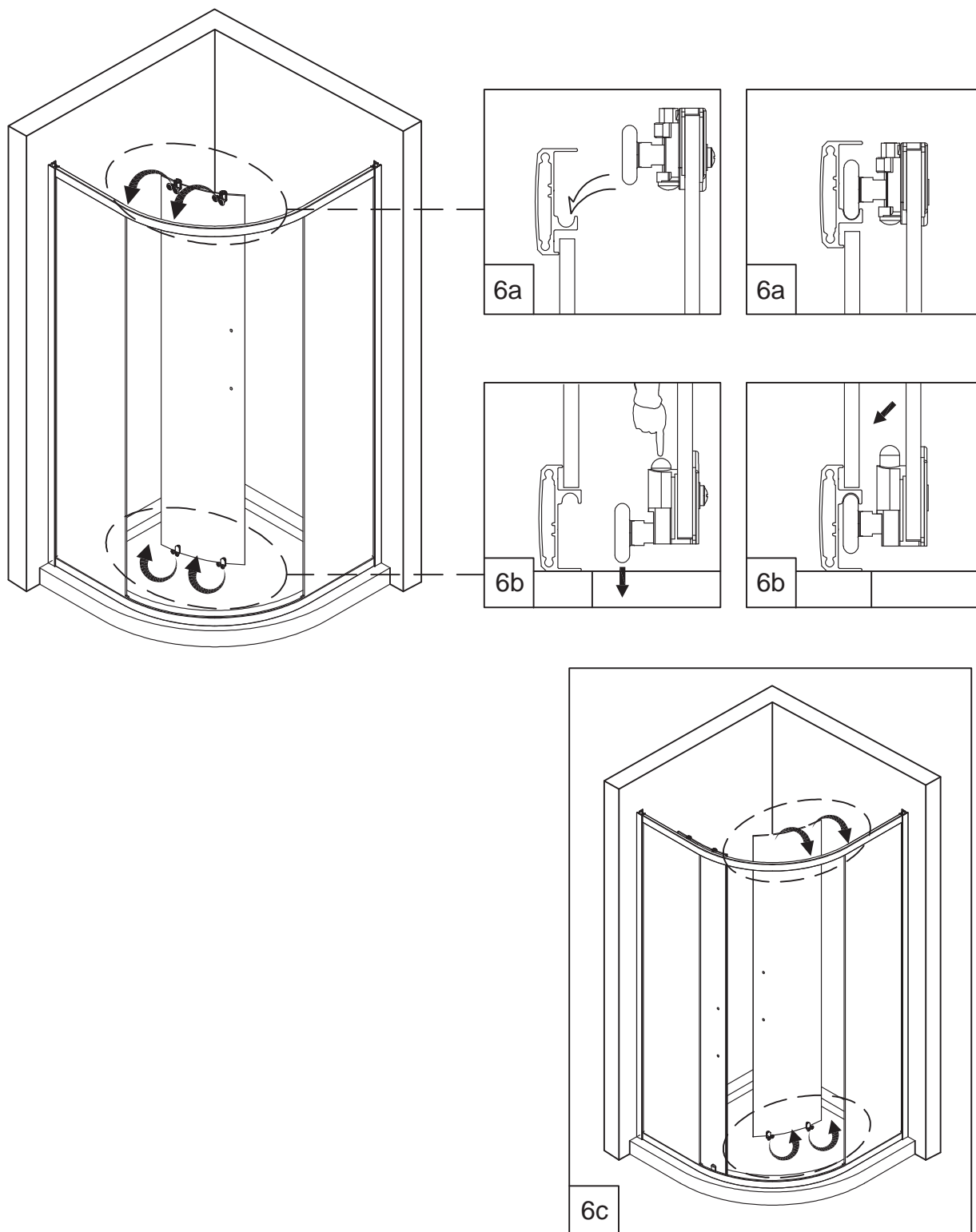
5a



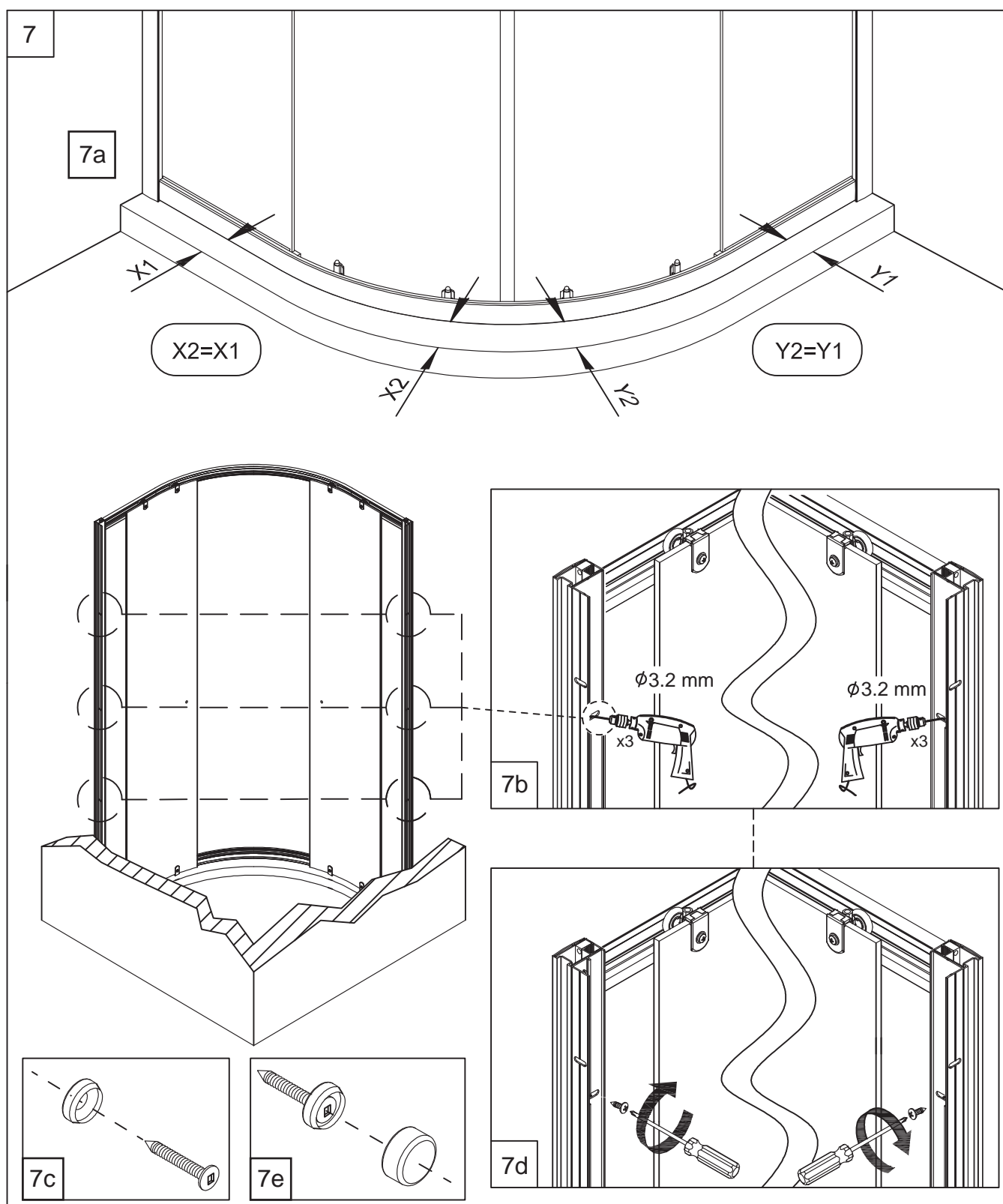
- (a) Assemble the rollers onto the door panels.

NOTE: The rollers are specific to the top of bottom of the glass.
The bottom rollers can be identified by the spring button (quick release function).

6

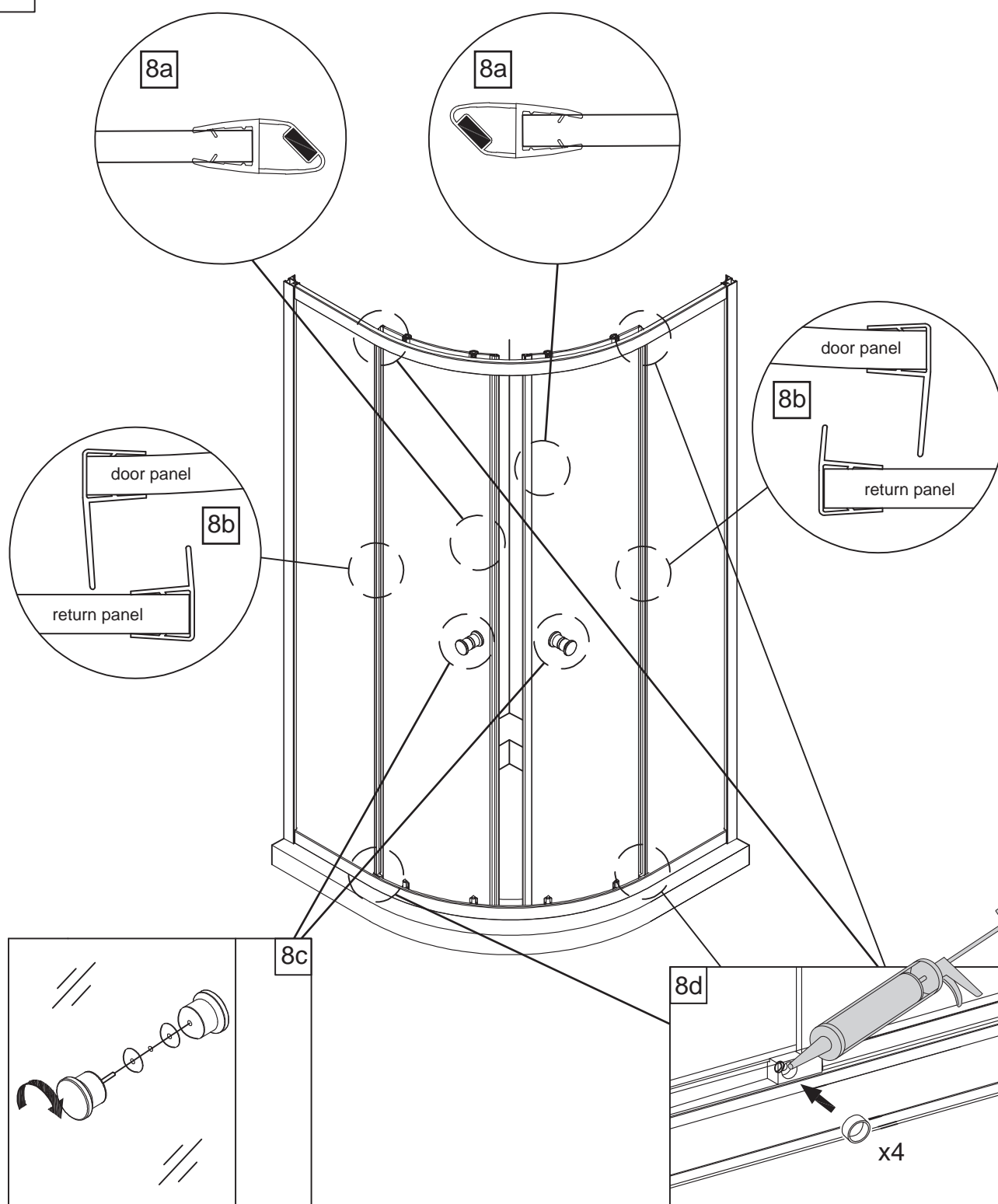


- (a)** Lift the door panel up and insert the top rollers into the rail.
- (b)** Press the spring button on the lower roller and push the lower rollers into the rail.
- (c)** Repeat for the other door panel.

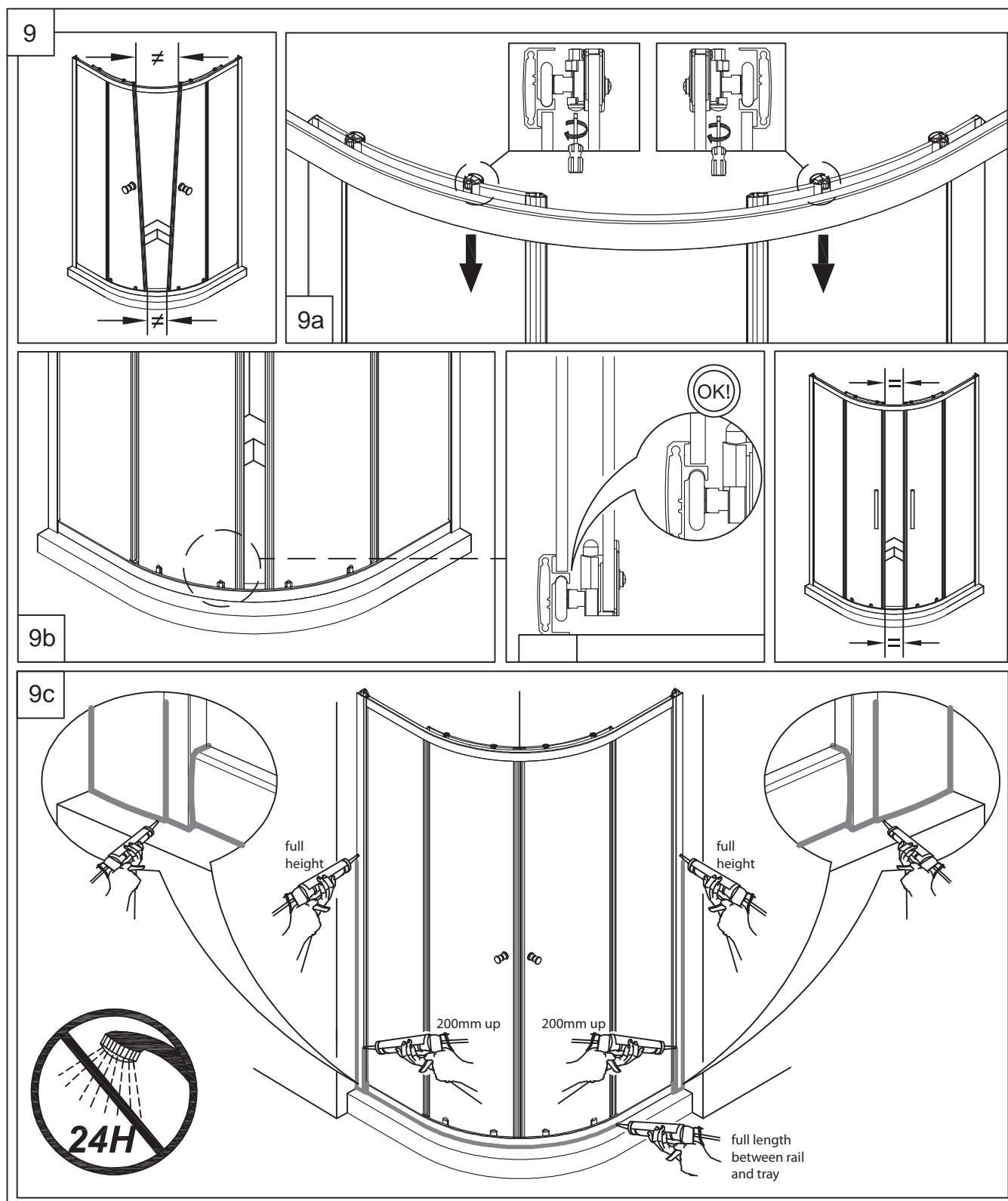


- (a) Ensure that the gap between frame and edge of tray is even all the way around.
- (b) From the inside of the enclosure, drill through the wall channel into the door frame. Be careful not to pierce all the way through or damage any other components.
- (c) Place a screw washer over the assembly screw.
- (d) Insert screw with washer into hole and tighten. Repeat for all 6 assembly screws.
- (e) Place the screw cover caps on.

8



- (a)** Install the magnetic door seals, ensuring the angled faces are aligned.
- (b)** Install the vertical seals, ensuring that the longer fin profile goes onto the door.
- (c)** Install the door handles, twisting clockwise to tighten.
- (d)** Apply silicone to the caps and install into the glass clips x4 places at the top and bottom of return panels.

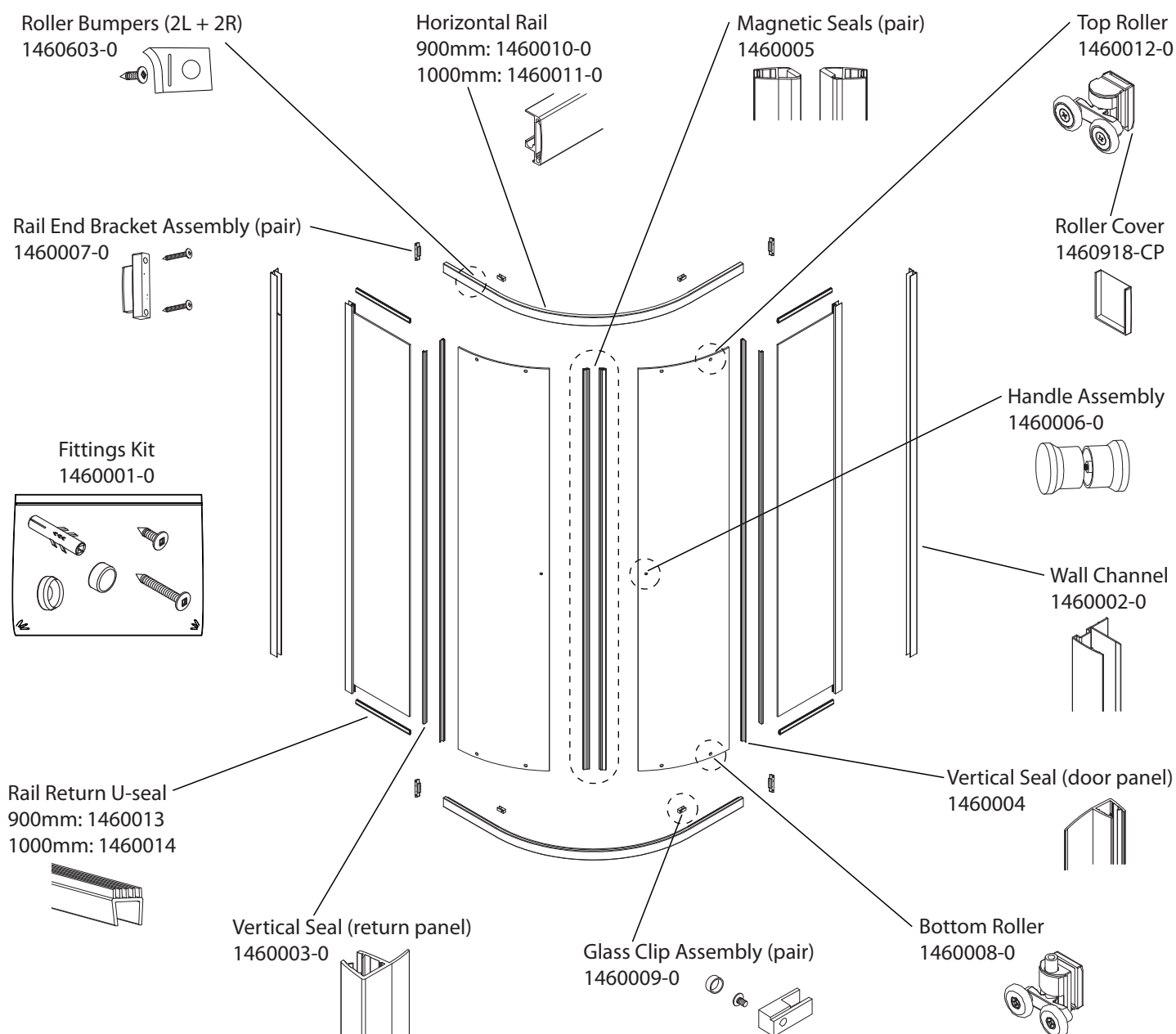


- (a) Check the operation of the doors. If the doors aren't even they can be adjusted via the top rollers. Use a screwdriver to wind the adjustment up or down per roller.
- (b) Once the doors are meeting evenly, evenly adjust the top rollers to set the correct amount of tension in the bottom rollers and so that the doors slide smoothly.
- (c) Apply sealant along the outside surfaces of the enclosure. Do not seal from inside. Allow the silicone sealant to cure for 24 hours before use. **Installation complete.**

CLEANING AND MAINTENANCE INSTRUCTIONS

Please refer to the homeowners guide and our website for cleaning instructions.

SPARE PARTS



CONTACT AND WARRANTY INFORMATION

NEW ZEALAND KOHLER NZ LTD

Free Ph: 0800 100 382
Free Fax: 0800 664 488
www.Englefield.co.nz

AUSTRALIA KOHLER AUSTRALIA

Free Ph: 1 800 ENGLEFIELD
(1 800 364 533)
www.Englefield.com



For warranty information, please visit our website.

Trusted in New Zealand Since 1982